



Project Update

Time Critical Removal Action (TCRA)

*Rocket Ridge Area of Open Demolition
Area #2 (ODA2)*

Ravenna RAB Presentation

November 17, 2010

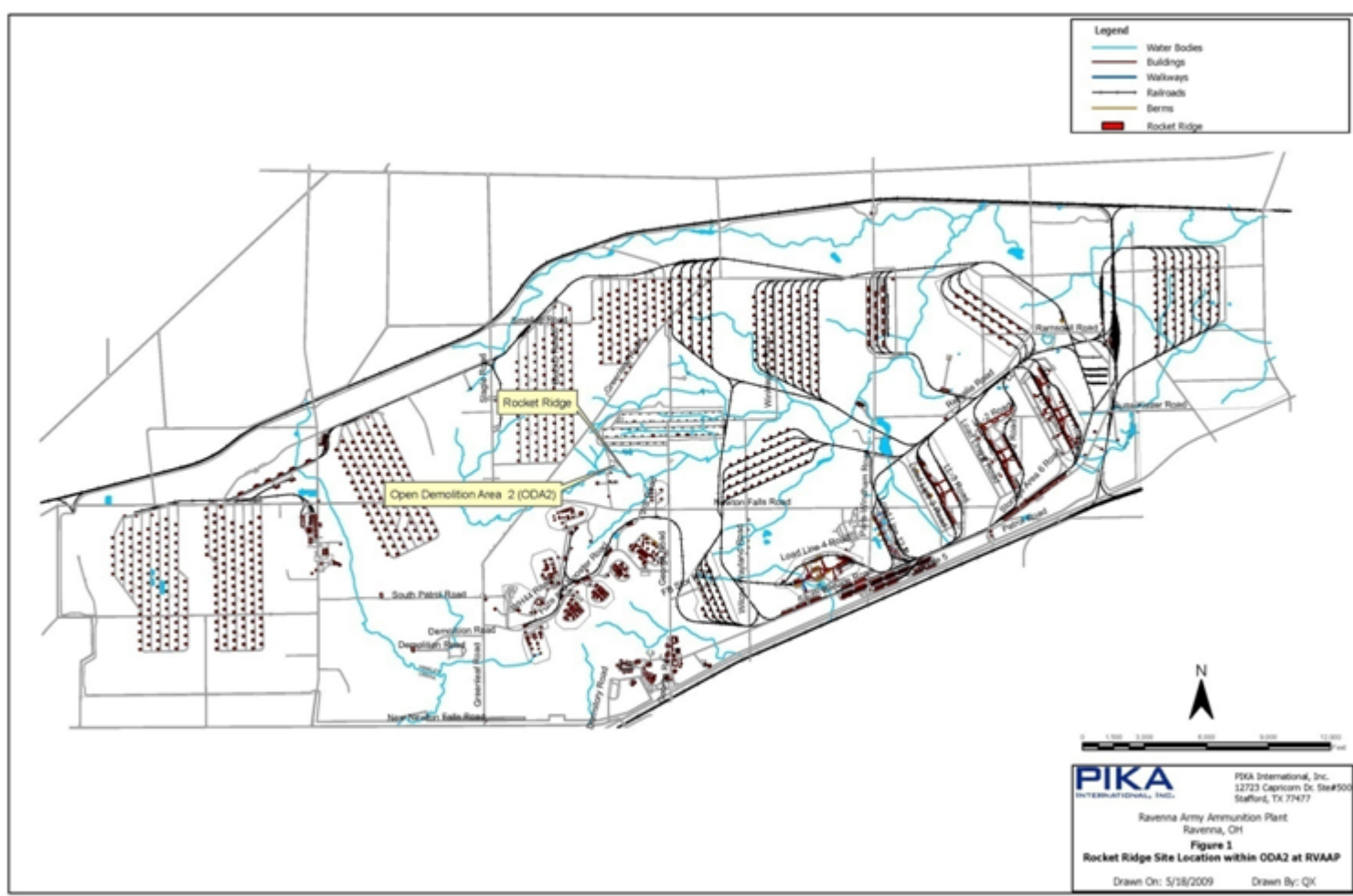


Site Description

- Rocket Ridge is a steep embankment along Sand Creek within Open Demolition Area #2 (ODA2) .
- ODA2 was used for detonation of munitions for demilitarization purposes.
- Rocket Ridge slope was used for disposal of the demilitarized munitions at ODA2; although not all munitions appear to have been completely demilitarized.
- Rocket Ridge was used during late 1940's to early 1950's.



Site Location Within the RVAAP





Rocket Ridge Site Location





View of Rocket Ridge Site



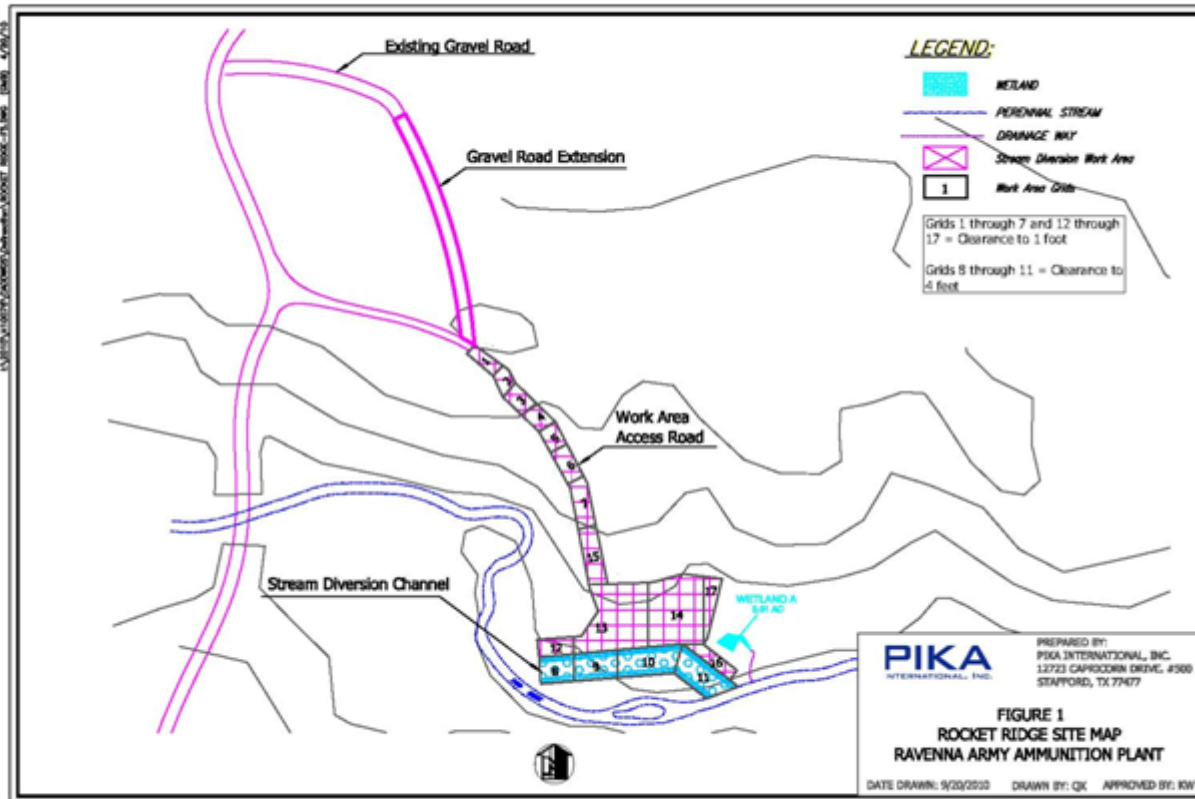


Objectives of 2010 TCRA

- Remove all Munitions and Explosives of Concern (MEC) and Munitions Debris (MD).
- Remove all white phosphorus contaminated materials.
- Collect confirmation soil samples to verify removal.
- Restore the site.
- Prepare Removal Action Report (RAR) to describe in detail the actions taken to remove the MEC, MD and white phosphorus contamination at the site.



Current Site Operations: MEC Clearance for Creek Diversion





MEC Clearance Within Stream Diversion Work Area



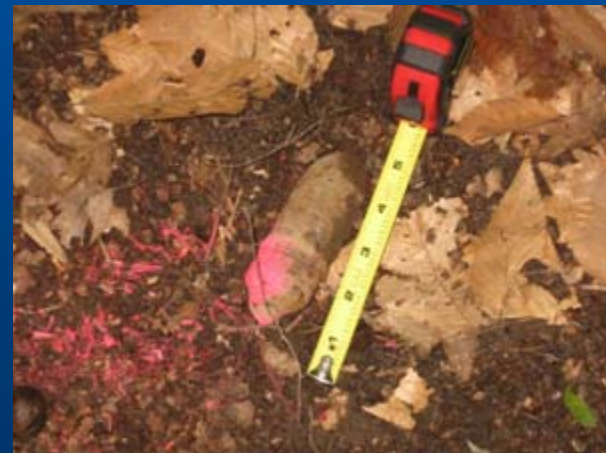


MEC Clearance Within Access Roadway





Recovered Items





Summary of Items Recovered

- 5,000 pounds of munitions debris (scrap metal)
- Projectiles (20 mm, 37 mm, 75 mm, 90 mm)
- Grenade fuzes
- Booster cups
- Burster tubes
- 170 MEC items total



Projected Schedule for Remaining Tasks

- Divert Sand Creek. November 22 through December 17, 2010.
- Excavate/remove all material from main dump area. December through February 2010.
- Process excavated material through ferrous and non-ferrous separator to remove munitions related items. February 2010.
- Remove, containerize and stage white phosphorus contaminated material. February – April 2010
- Confirmation sampling. April - May 2010.
- Munitions and munitions debris survey of Sand Creek. April – May 2010.
- Site Restoration. May – June 2011.



Rocket Ridge 2010 TCRA

- QUESTIONS?