

APPENDIX I

POTENTIOMETRIC MAPS AND HYDROGRAPHS

**FINAL REPORT
GROUNDWATER INVESTIGATION
RAMSDELL QUARRY LANDFILL
RAVENNA ARMY AMMUNITION PLANT**

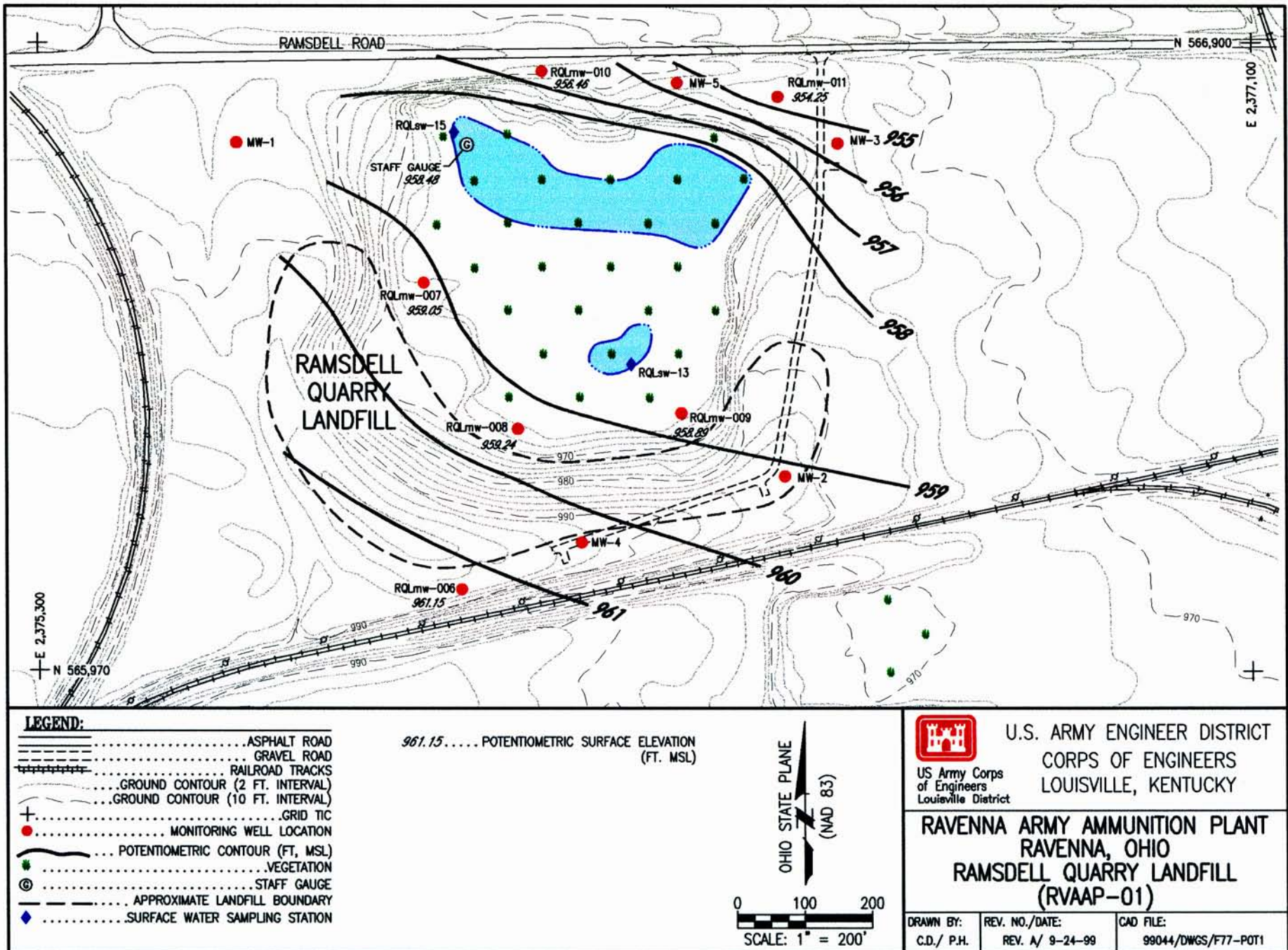
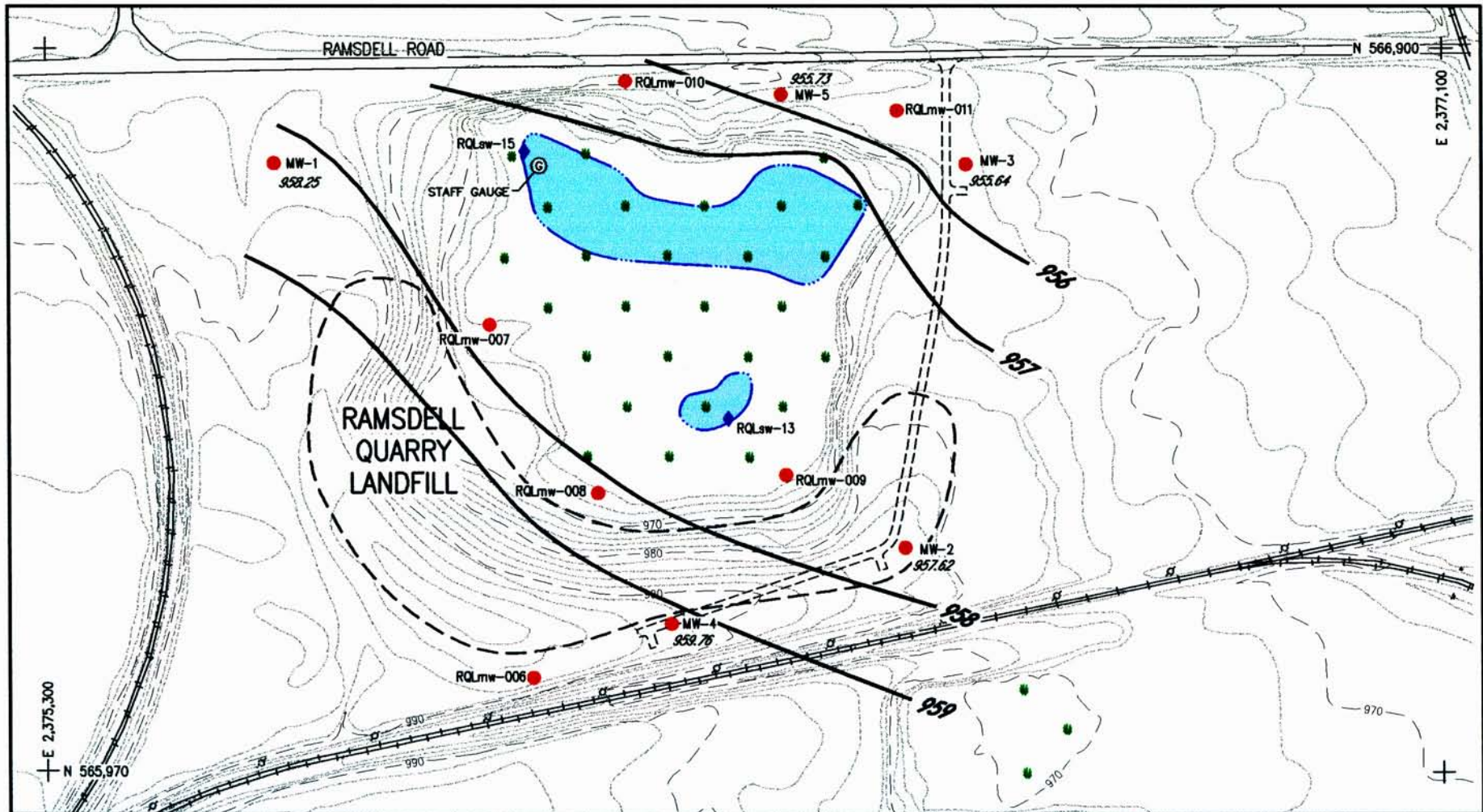


Figure I-1. RQL Groundwater Potentiometric Surface in New Wells During the Initial Phase Sampling Event (July 23-28, 1998).

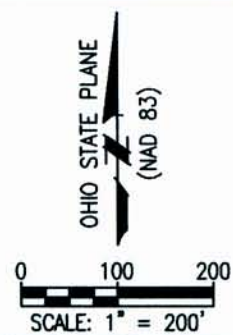


I-4

LEGEND:

- ASPHALT ROAD
- GRAVEL ROAD
- RAILROAD TRACKS
- GROUND CONTOUR (2 FT. INTERVAL)
- GROUND CONTOUR (10 FT. INTERVAL)
- + GRID TIC
- MONITORING WELL LOCATION
- POTENTIOMETRIC CONTOUR (FT, MSL)
- VEGETATION
- ⊙ STAFF GAUGE
- APPROXIMATE LANDFILL BOUNDARY
- ◆ SURFACE WATER SAMPLING STATION

959.76 POTENTIOMETRIC SURFACE ELEVATION (FT MSL)



 US Army Corps of Engineers Louisville District	U.S. ARMY ENGINEER DISTRICT CORPS OF ENGINEERS LOUISVILLE, KENTUCKY	
	RAVENNA ARMY AMMUNITION PLANT RAVENNA, OHIO RAMSDELL QUARRY LANDFILL (RVAAP-01)	
DRAWN BY: C.D./ P.H.	REV. NO./DATE: REV. A/ 9-24-99	CAD FILE: 99044/DWGS/F77-POT2

Figure I-2. RQL Groundwater Potentiometric Surface in Existing Wells During the Initial Phase Sampling Event (July 23-28, 1998).

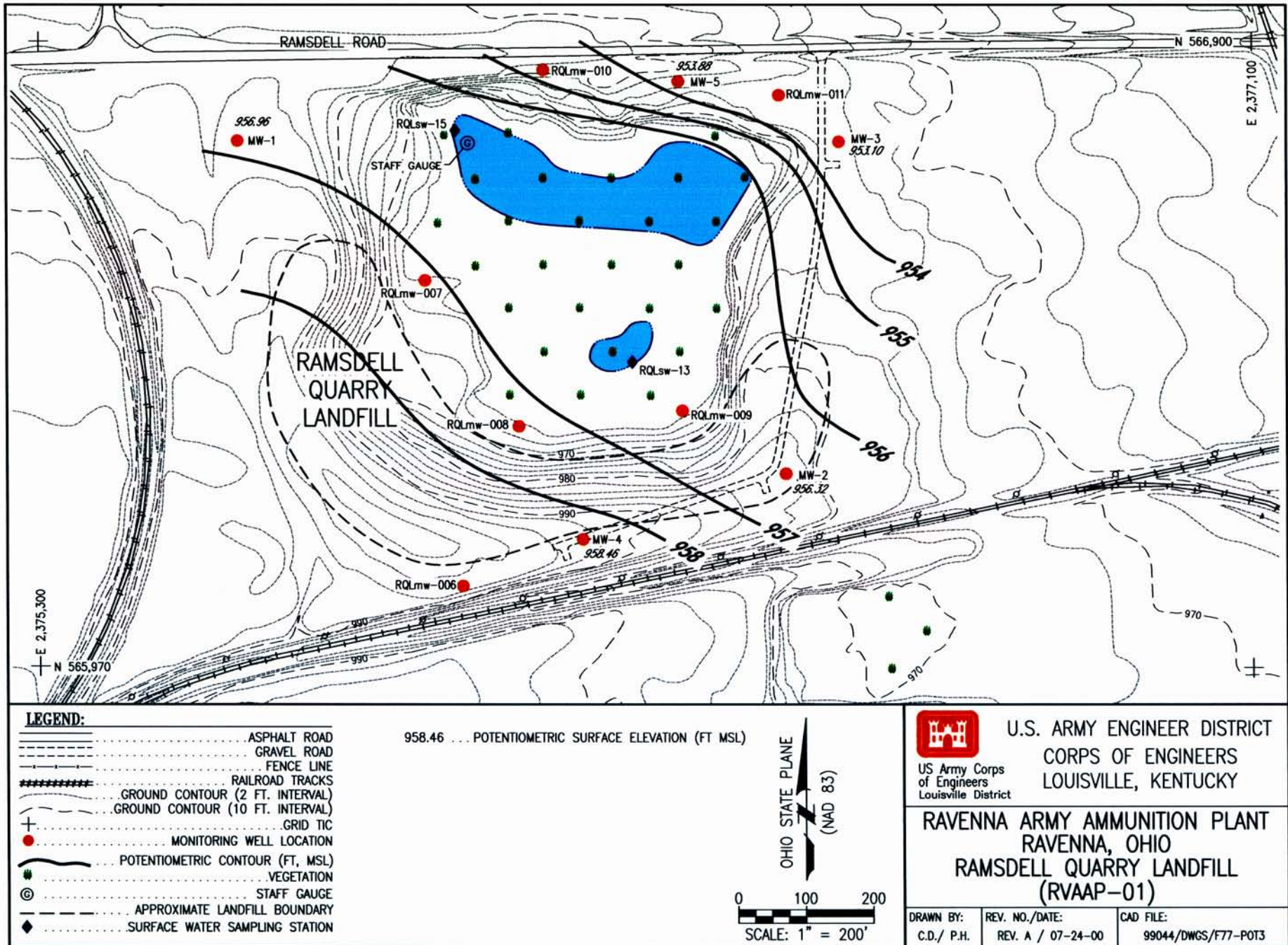


Figure I-3. RQL Groundwater Potentiometric Surface in Existing Wells During the Dry Season Sampling Event (September 18, 1998).

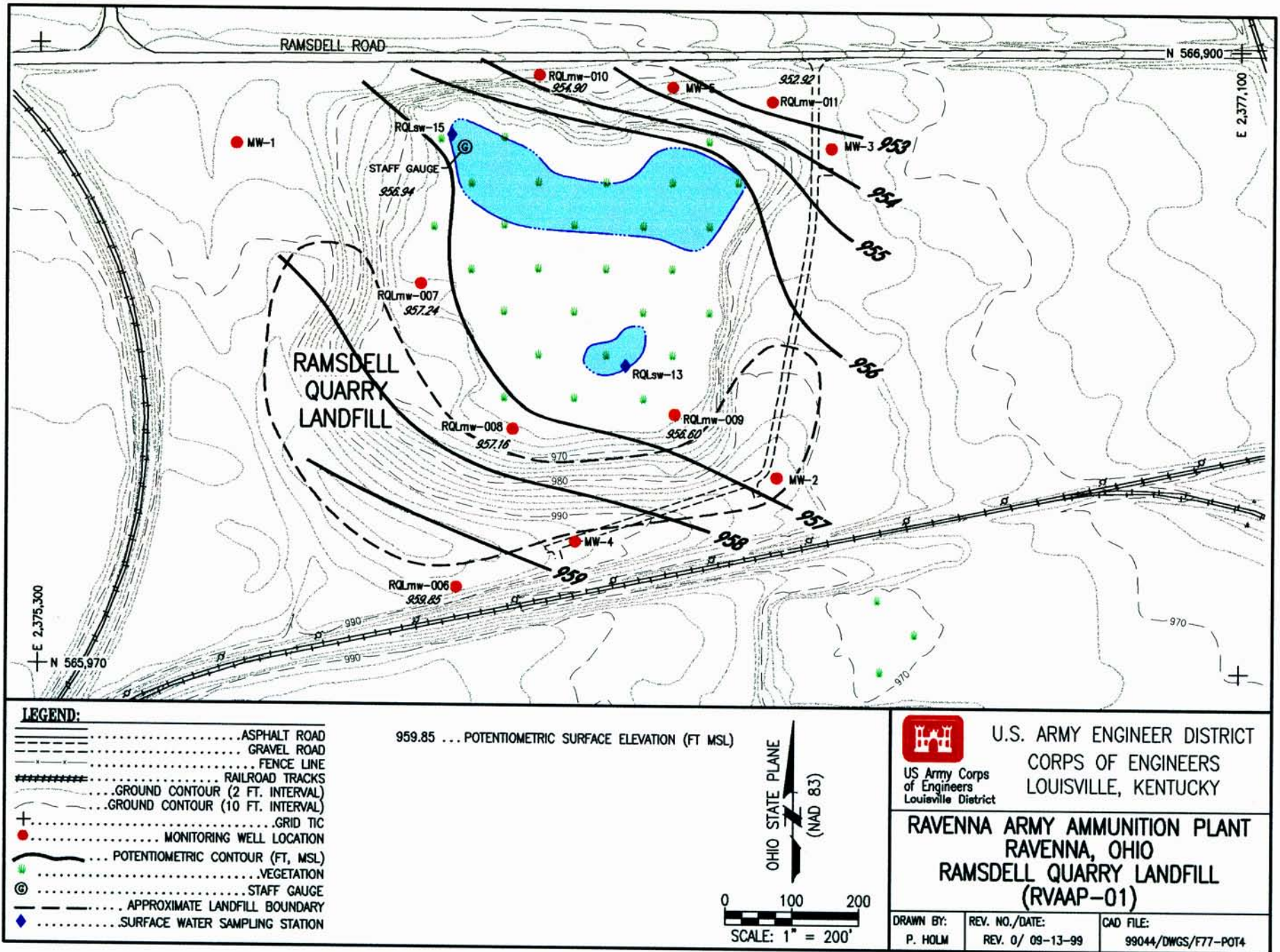
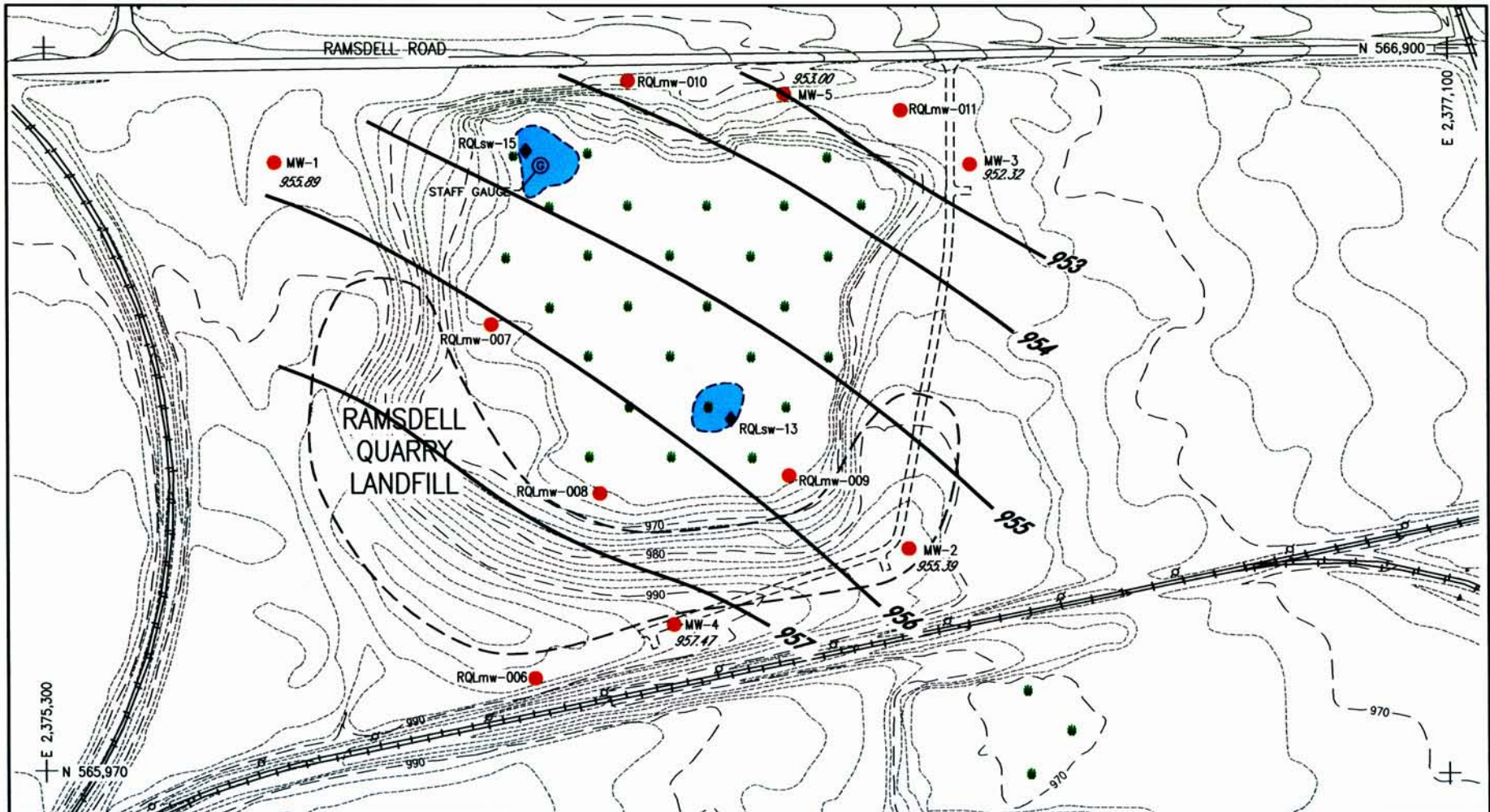


Figure I-4. RQL Groundwater Potentiometric Surface in New Wells During the Dry Season Sampling Event (September 18, 1998).

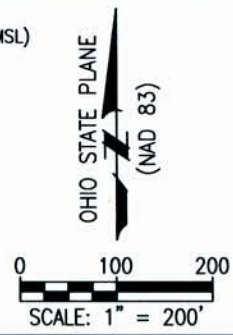


I-7

LEGEND:

- ASPHALT ROAD
- GRAVEL ROAD
- FENCE LINE
- ##### RAILROAD TRACKS
- GROUND CONTOUR (2 FT. INTERVAL)
- GROUND CONTOUR (10 FT. INTERVAL)
- GRID TIC
- MONITORING WELL LOCATION
- POTENTIOMETRIC CONTOUR (FT, MSL)
- VEGETATION
- ⊙ STAFF GAUGE
- APPROXIMATE LANDFILL BOUNDARY
- ◆ SURFACE WATER SAMPLING STATION

957.47 ... POTENTIOMETRIC SURFACE ELEVATION (FT MSL)



 U.S. Army Corps of Engineers Louisville District	U.S. ARMY ENGINEER DISTRICT CORPS OF ENGINEERS LOUISVILLE, KENTUCKY	
	RAVENNA ARMY AMMUNITION PLANT RAVENNA, OHIO RAMSDELL QUARRY LANDFILL (RVAAP-01)	
DRAWN BY: P. H. / C. D.	REV. NO./DATE: REV. B / 07-24-00	CAD FILE: 99044/DWGS/F77-POT5

Figure I-5. RQL Groundwater Potentiometric Surface in Existing Wells During the Second Quarter Sampling Event (October 19, 1998).

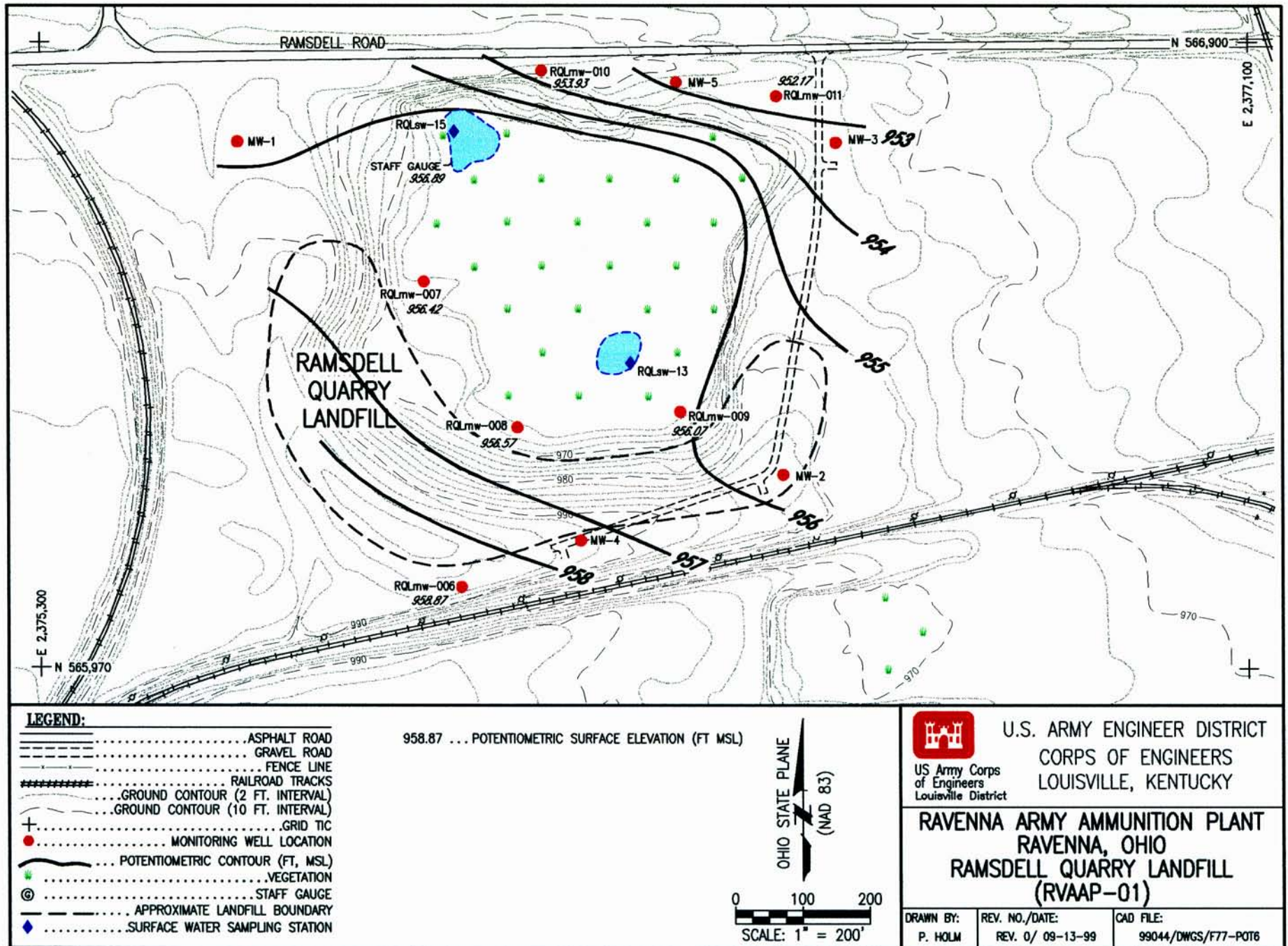


Figure I-6. RQL Groundwater Potentiometric Surface in New Wells During the Second Quarter Sampling Event (October 19, 1998).

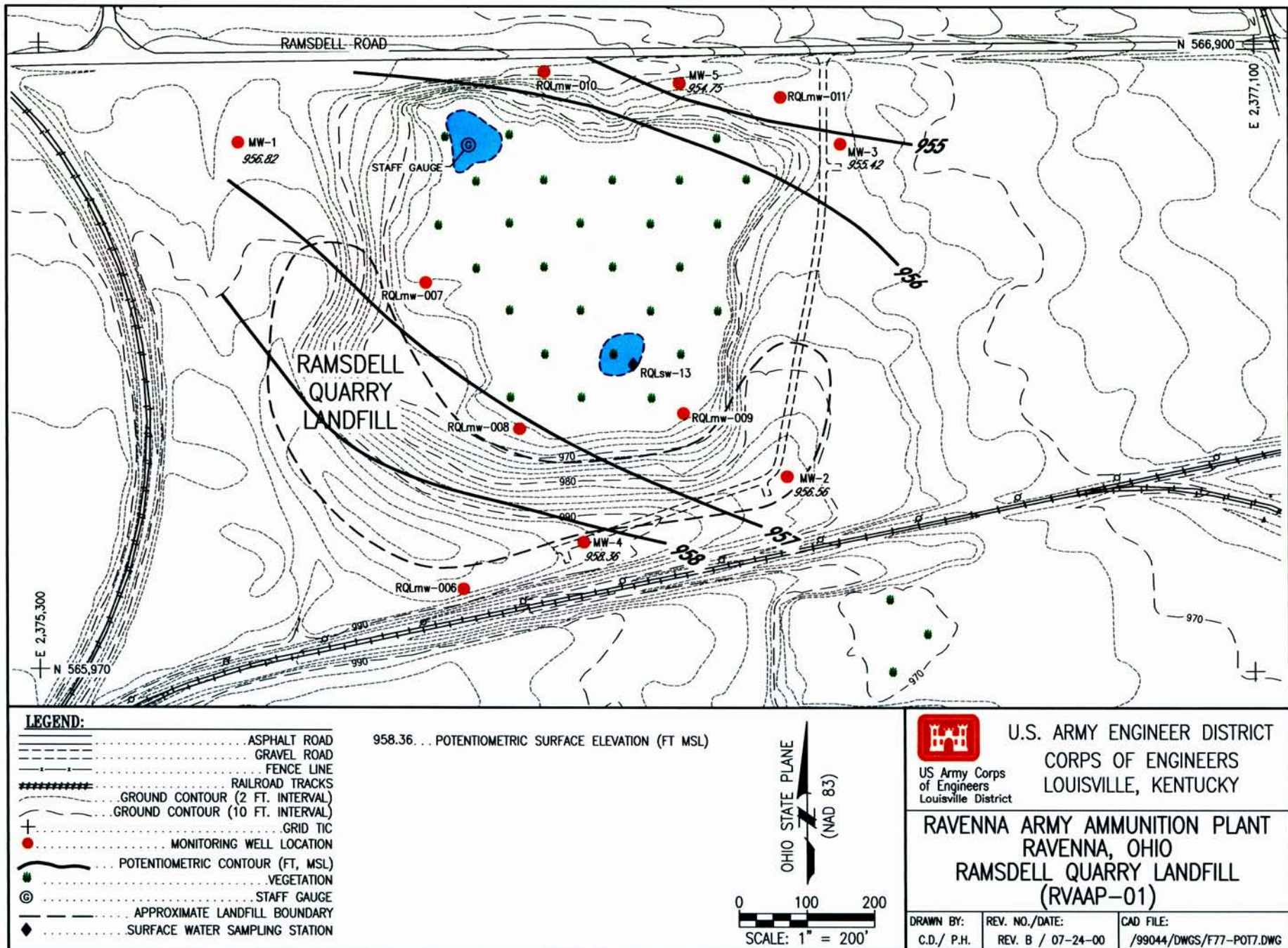
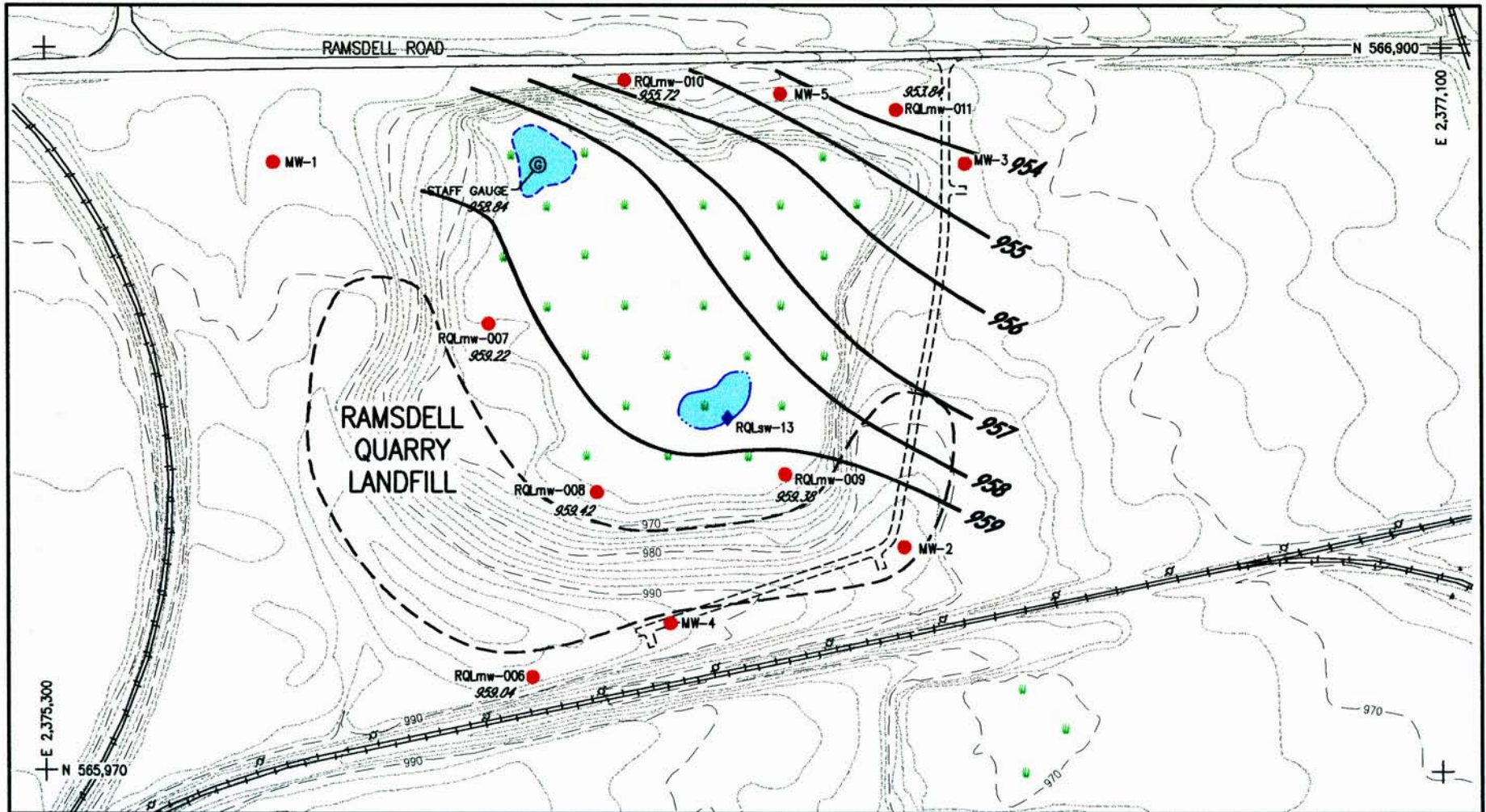


Figure I-7. RQL Groundwater Potentiometric Surface in Existing Wells During the February Quarterly Sampling Event (February 12, 1999).

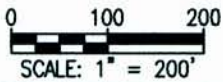
01-1




LEGEND:

- ASPHALT ROAD
- GRAVEL ROAD
- FENCE LINE
- RAILROAD TRACKS
- GROUND CONTOUR (2 FT. INTERVAL)
- GROUND CONTOUR (10 FT. INTERVAL)
- GRID TIC
- MONITORING WELL LOCATION
- POTENTIOMETRIC CONTOUR (FT, MSL)
- VEGETATION
- STAFF GAUGE
- APPROXIMATE LANDFILL BOUNDARY
- SURFACE WATER SAMPLING STATION

959.04 ... POTENTIOMETRIC SURFACE ELEVATION (FT MSL)



 U.S. ARMY ENGINEER DISTRICT
CORPS OF ENGINEERS
LOUISVILLE, KENTUCKY
US Army Corps of Engineers
Louisville District

**RAVENNA ARMY AMMUNITION PLANT
RAVENNA, OHIO
RAMSDELL QUARRY LANDFILL
(RVAAP-01)**

DRAWN BY: C.D./ P.H.	REV. NO./DATE: REV. 0 / 9-10-99	CAD FILE: 99044/DWGS/F77-P078
-------------------------	------------------------------------	----------------------------------

Figure I-8. RQL Groundwater Potentiometric Surface in New Wells During the February Quarterly Sampling Event (February 12, 1999).

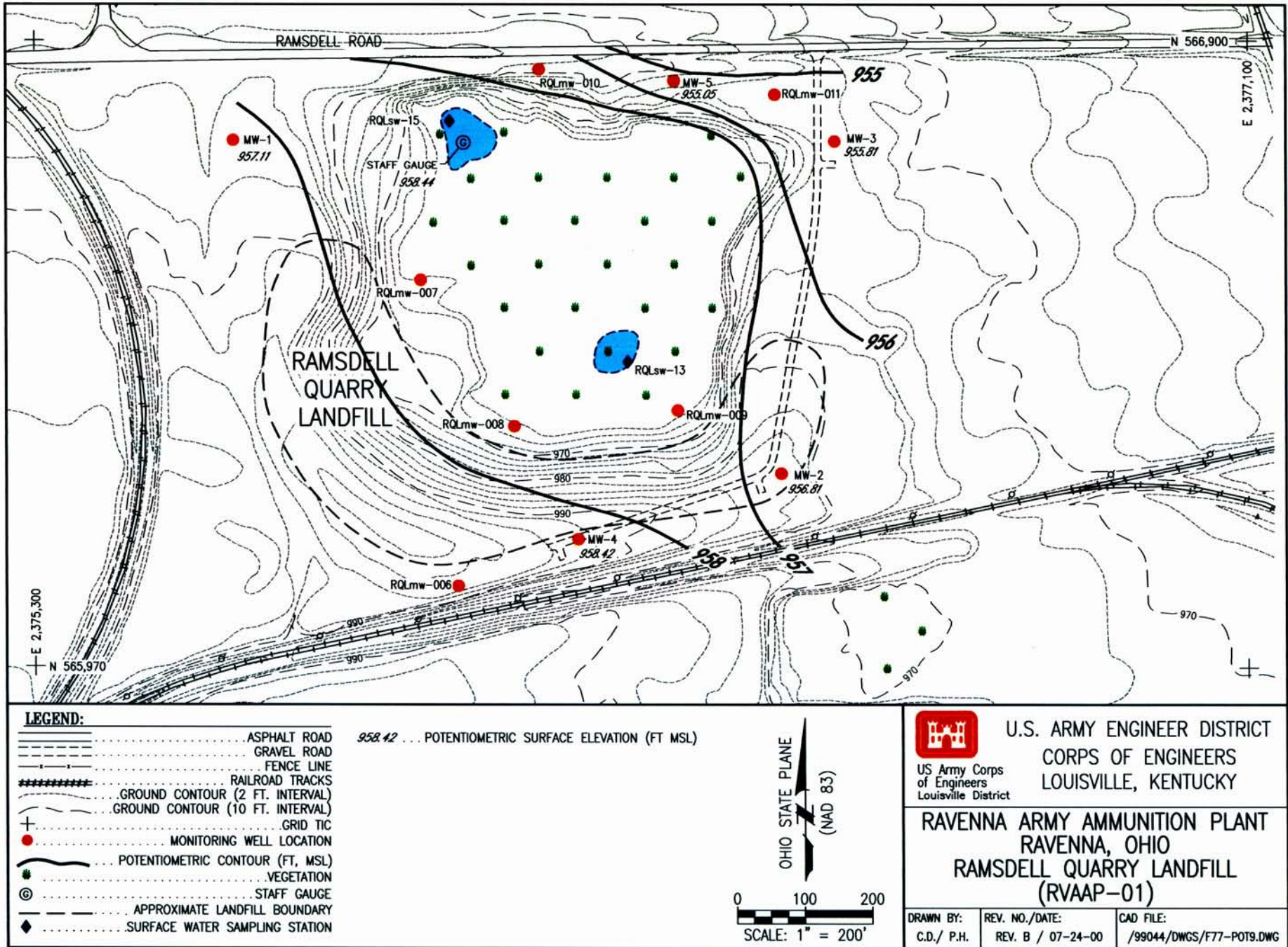


Figure I-9. RQL Groundwater Potentiometric Surface in Existing Wells During the April Quarterly Sampling Event (April 10, 1999).

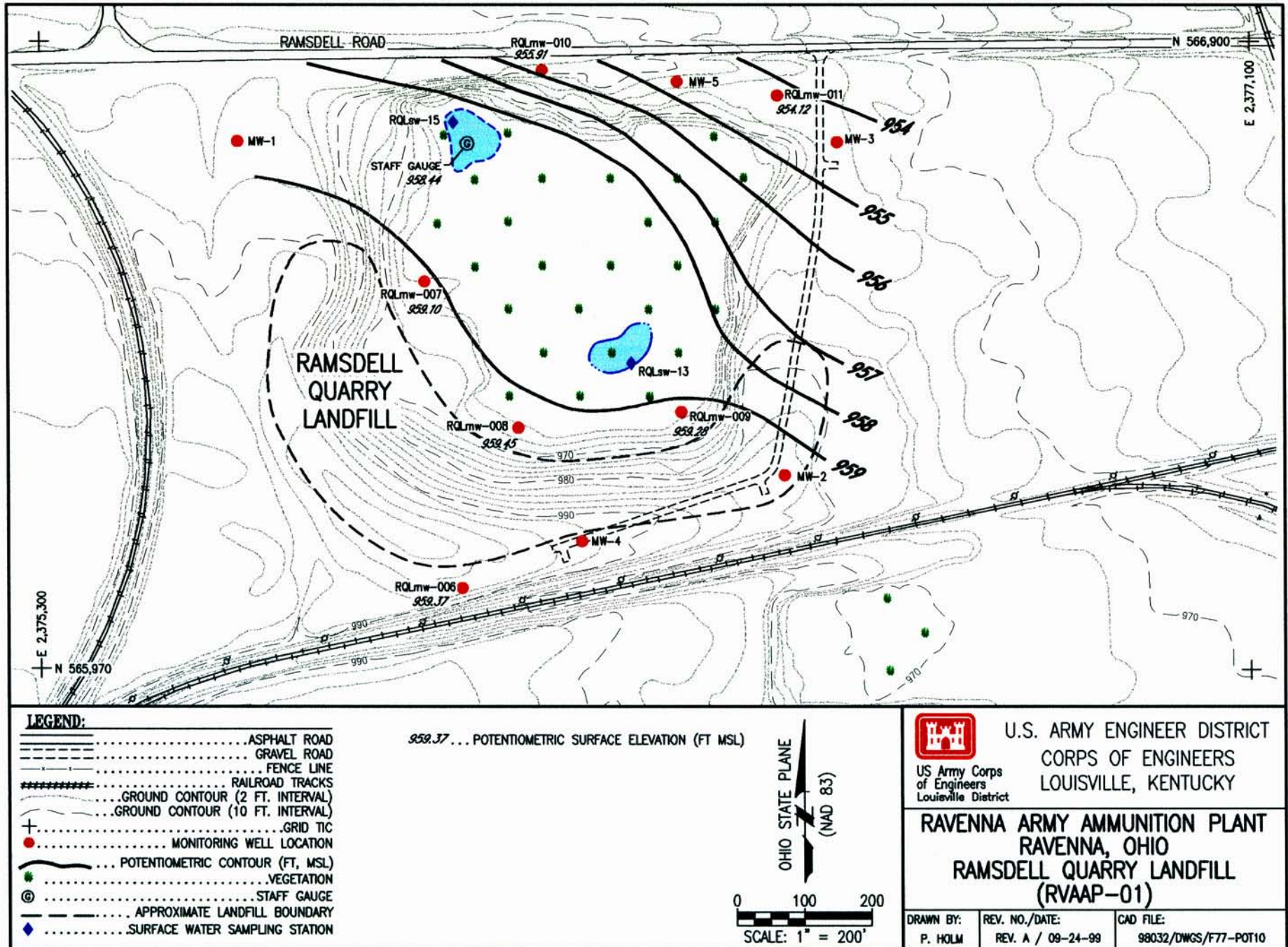


Figure I-10. RQL Groundwater Potentiometric Surface in New Wells During the April Quarterly Sampling Event (April 10, 1999).

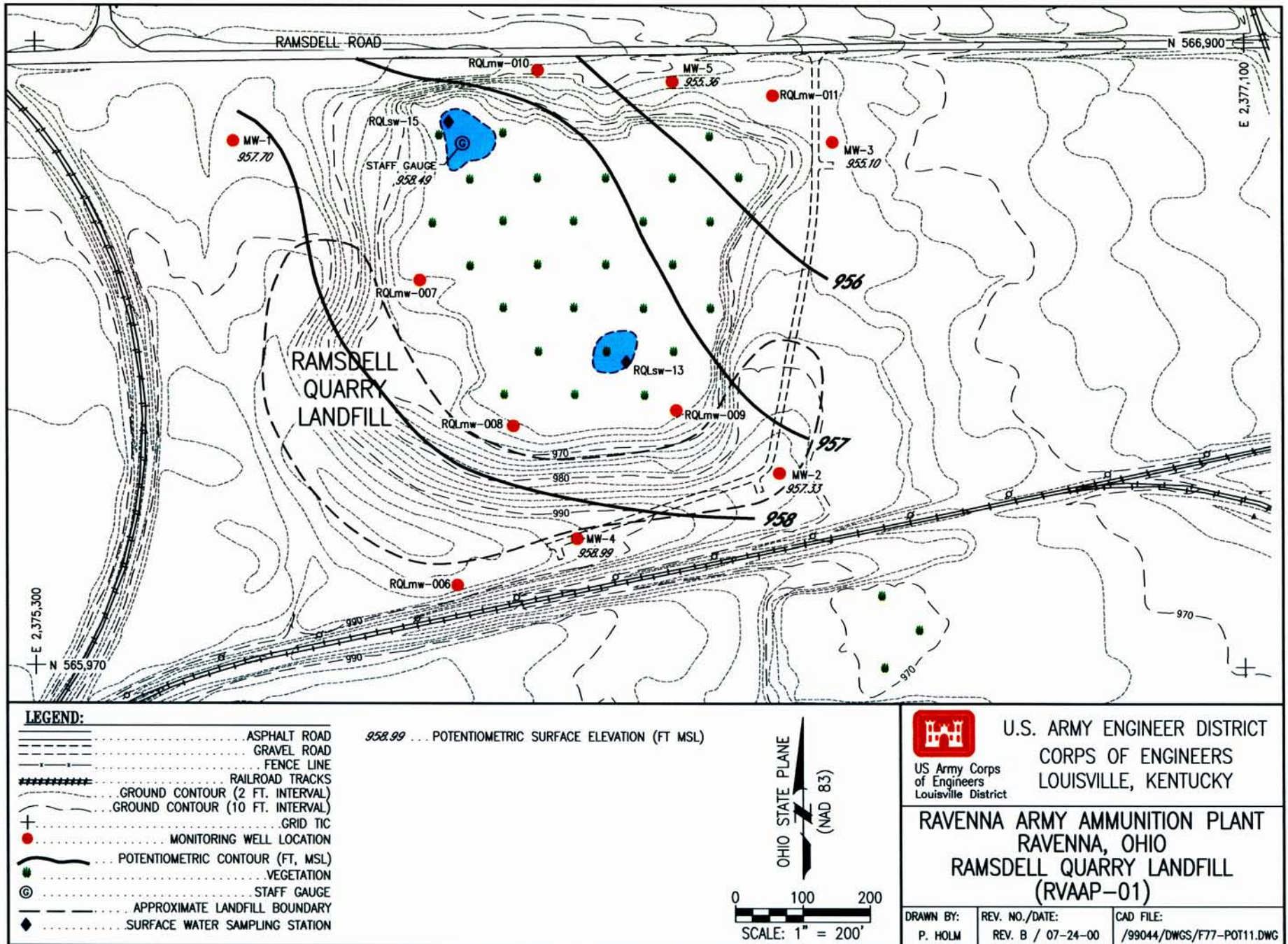
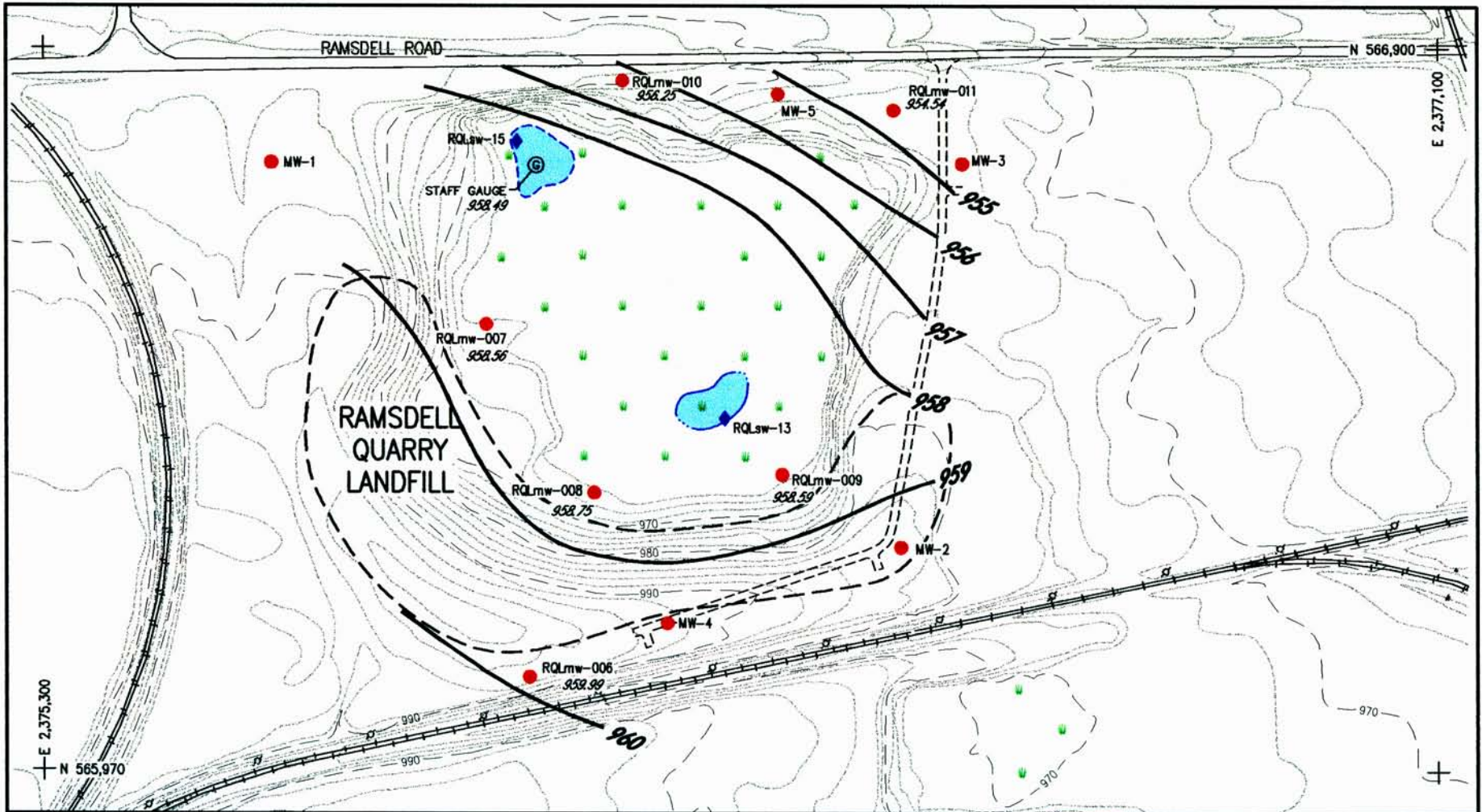


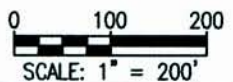
Figure I-11. RQL Groundwater Potentiometric Surface in Existing Wells (May 21, 1999).



LEGEND:

- ASPHALT ROAD
- GRAVEL ROAD
- FENCE LINE
- RAILROAD TRACKS
- GROUND CONTOUR (2 FT. INTERVAL)
- GROUND CONTOUR (10 FT. INTERVAL)
- GRID TIC
- MONITORING WELL LOCATION
- POTENTIOMETRIC CONTOUR (FT, MSL)
- VEGETATION
- STAFF GAUGE
- APPROXIMATE LANDFILL BOUNDARY
- SURFACE WATER SAMPLING STATION

598.75 ... POTENTIOMETRIC SURFACE ELEVATION (FT MSL)



<p>U.S. ARMY ENGINEER DISTRICT CORPS OF ENGINEERS LOUISVILLE, KENTUCKY</p>	<p>RAVENNA ARMY AMMUNITION PLANT RAVENNA, OHIO RAMSDELL QUARRY LANDFILL (RVAAP-01)</p>	
	DRAWN BY: P. HOLM	REV. NO./DATE: REV. 0 / 9-13-99

Figure I-12. RQL Groundwater Potentiometric Surface in New Wells (May 21, 1999).

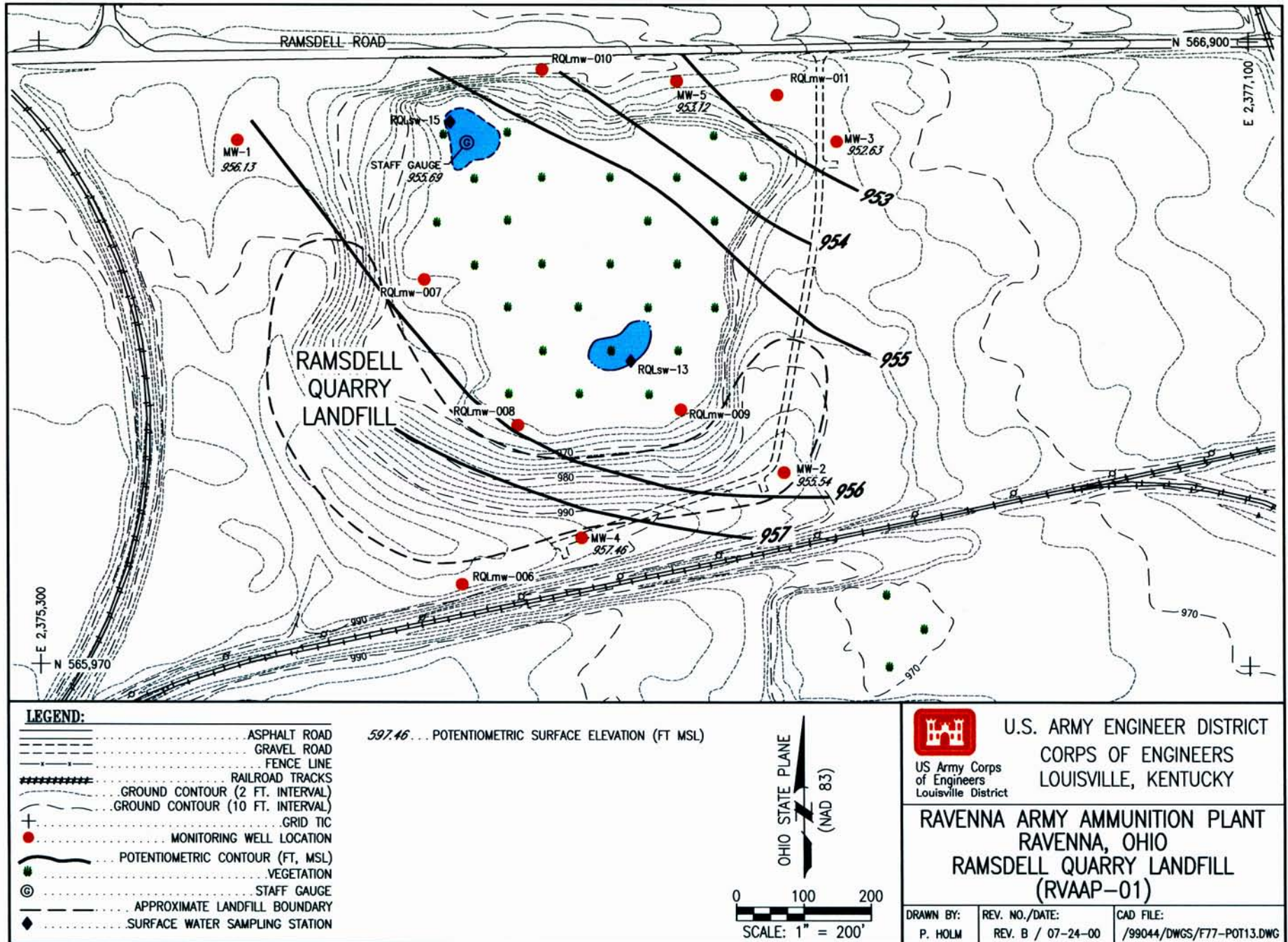


Figure I-13. RQL Groundwater Potentiometric Surface in Existing Wells (July 15, 1999).

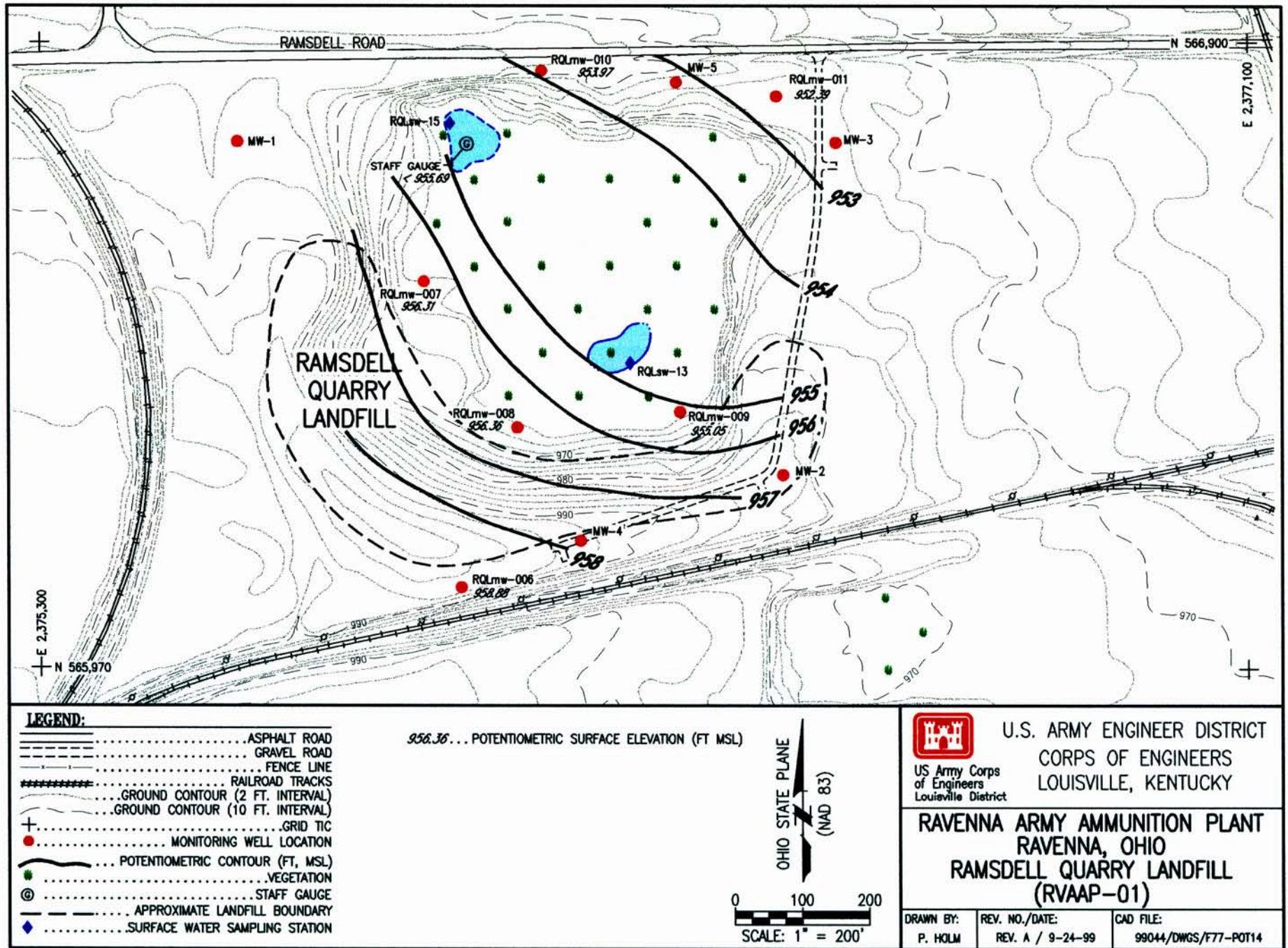
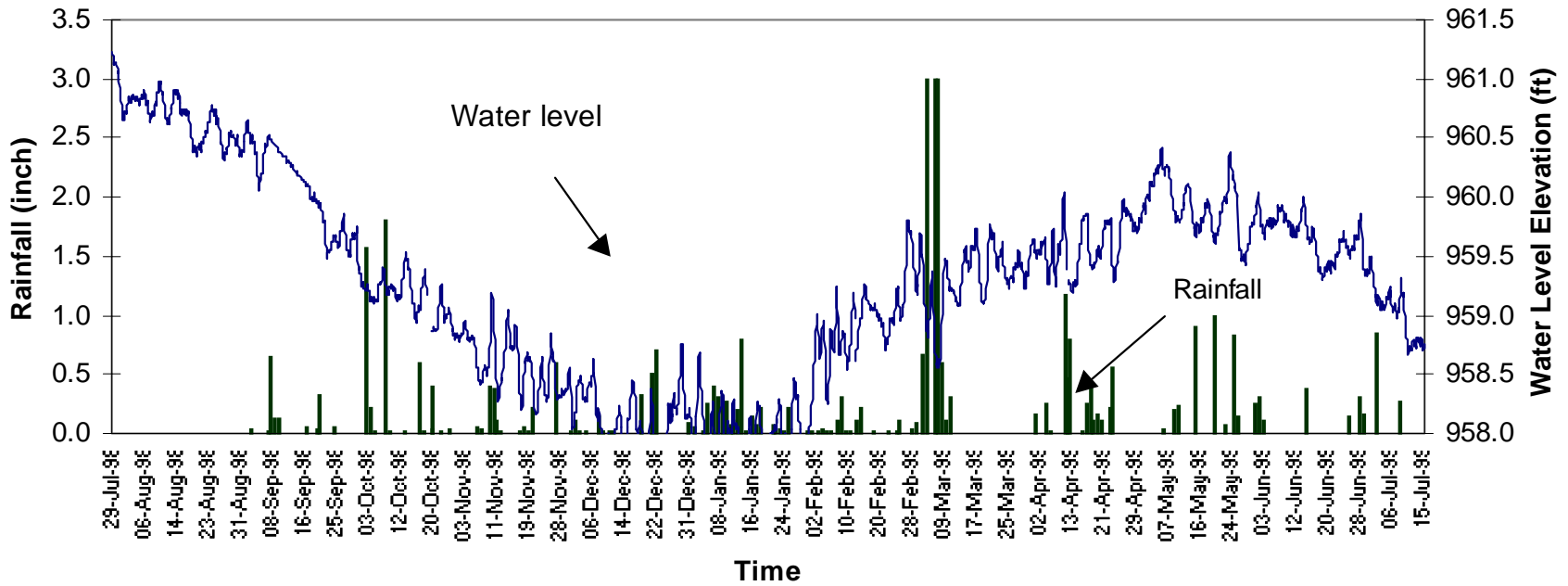
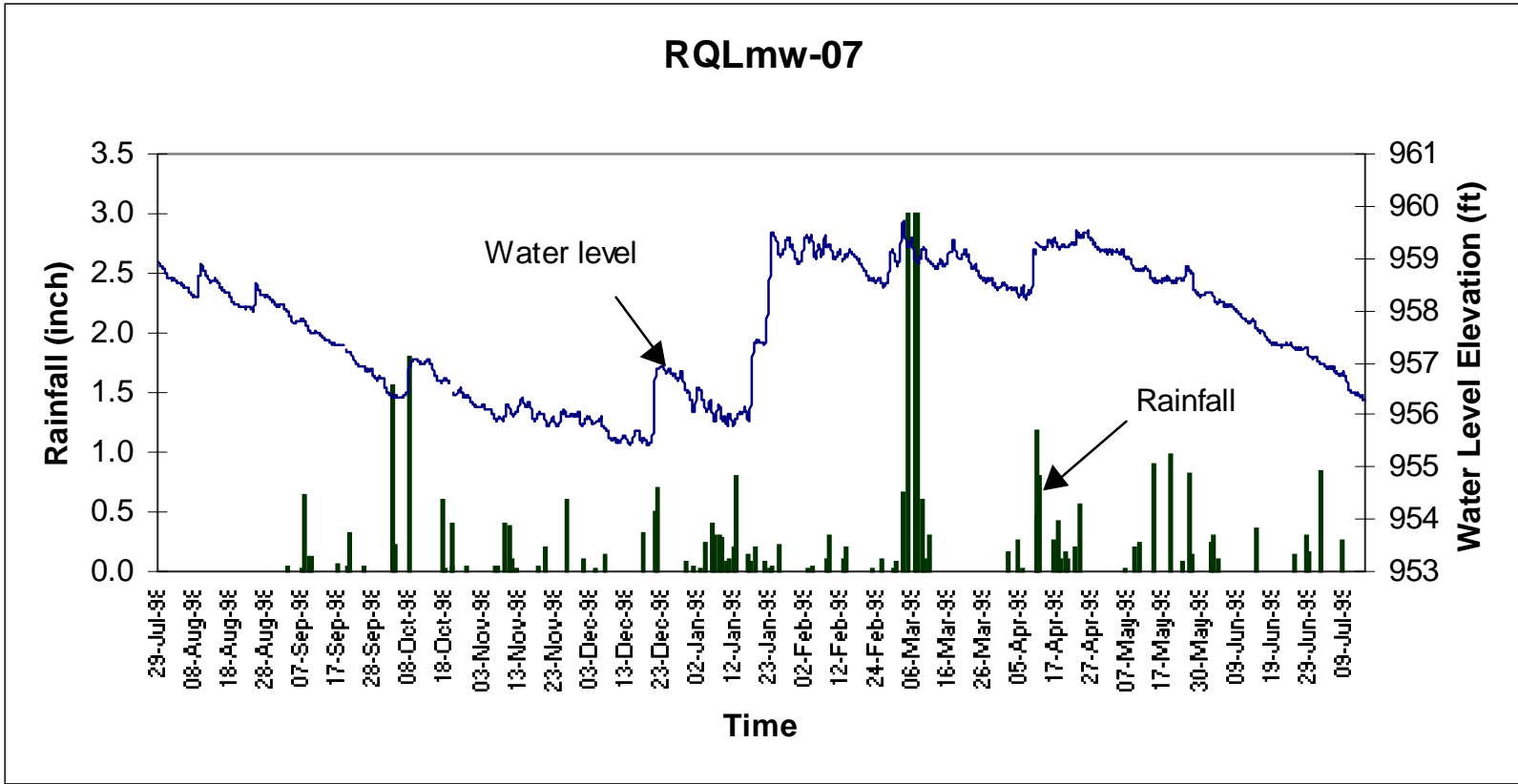
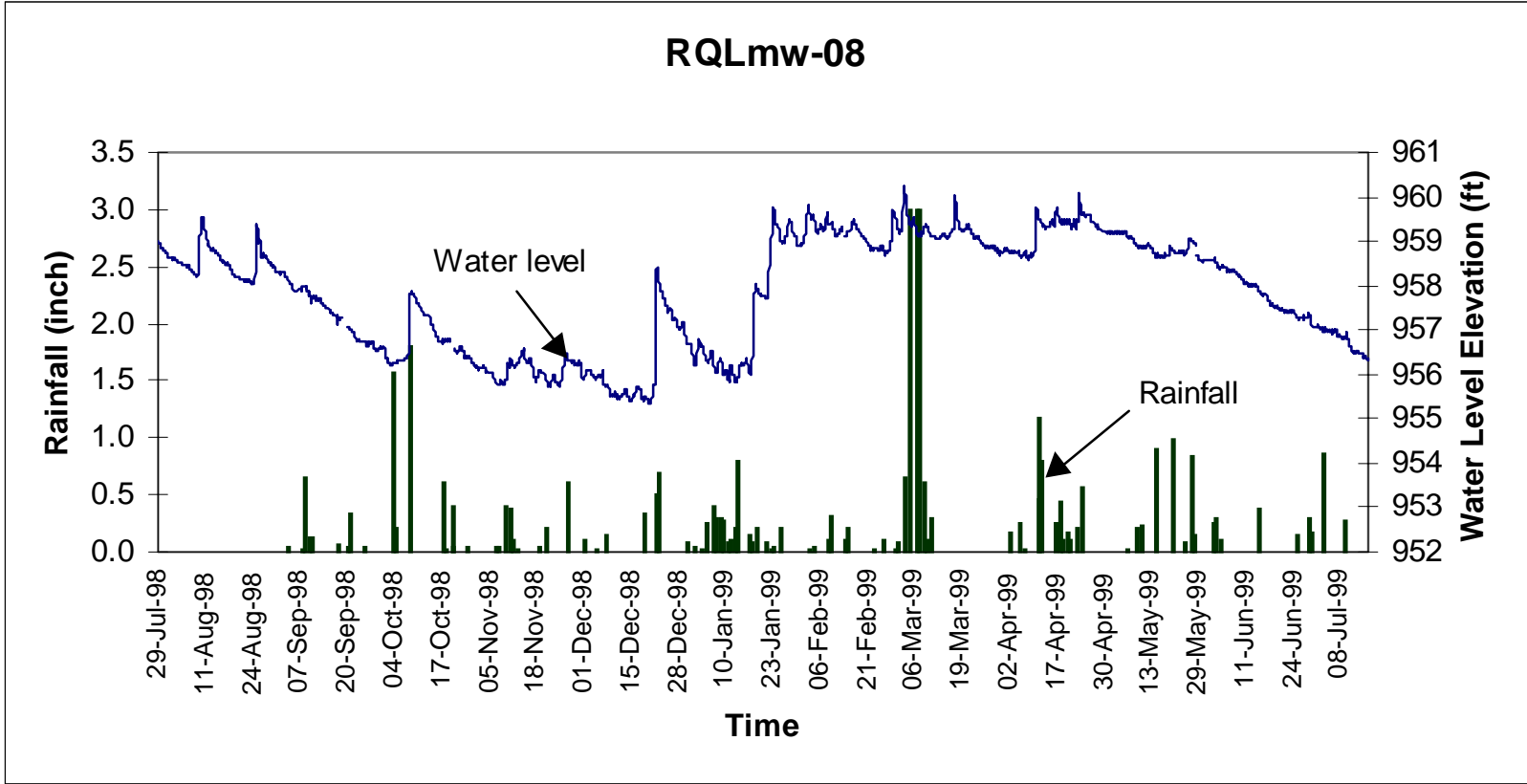


Figure I-14. RQL Groundwater Potentiometric Surface in New Wells (July 15, 1999).

RQLmw-06







RQLmw-09

