

2.0 PROJECT ORGANIZATION AND RESPONSIBILITIES

The NACA Test Area Phase I RI project organization and responsibilities are presented in [Figure 2-1](#). The functional responsibilities of key personnel are described in Chapter 2.0 of the facility-wide SAP and, therefore, are not presented here. Figure 2-1 shows the Project Organization Chart for the Phase I RI for the NACA Test Area.

[Figure 2-2](#) presents the project schedule for the Phase I RI. The schedule projects a mid-October 1999 start date for field activities. This scenario reflects a small extension of the field investigation time frame because sampling must be suspended during public hunting days (Saturdays only), which will occur during the planned activities.

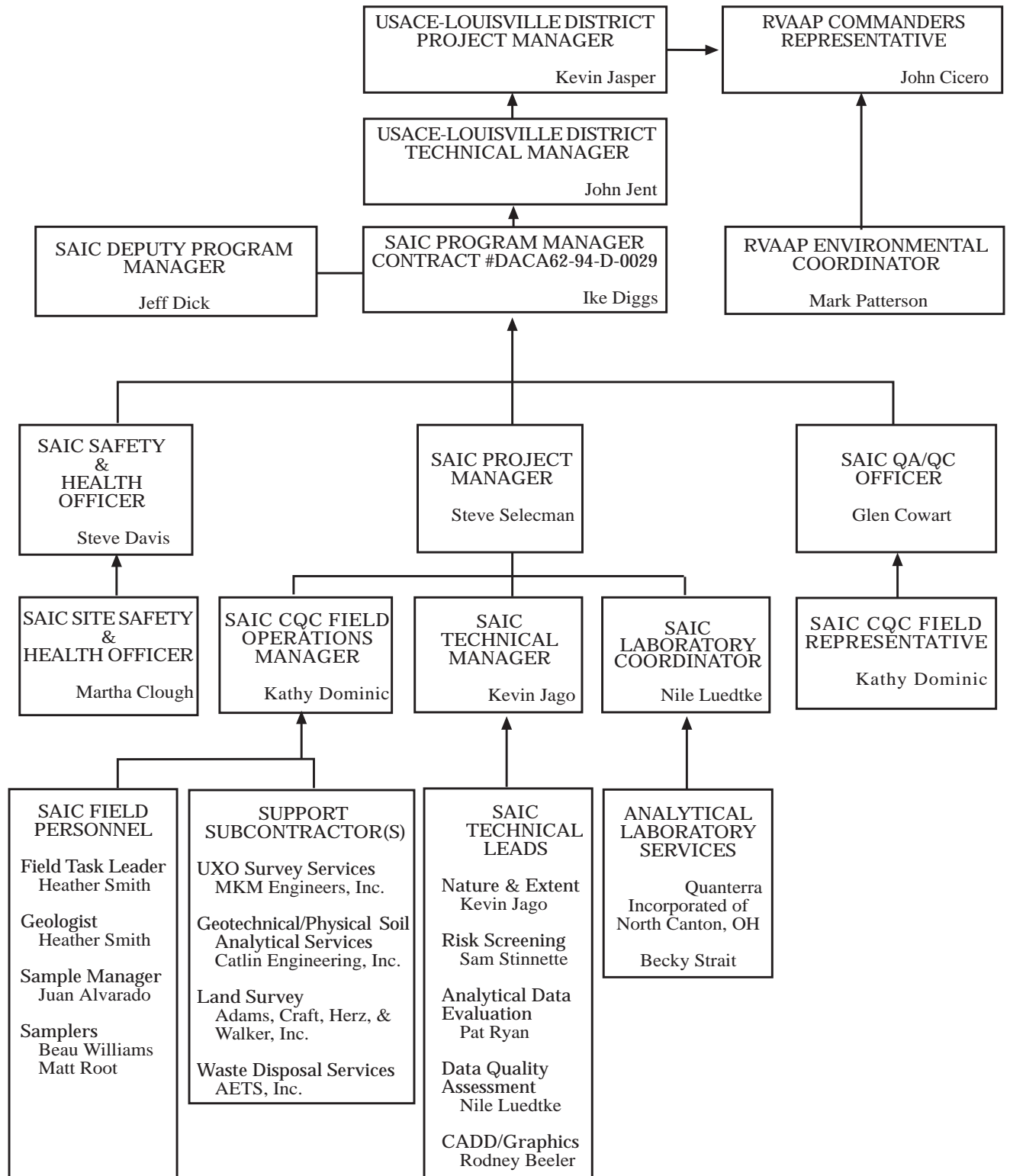


Figure 2-1. Project Organization Chart for the Phase I RI for NACA Test Area

