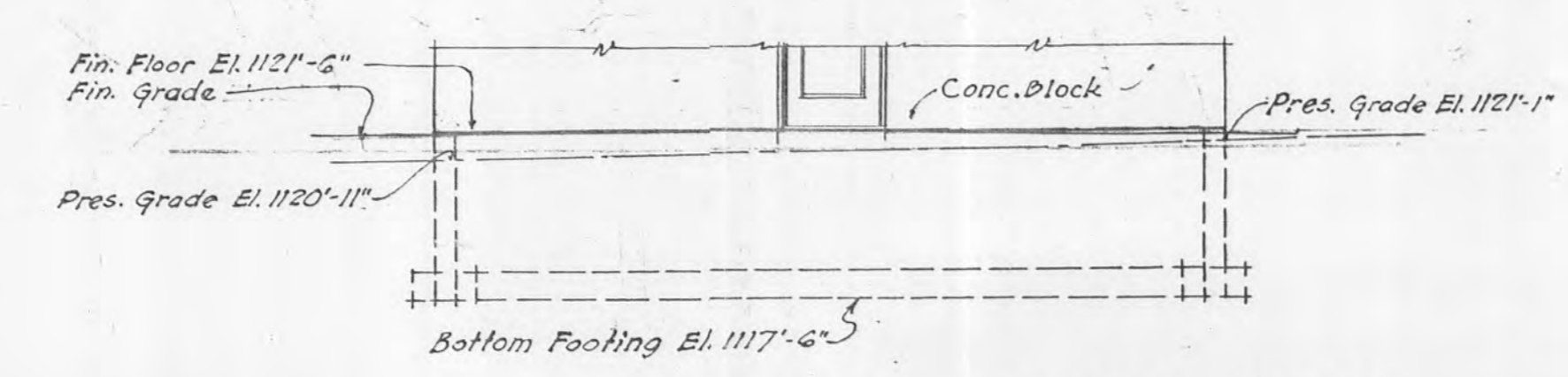
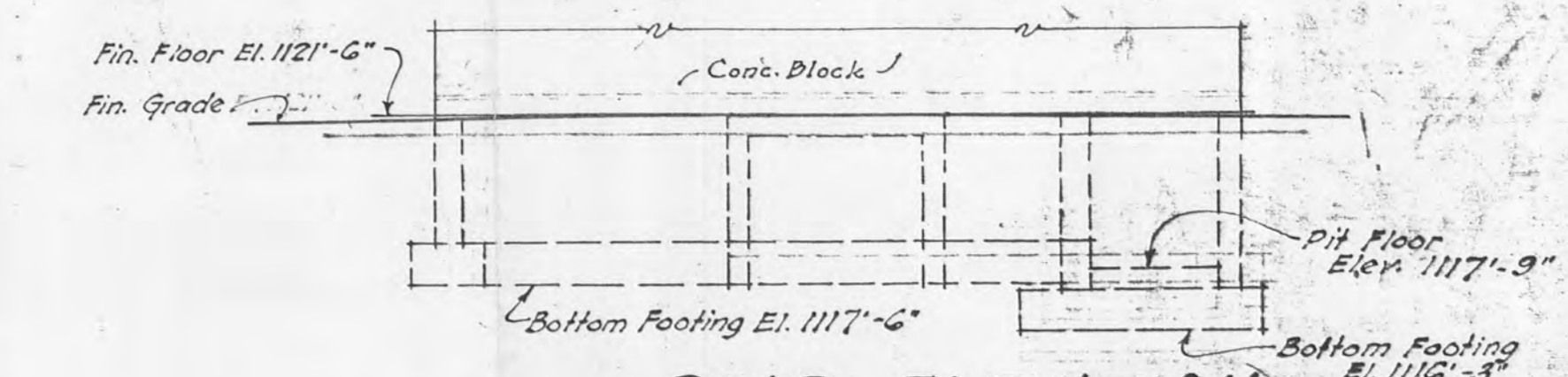


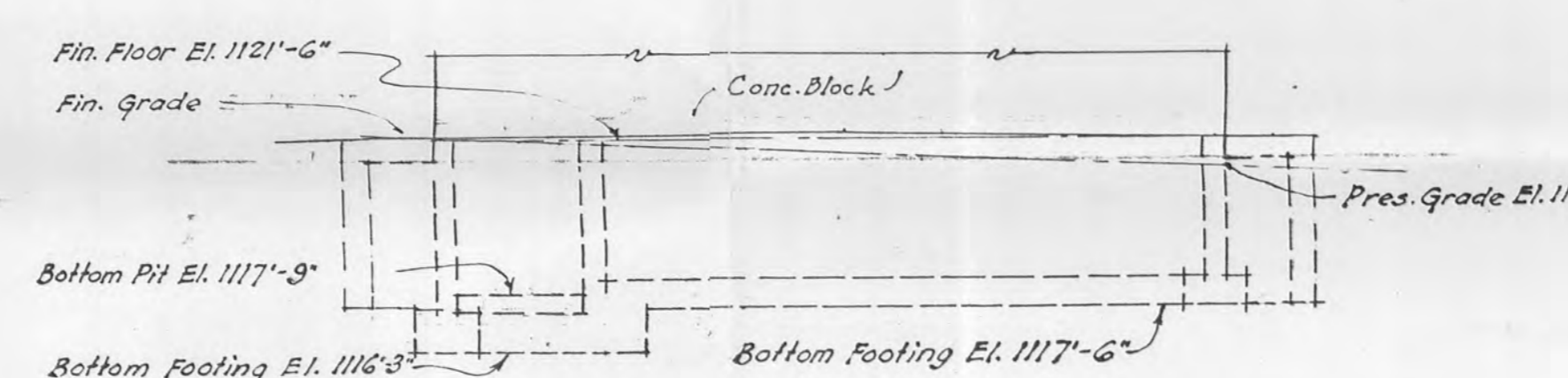
LAYOUT PLAN
AUTO-MOTOR FUEL STATION
Scale - 1/8" = 1'-0"



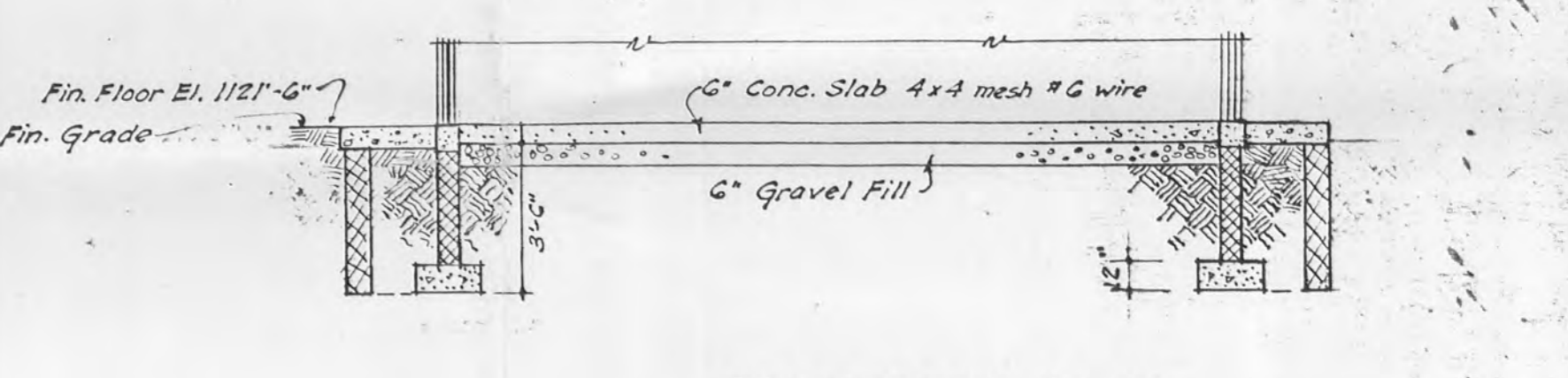
FRONT ELEVATION (EAST)
Scale - 1/4" = 1'-0"



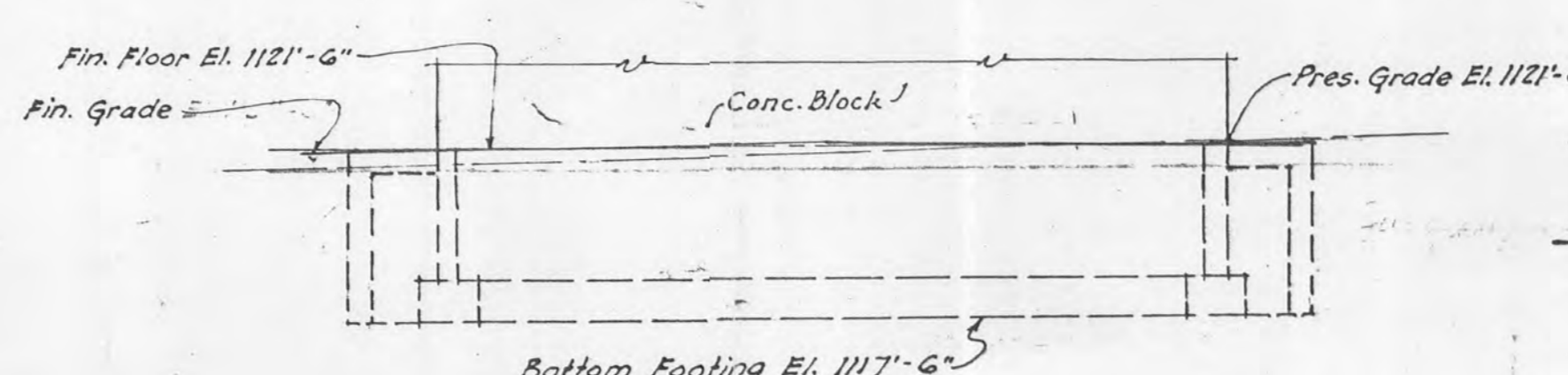
REAR ELEVATION (WEST)
Scale - 1/4" = 1'-0"



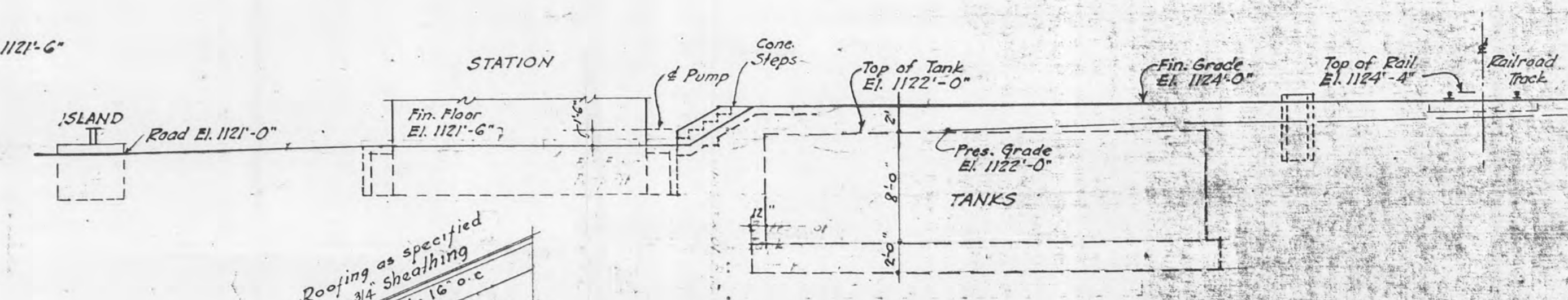
LEFT ELEVATION (SOUTH)
Scale - 1/4" = 1'-0"



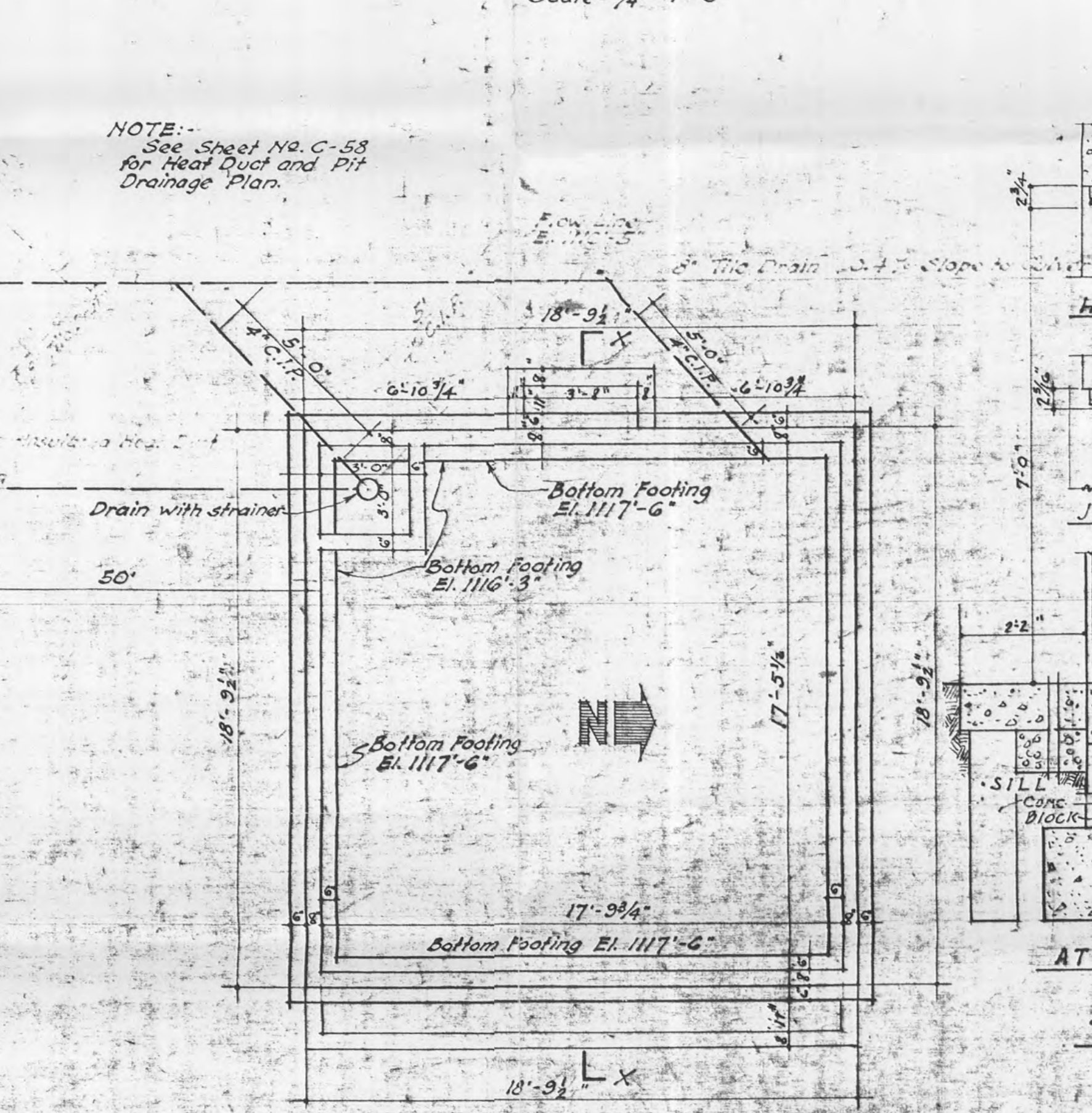
SECTION X X
Scale - 1/4" = 1'-0"



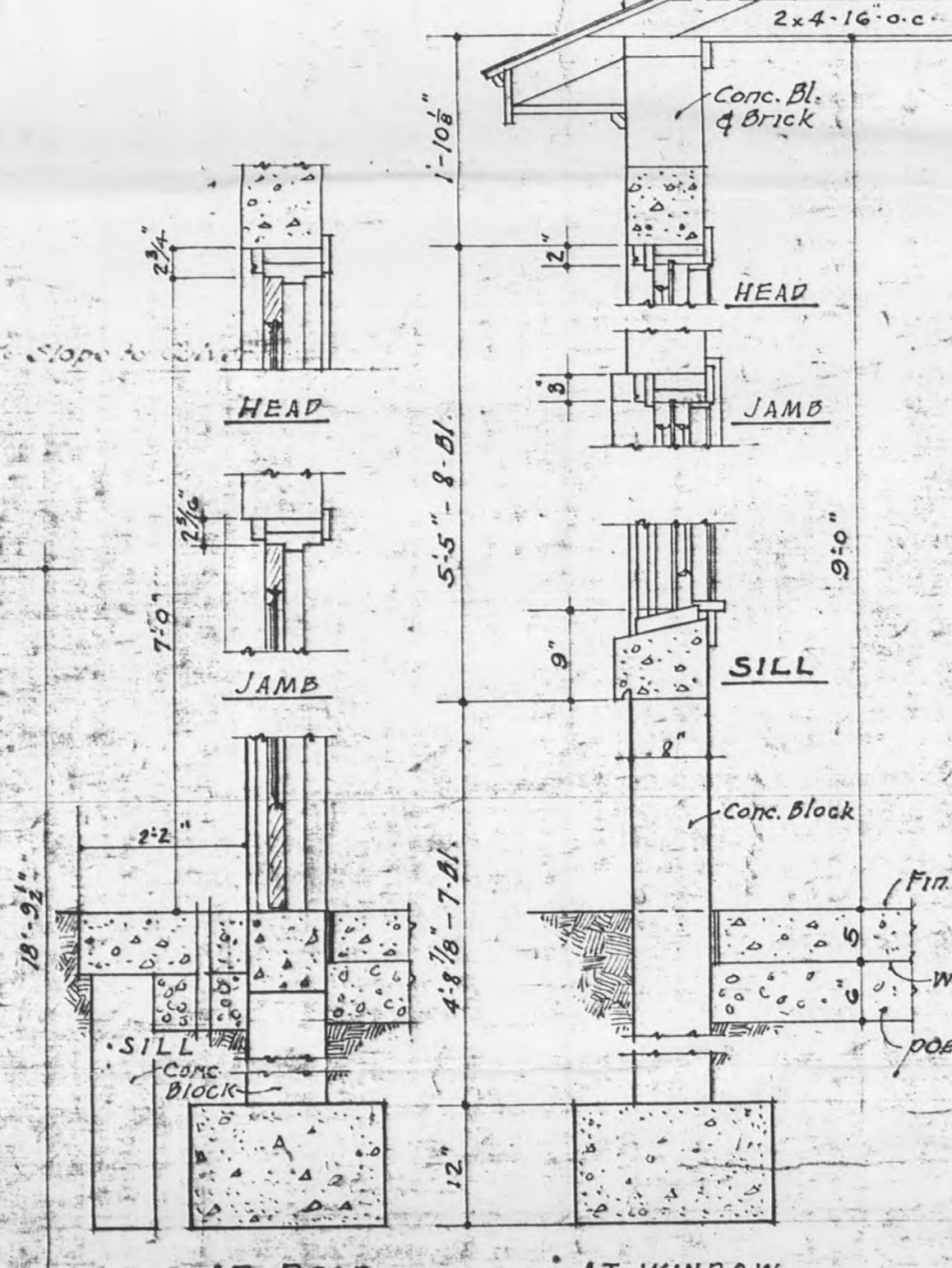
RIGHT ELEVATION (NORTH)
Scale - 1/4" = 1'-0"



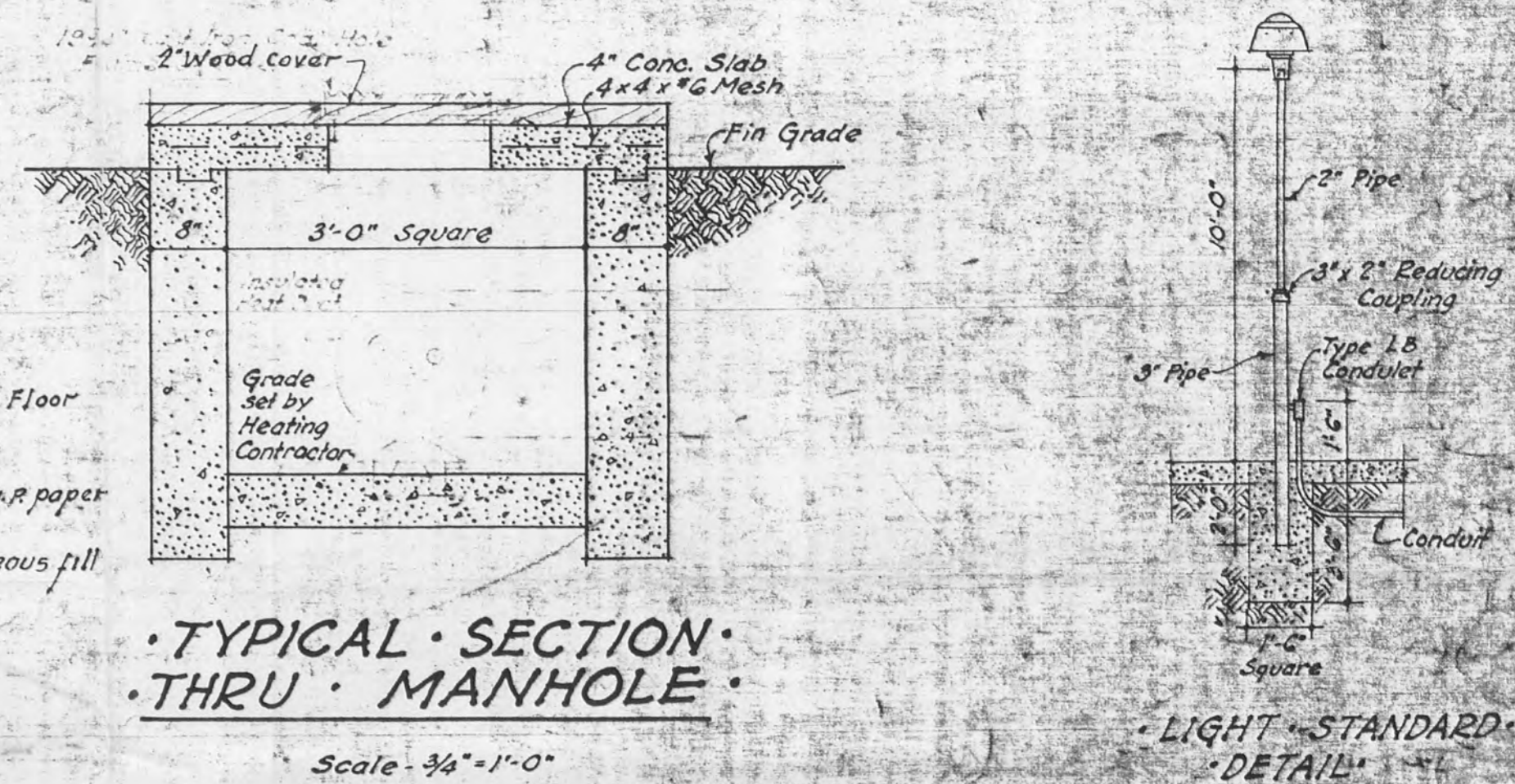
DIAGRAMATIC SECTION
Scale - 1/8" = 1'-0"



FOUNDATION & FOOTING PLAN
Scale - 1/4" = 1'-0"



WALL SECTIONS
Scale 3/4" = 1'-0"



TYPICAL SECTION THRU MANHOLE
Scale - 3/4" = 1'-0"

LIGHT STANDARD DETAIL
Scale - 1/4" = 1'-0"

Note: - Additional Plans and Details:
 PLAN, ELEVATION, DETAILS - U.S. Engineer Office, File ALB 11 (New No. 6988.606 - I.T.H. (Assoc.))
 STD. STORAGE TANK DETAILS - Construction Div., Off. of C.M.G. - Plan 300-650
 TYPICAL LAYOUT PLANS - Construction Div., Office of C.M.G. - Plan 300-616
 UNDERGROUND KEROSENE TANK - PLAN, DETAILS - Past Engineer Dwg. 6988-ED-4-10

DRAWING REVISED PER FIELD SURVEY
 JULY 18th 1956
 CONTRACT NO. BA-11-173-ORD-65
 TRYGVE HOFF & ASSOCIATES
 REV. BY KC. CHK'D BY F.N.M.
 See Gen. Plan 6988-326-A

SECTION Y Y
Scale - 1/4" = 1'-0"

REVISIONS NO. 2 AND 3 APPROVED BY:
 APPROVED
 L.H. EATON - PLANT ENGINEER
 C.W. WILLISTON - ASST. GEN'L. MGR.
 C.W. MELDROM - LT. COL. ORD. DEPT. COMMANDING

SPECIAL NOTE
 WALL SECTIONS ADDED & PLANS & ELEVATIONS REVISED TO CONFORM TO CONCRETE BLOCK CONSTRUCTION. TANK LAYOUT REVISED AS BUILT.
 BLDG. USED AS FUEL OIL STATION, as of Nov. 21, 1944.

THE JENNINGS-LAWRENCE CO.
ARCHITECT-ENGINEER
 COLUMBUS, O. RAVENNA, O.

CONSTRUCTION DIVISION
 OFFICE OF THE CHIEF OF ENGINEERS

PORTAGE ORDNANCE DEPOT
MOTOR FUEL STATION (AUTO)
 LAYOUT & FOOTING PLANS - DETAILS

REVISIONS	DATE	BY
1	4-14-56	KC
2	4-14-56	F.N.M.
3	4-14-56	F.N.M.

DRAWN BY: [Signature] CHECKED BY: [Signature] APPROVED BY: [Signature]
 DATE: 4-14-56
 PLAN NO.: 6988-606