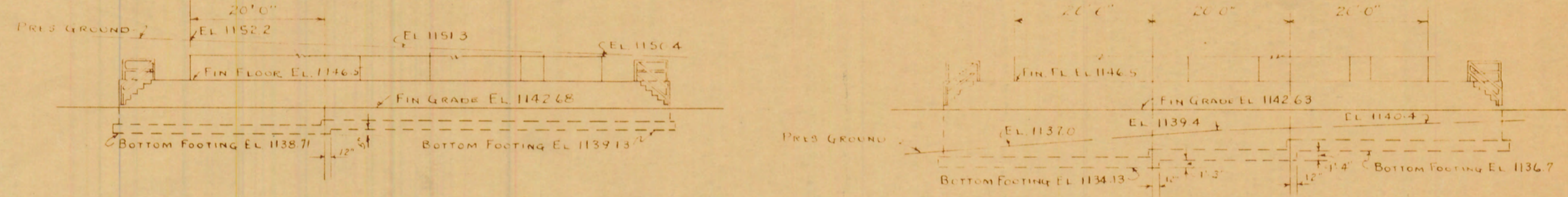
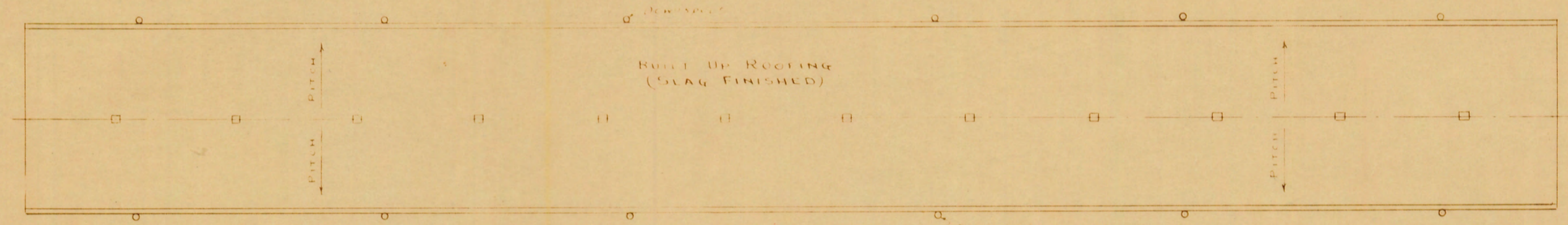


**SIDE ELEVATION**  
SCALE 1/8" = 1'-0"  
OPPOSITE SIDE SIMILAR EXCEPT  
BASEMENT TOILETS OMITTED

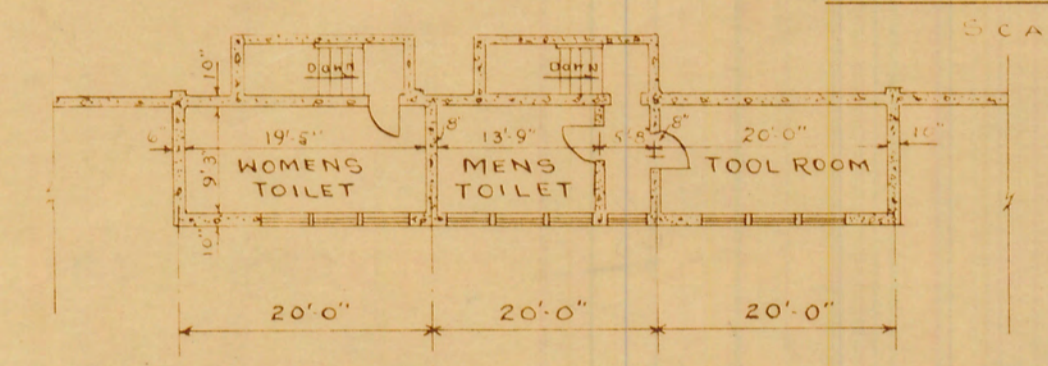


**SOUTH ELEVATION**  
SCALE 1/8" = 1'-0"

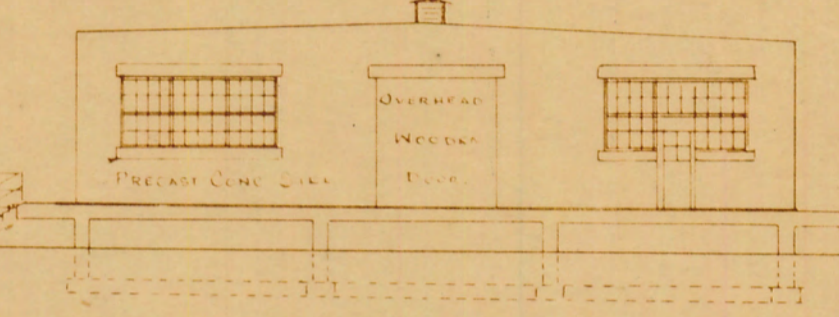
**NORTH ELEVATION**  
SCALE 1/8" = 1'-0"



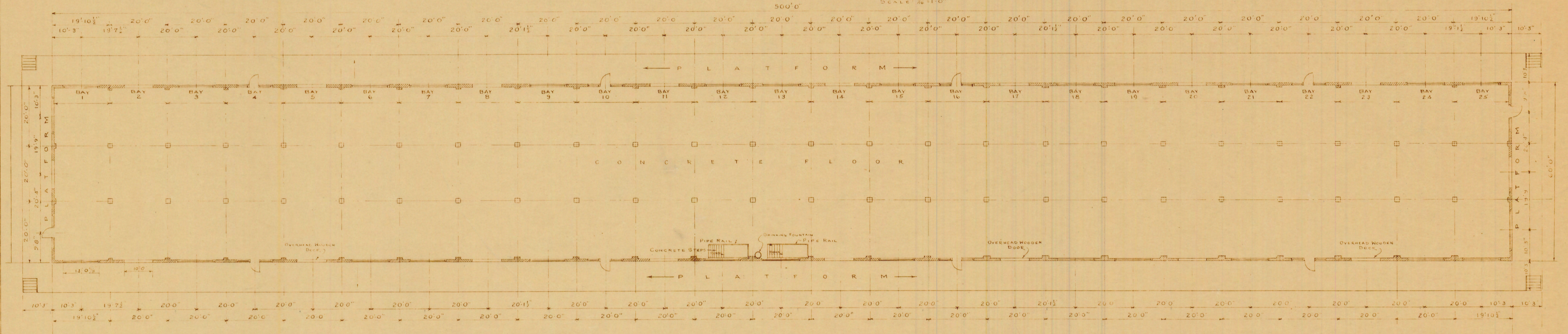
**ROOF PLAN**  
SCALE 1/8" = 1'-0"



**BASEMENT TOILETS & TOOL ROOM**  
SCALE 1/8" = 1'-0"

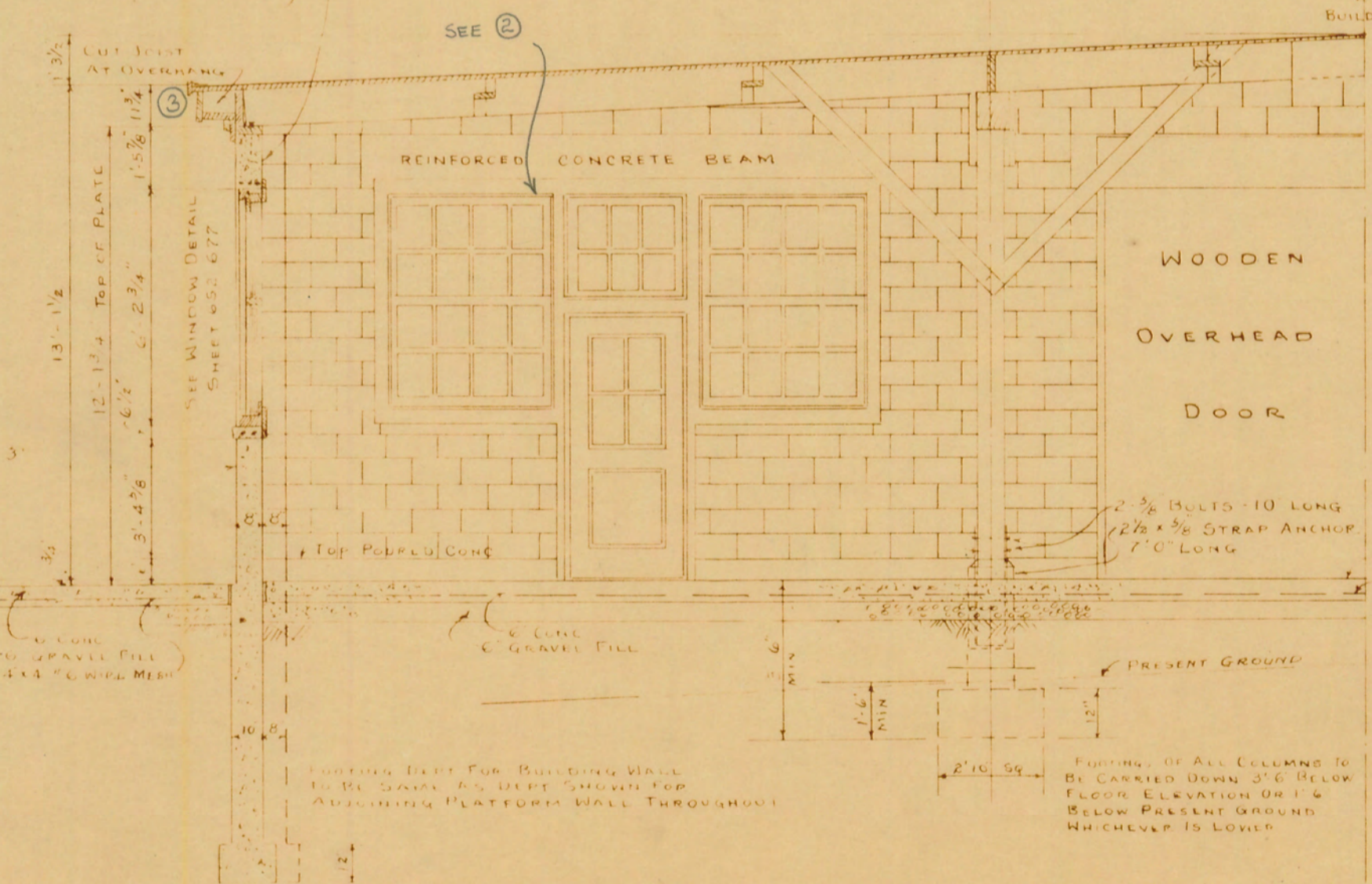


**END ELEVATION**  
SCALE 1/8" = 1'-0"  
OPPOSITE END SIMILAR



**FIRST FLOOR PLAN**  
SCALE 1/8" = 1'-0"

2" x 10" REINFORCED CONCRETE BEAM  
1 #2 STEEL - 2 #2 BENT  
#4 @ 2' SPACING, STARTING 9" FROM  
#4 BEARING EACH END



**HALF SECTION TYPICAL**  
SCALE 1/4" = 1'-0"

- ③ METAL GUTTER & DOWNSPOUTS ADDED
- ② DOORS & WINDOWS REPLACED W/ STEEL SASH
- ① ROOF VENTILATORS REPLACED W/ METAL VENTS

ROOF PLAN AND DETAILS - SEE DRWG. NO. C-68  
ROOF VENTILATOR DETAILS - SEE DRWG. NO. C-68  
FOOTING PLAN AND DETAILS - SEE DRWG. NO. C-67  
FOR ORIGINAL PLANS, ELEVATIONS & SECTIONS  
SEE DRAWING NO. 652-676

DRAWING REVISED PER FIELD SURVEY  
DATE JANUARY 22ND 1937  
CONTRACT NO. DA-11-173-ORD-65  
**TRYGVE HOFF & ASSOCIATES**  
REV. BY S.S. CHK'D BY A.S.

**RAVENNA ARSENAL**  
APCO OHIO  
**POST ENGINEER**  
**BUILDING NO. U-14**  
**PLANS, ELEVATIONS & SECTIONS**

DRAWN O.T. ANDERSON	APPROVED L.T. COL. C.E. POST ENGINEER	DATE 10-15-42
TRACED O.T. ANDERSON	CHECKED I.C.W.	SCALE AS NOTED
DRAWING NO. <b>WD-C-244</b>		<b>6988.645-1</b>

NOTE:  
SEE P. A1. DRG. FOR WINDOW CONVERSION  
FROM WOOD TO STEEL, ALSO REMOVAL OF  
5 PED. DOORS, DWG. # 1179, JAN. 12, 1934

BLDG. NO. U-14

NOTE:  
ALL WALLS BELOW MAIN FLOOR TO  
BE POURED CONCRETE