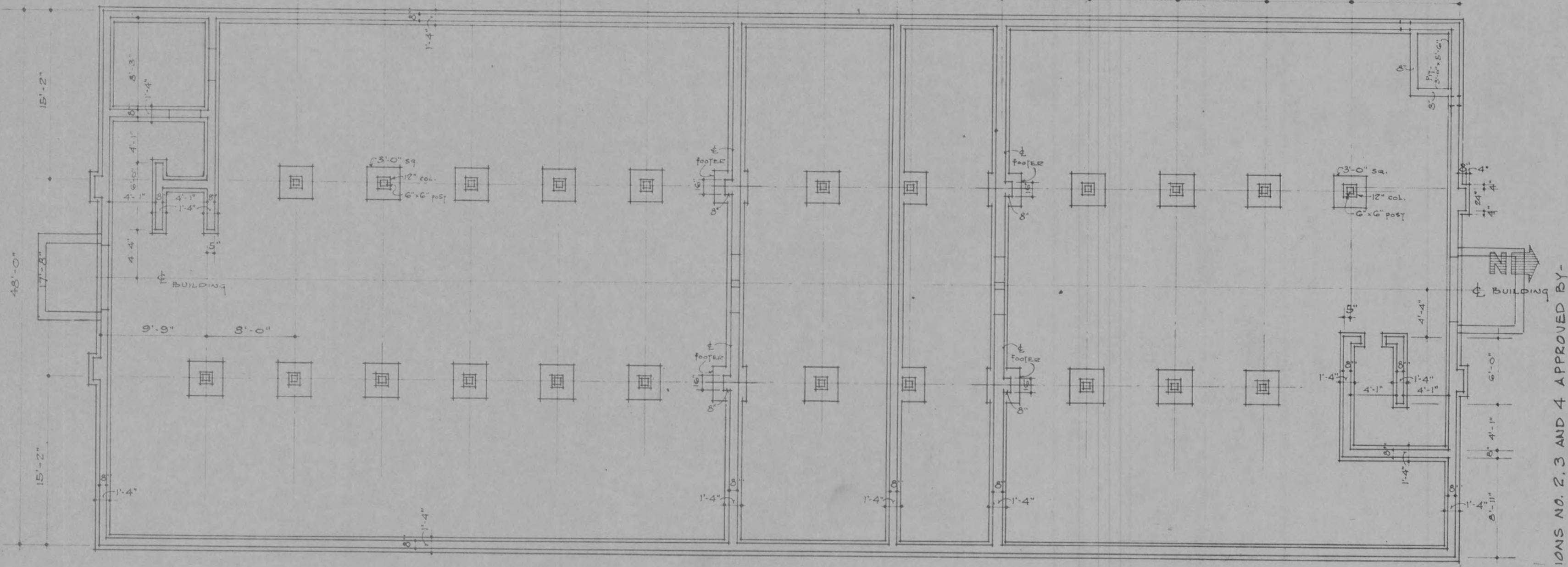
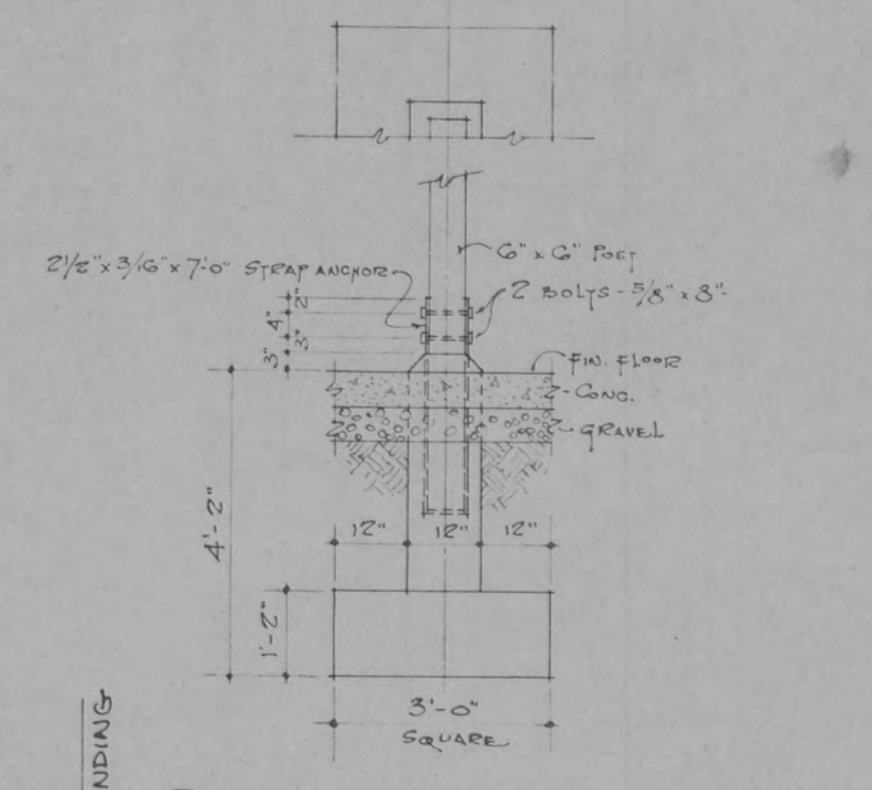


NOTE:
 A- MOVABLE SHELVES
 8'-0" L X 2'-0" W X 6'-0" H
 7 SHELVES
 FROM IW-1

NOTE:
 TOILET ROOM REMODELLED
 SEE ATLAS POWDER CO. DWG. AR-5412

BLDG. USED, as of Nov. 22, 1944, FOR FOLLOWING:-
 (Workers' Change House Equipment removed or altered accordingly.)
 First Floor - Roads Maintenance
 Farm - Grounds Maintenance
 Stores Division
 Second Floor - Lumber Yard Checkers

LOCATION OF C.W. SERVICE
 & HOUSE DRAIN INDICATED



REVISIONS NO. 2, 3 AND 4 APPROVED BY:
 L. R. EATON - PLANT ENGINEER
 C. H. WILLIUSTON - ASST. GEN. MGR.
 C. W. MELDRUM - LT. COL. ORDN. DEPT. COMMANDING

DRAWING REVISED PER FIELD SURVEY
 DATE AUGUST 15th, 1956
 DRAWING NO. FA-1193-027-55
 TRUCE HOUS. ASSOCIATES
 BY: K.G. CHECKED BY: F.N.M.
 APPROVED: *Marvin L. Kaffer*
 MARVIN L. KAFFER
 MAJOR - ORDNANCE DEPT.
 COMMANDING OFFICER

THE JENNINGS-LAWRENCE CO. ARCHITECT-ENGINEER		COLUMBUS, OHIO RAVENNA, OHIO	
SCALE: As Noted		CONSTRUCTION DIVISION OFFICE OF THE CHIEF OF ENGINEERS	
PORTAGE ORDNANCE DEPOT			
WORKERS CHANGE HOUSE			
FOOTING & FLOOR PLANS			
ELEVATIONS			
DESIGNED BY A.T.	CHECKED BY For F.E. Smith	DATE SEPT. 22, 1942	
TRACED BY J.M.S.	CAPT. C. O. E., AREA ENGR.	PLAN NUMBER 6988-632-A	
SHOWING TOOL CHANGES SEPT. 1957			