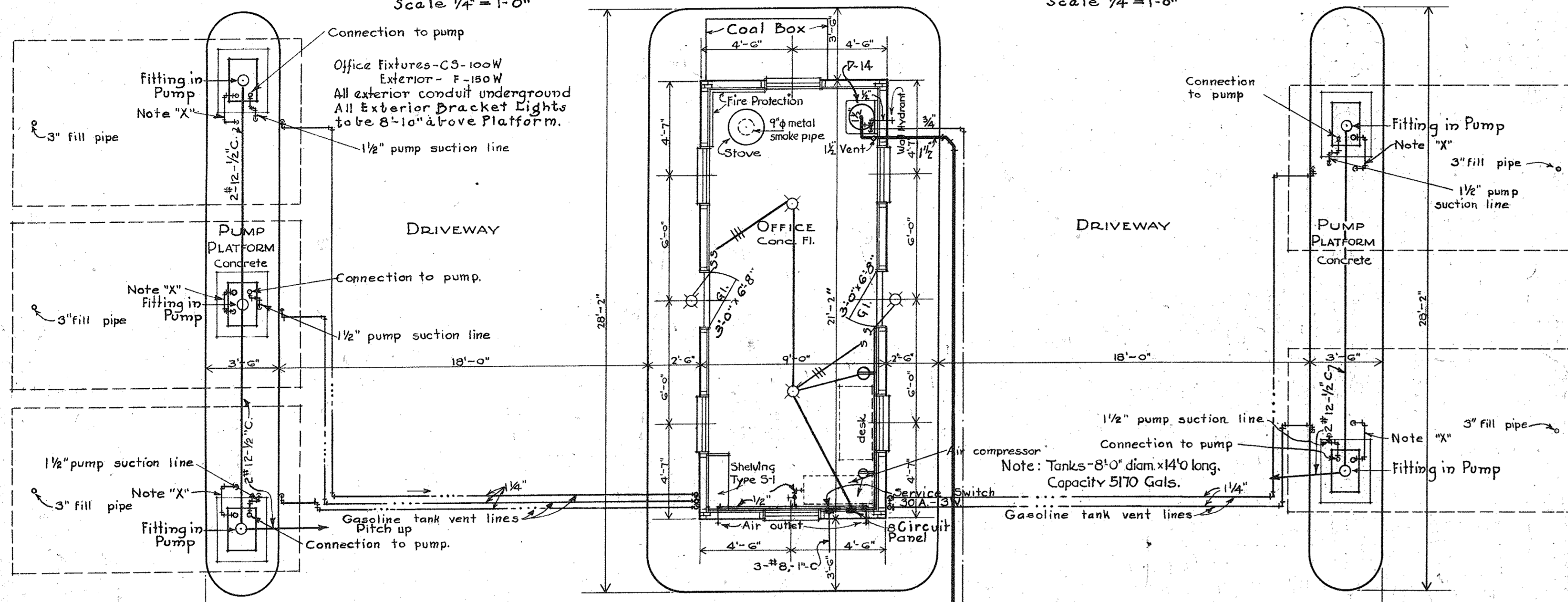
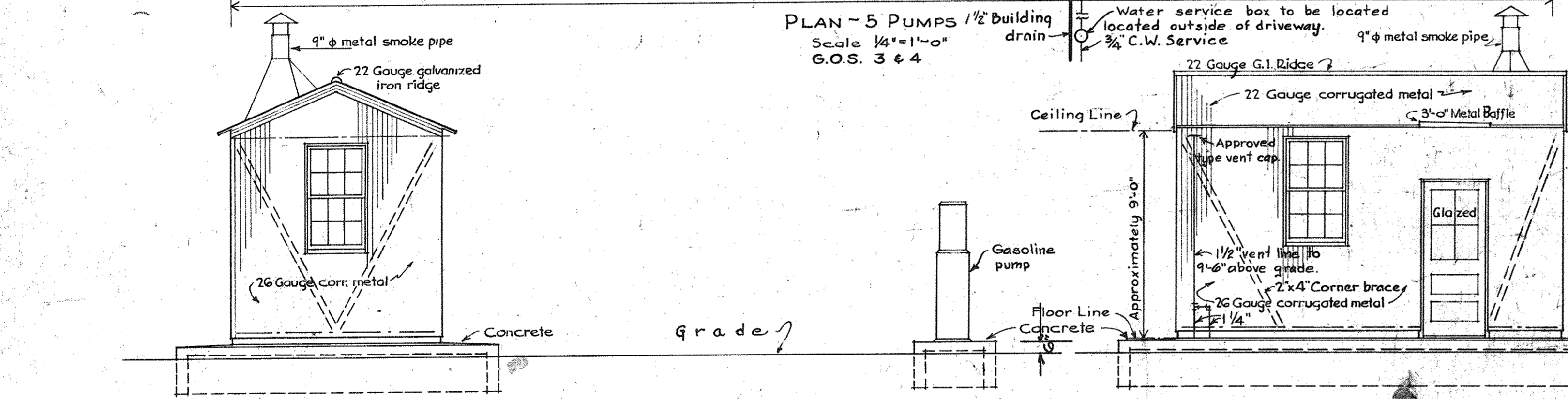


DETAIL AT WINDOW
Scale 1 1/2" = 1'-0"

TYPICAL CROSS SECTION
Scale 1/2" = 1'-0"



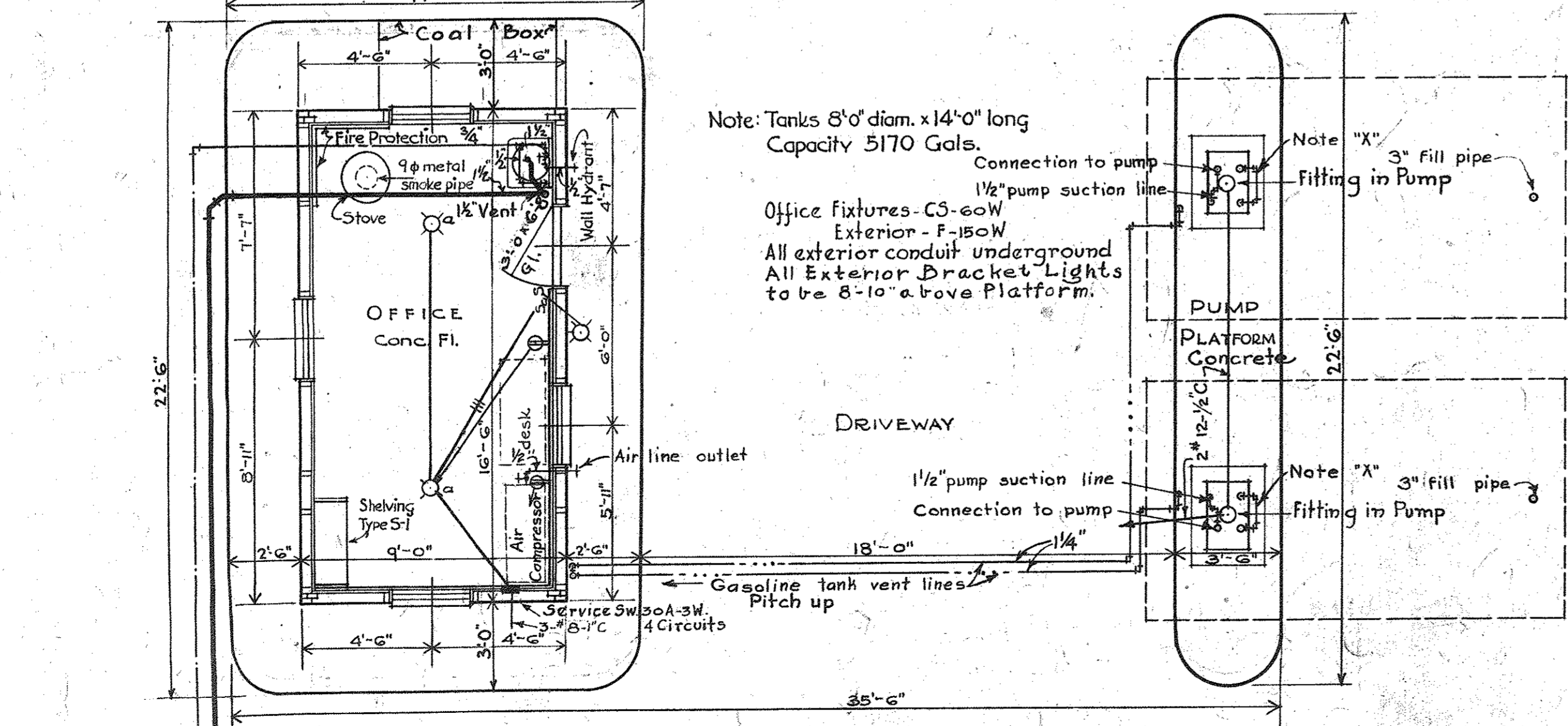
PLAN - 5 PUMPS 1 1/2" Building
Scale 1/4" = 1'-0"
G.O.S. 3 & 4



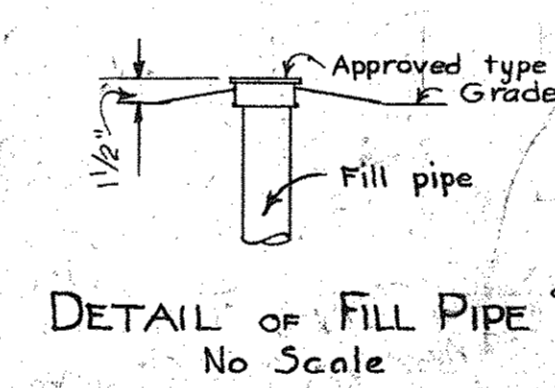
END ELEVATION
Scale 1/4" = 1'-0"

PUMP PLATFORM
Scale 1/4" = 1'-0"

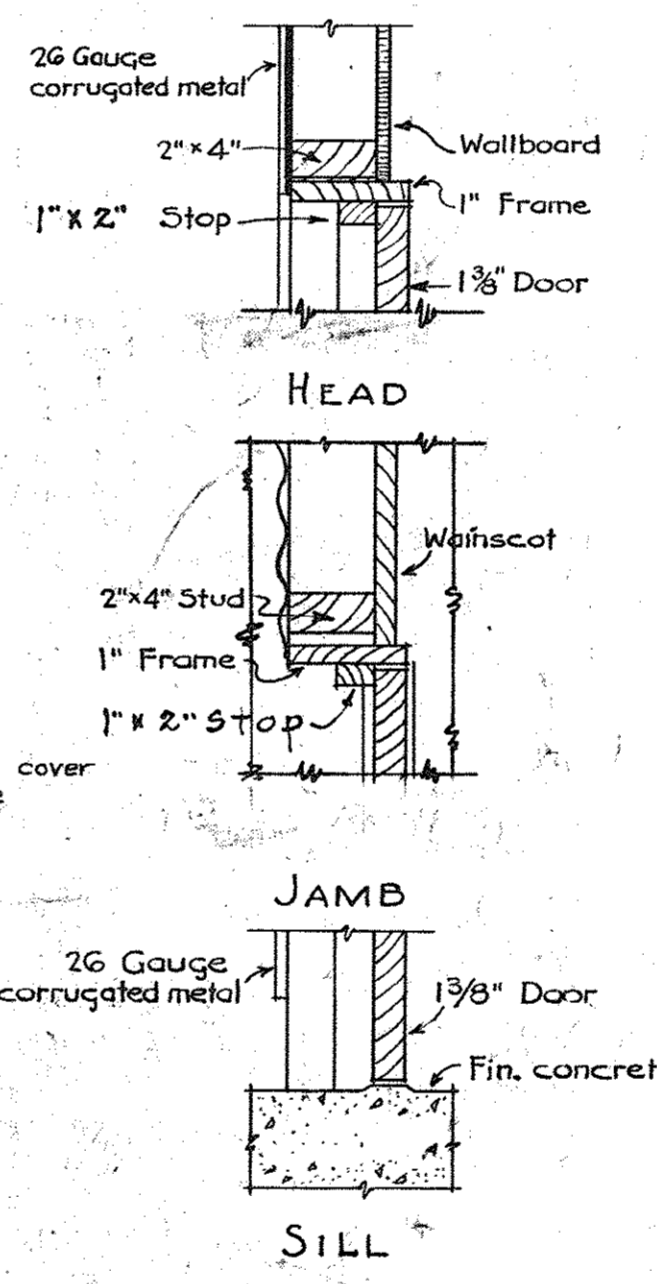
SIDE ELEVATION
Scale 1/4" = 1'-0"



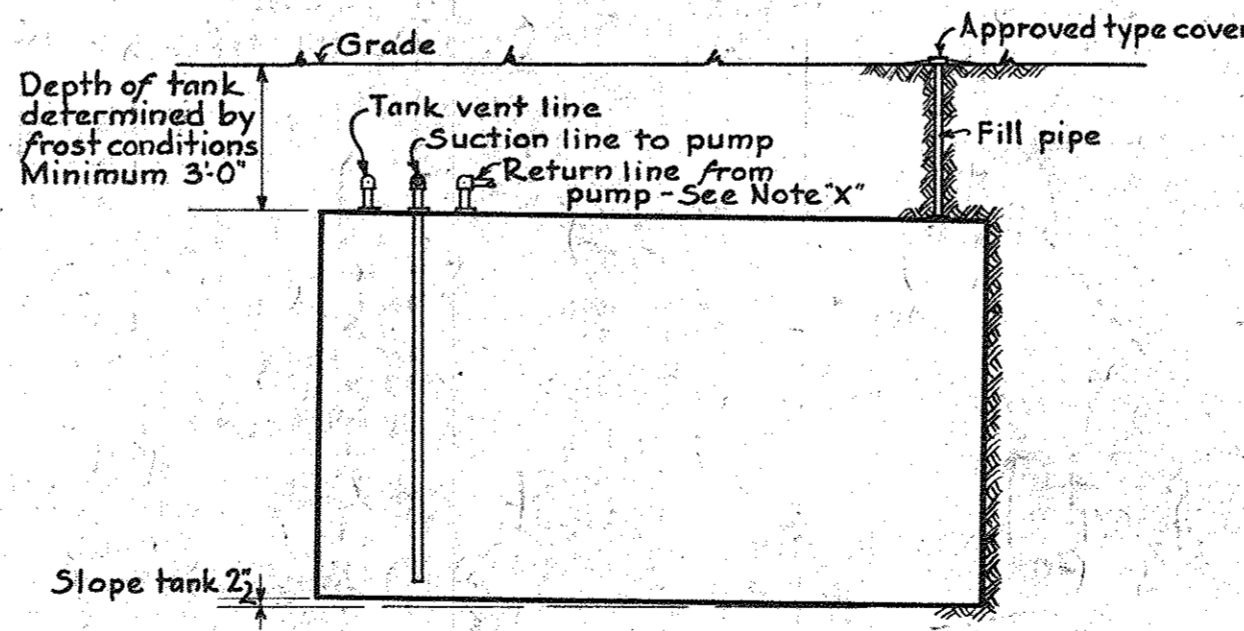
PLAN - 2 PUMPS
Scale 1/4" = 1'-0"
G.O.S. 1 & 2



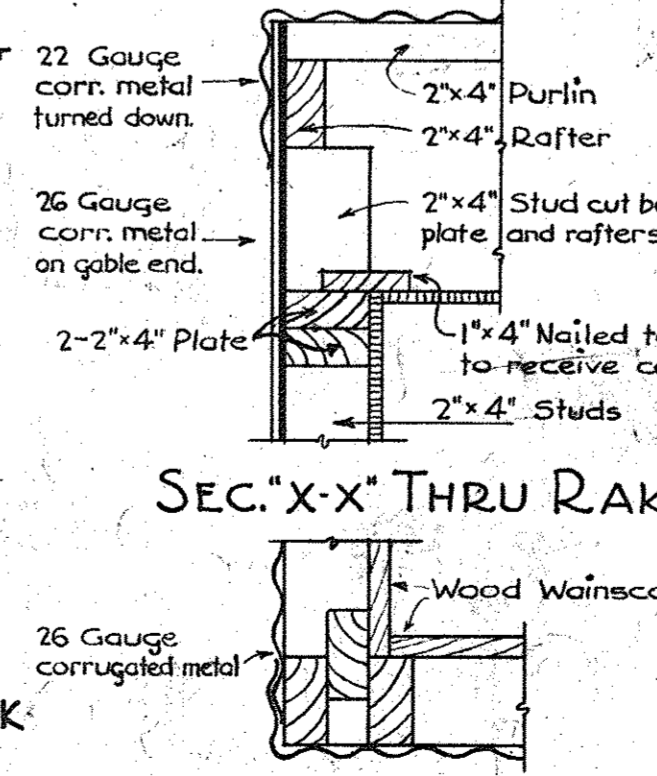
DETAIL OF FILL PIPE
No Scale



DETAIL AT DOOR
Scale 1 1/2" = 1'-0"



LONGITUDINAL SECTION THRU GASOLINE STORAGE TANK
FOR HAND OR ELECTRIC SUCTION PUMP
No Scale



SEC. 'X' THRU RAKE

PLAN AT CORNER
Scale 1/2" = 1'-0"

The following detail drawings apply to this building, 700-233, 234, 241, 243, in all construction zones.

- LEGEND
- C.W. — Cold Water Line
 - Drain Line
 - Gasoline Line
 - Tank Vent Line
 - G.I. — Galvanized Iron
 - GI. — Glazed

NOTES

- Dimensions are to outside face of studs for exterior walls.
- All lumber to be dressed. Sizes indicated on drawings are rough sizes. Use Graphic Scales only when drawings are reduced in size. Original size of sheet is 25 x 36 inches.
- Bottom of curb footings to extend to frost line, but not less than 1'-0" below finished grade and at least 6" below natural grade.
- Foundations are figured for a soil bearing value of 3000 Pounds per sq. foot.
- All doors to be 3'-0" x 6'-8" x 1 3/8" unless otherwise noted.
- Cement thresholds to all exterior doors.
- Concrete to be composed of 1 part Portland cement, 2 1/2 parts sand and 3 parts aggregate by volume.
- Concrete without integral finish to have concrete floated smooth.
- In Southern Construction Zones, omit the interior finish on exterior walls.
- Fire Protection: On the walls back of stove, to the width as indicated on the plans for Fire Protection, this space to be lined to a height of 6'-0" with 1/4" asbestos board, this to be covered with 24 gauge galv. iron, secured to 1" x 2" strips, approximately 1'-6" on centers, placed vertically, and leaving an air pocket, the iron to start from 4 inches above the floor.
- All corrugated metal to be galvanized.
- Ground each metal building with 3/4" electrical metallic tubing extending without sharp bends from ridge, and connecting to a 3/4" x 7'-0" driven pipe. Metallic tubing to be fastened securely to corrugated metal at 1'-0" intervals. Ground pipes to be separately driven and isolated from underground pipes & tanks.
- All pipe & fitting connections to gasoline storage tanks to be galvanized iron.

- NOTE 'X':
Where hand pumps are used provide 1 1/2" return line from pump to tank.
Scale:
1/4" = 1'-0"
1/2" = 1'-0"
1 1/2" = 1'-0"

CONSTRUCTION DIVISION
OFFICE OF THE QUARTERMASTER GENERAL

MOBILIZATION BUILDINGS
STATION HAND GASOLINE & OIL.

G.O.S-1(10,000 GALS) 2 HAND PUMPS - G.O.S-2(10,000 GALS) 2 ELEC PUMPS
G.O.S-3(25,000 ") 5 " " " - G.O.S-4(25,000 GALS) 5 " " "

APPROVED BY SECRETARY OF WAR
By Ist. Ins. - AG. O. May 5, 1937

DRAWN BY Carroll	CHECKED BY dek	APPROVED BY DIRECTION E.A.	DATE May 5, 1937
TRACED BY Carroll	CAPT. DMC.		PLAN NUMBER 700-365