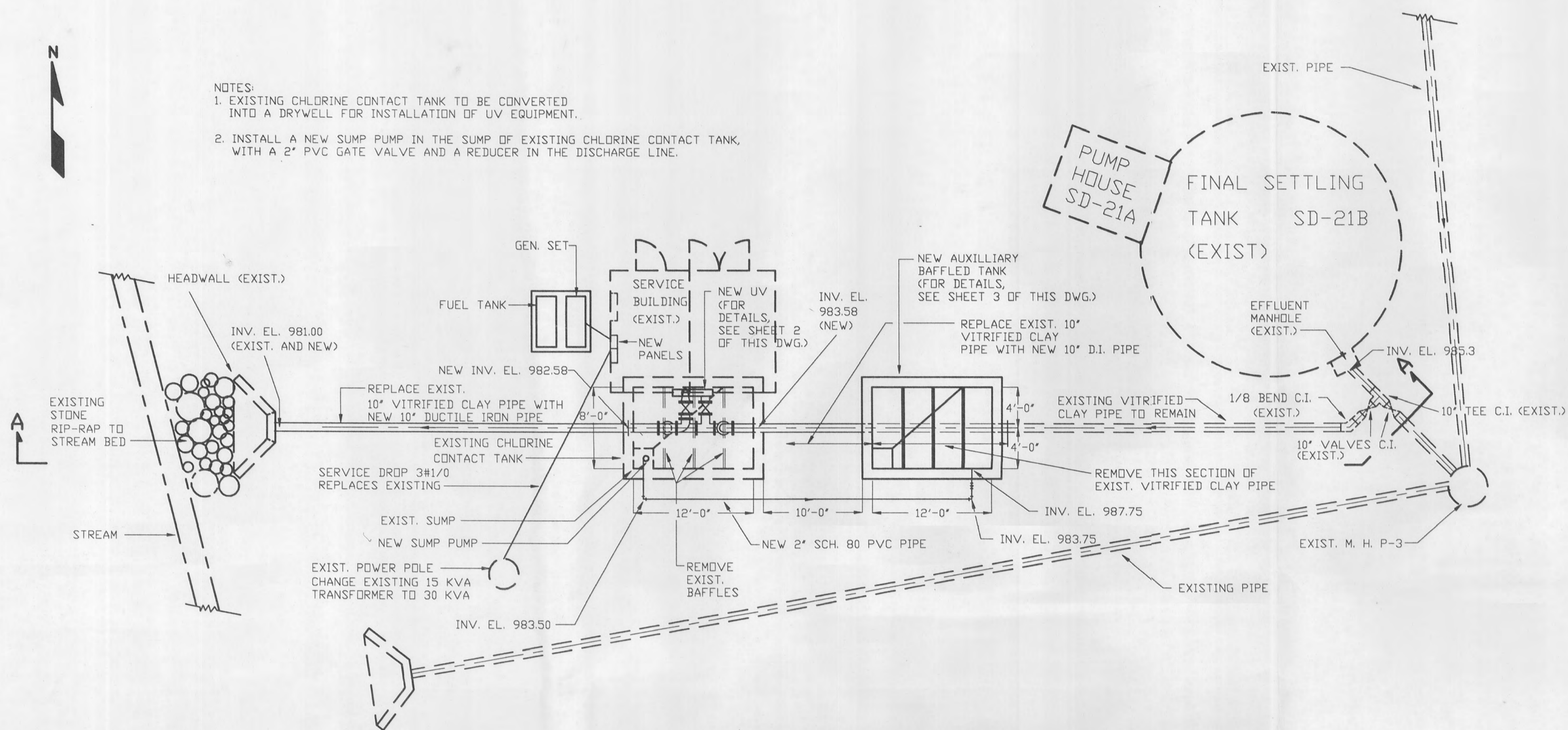
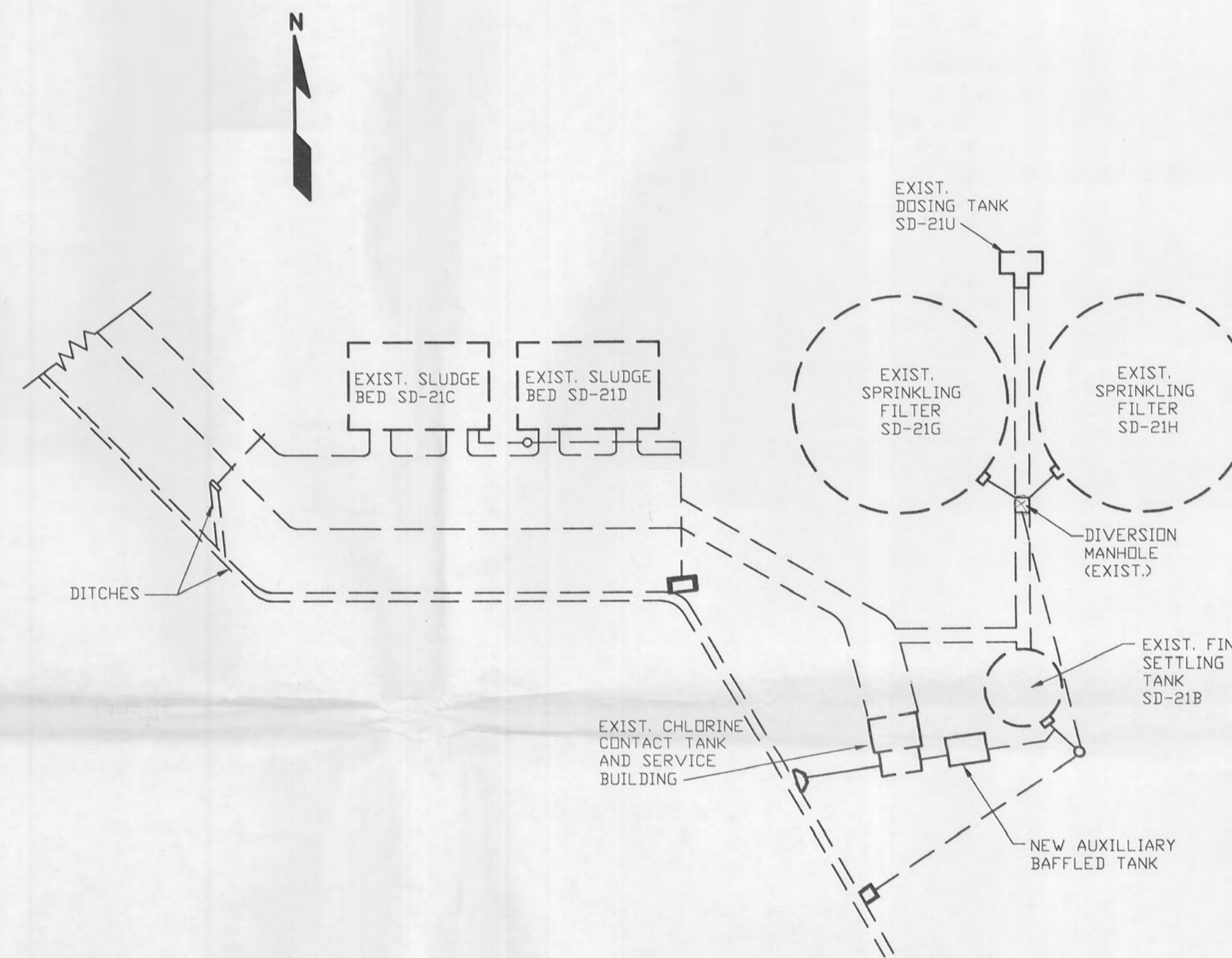




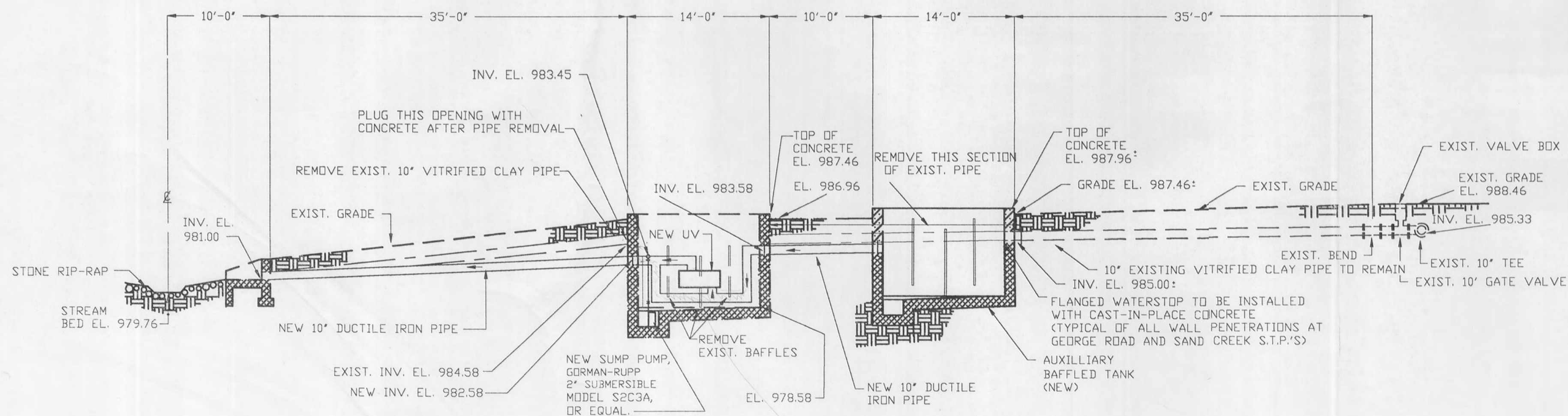
- NOTES:
- EXISTING CHLORINE CONTACT TANK TO BE CONVERTED INTO A DRYWELL FOR INSTALLATION OF UV EQUIPMENT.
  - INSTALL A NEW SUMP PUMP IN THE SUMP OF EXISTING CHLORINE CONTACT TANK, WITH A 2" PVC GATE VALVE AND A REDUCER IN THE DISCHARGE LINE.



**PLAN - DECHLORINATION SYSTEM**  
SCALE: 1/8" = 1'-0"



**SITE PLAN**  
**GEORGE ROAD SEWAGE TREATMENT PLANT**  
SCALE: 1" = 40'



**SECTION A**  
SCALE: HORIZ. 1/8" = 1'-0"  
VERT. 1/8" = 1'-0"

*will this be a way on bypassing the UV unit when disinfection is discontinued?*

RECEIVED  
DEC 21 1992  
ENGINEERING

BAT ASSOCIATES, INC. ENGINEERS, SCIENTISTS, PLANNERS EUCLID, OHIO	
TITLE RAVENNA ARMY AMMUNITION PLANT DECHLORINATION SYSTEM GEORGE ROAD SEWAGE TREATMENT PLANT	
DRW:KAK ENGR:LDC CHKD:LDC DWG. NO. A-3794	DATE: 12/14/92 SCALE: AS NOTED SHEET 1 OF 4

REVISIONS	
NO.	DESCRIPTION
0	FOR REVIEW ONLY