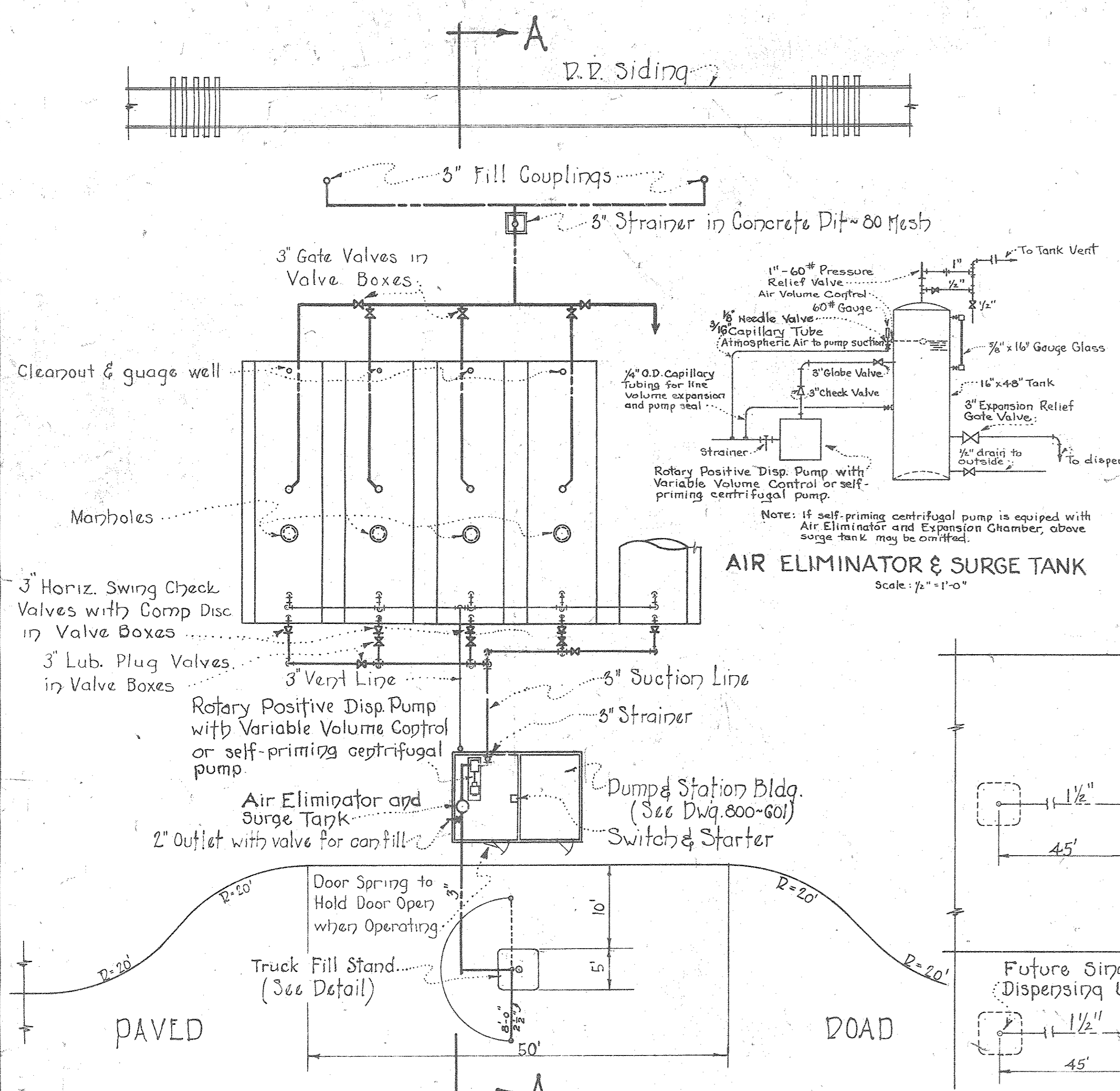
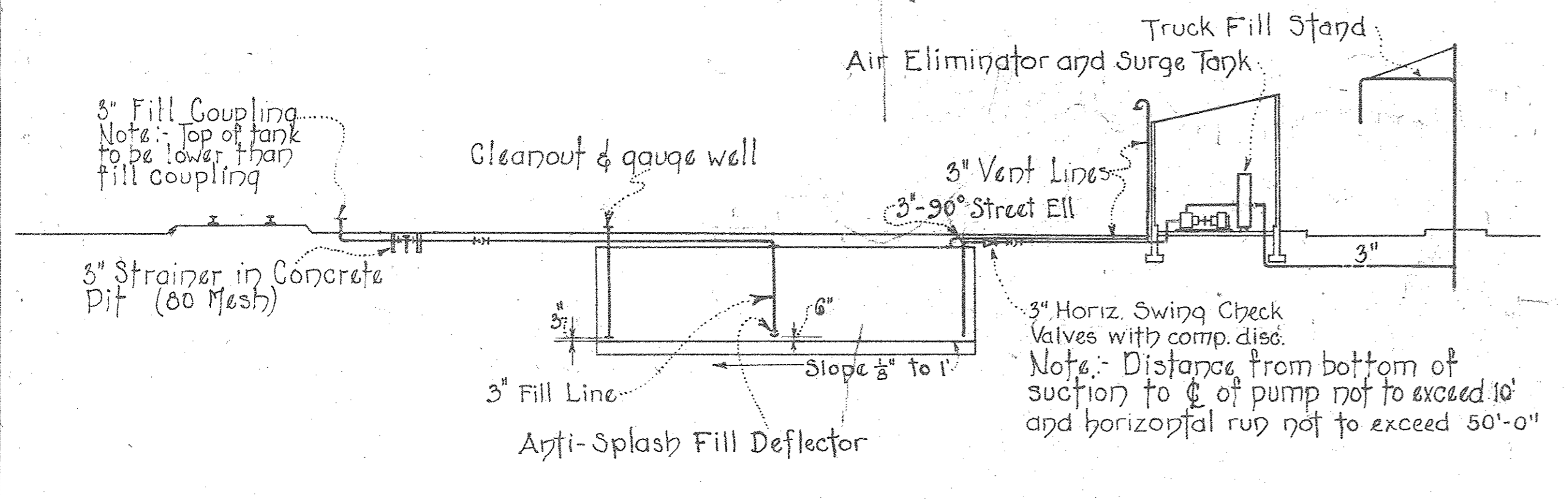


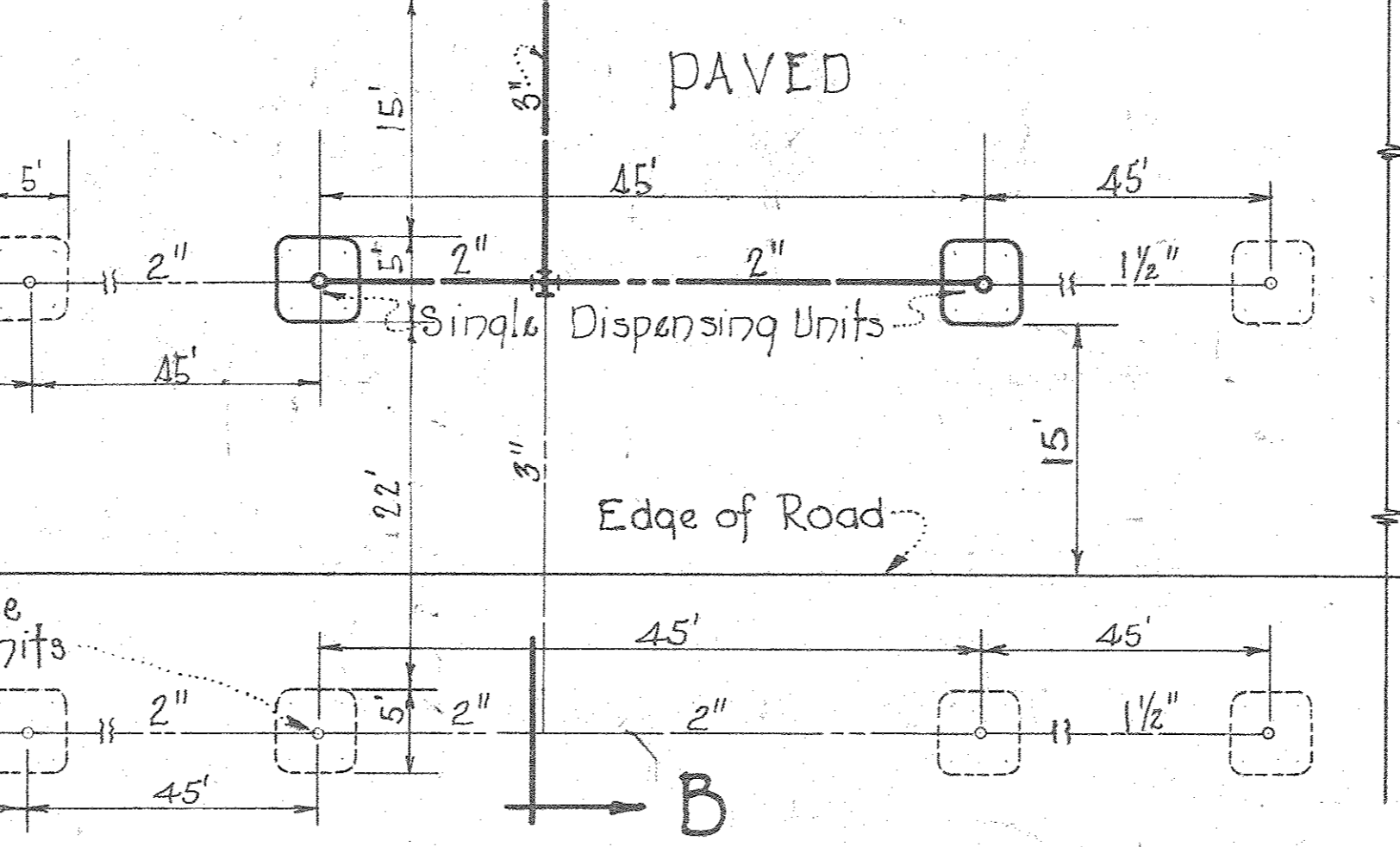
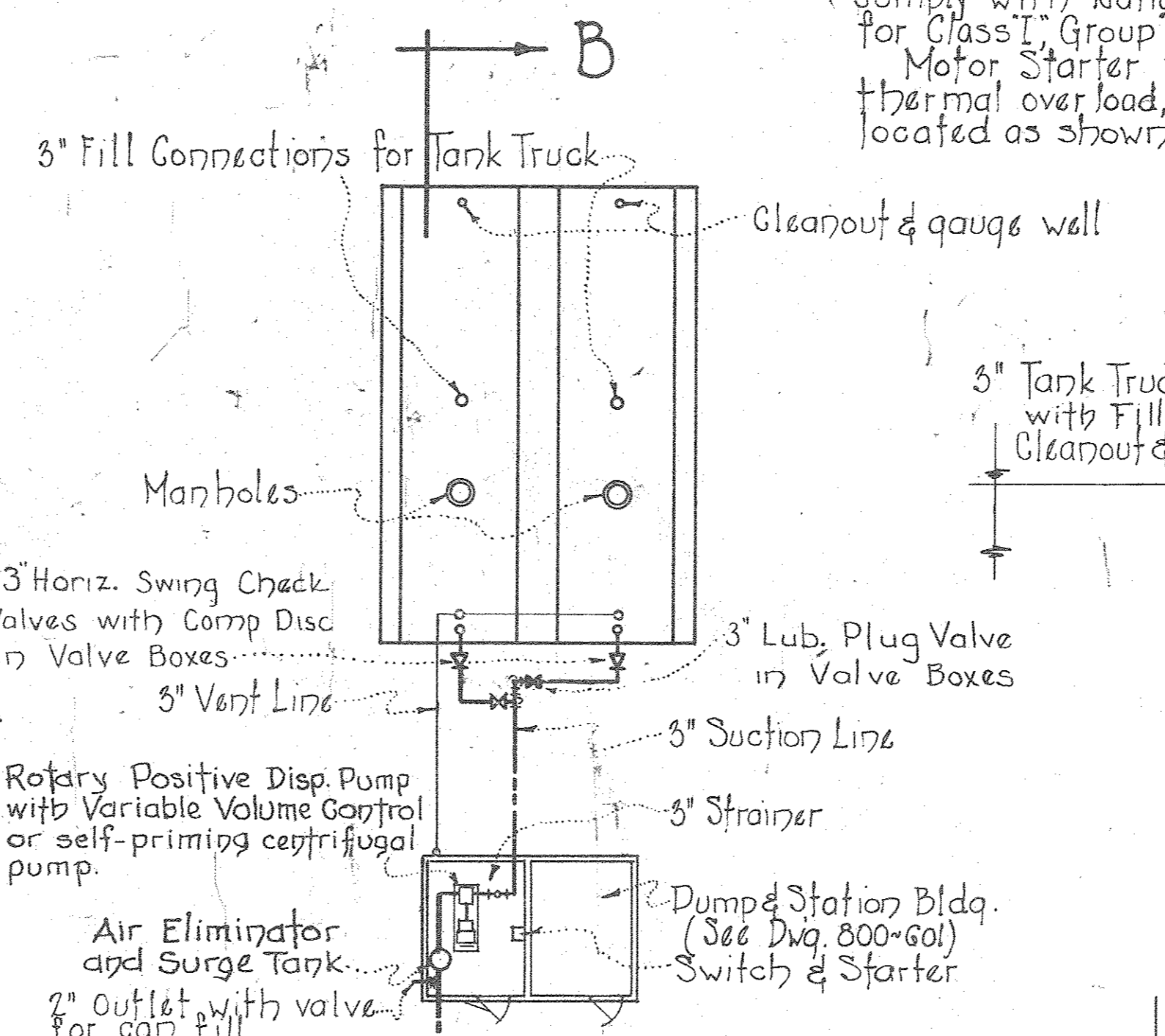
NOTE: All electrical work in pump room shall comply with National Electric Code requirements for Class I, Group D, explosion proof installation. Motor starter to consist of manually operated, thermal over load, combination switch & starter, located as shown.



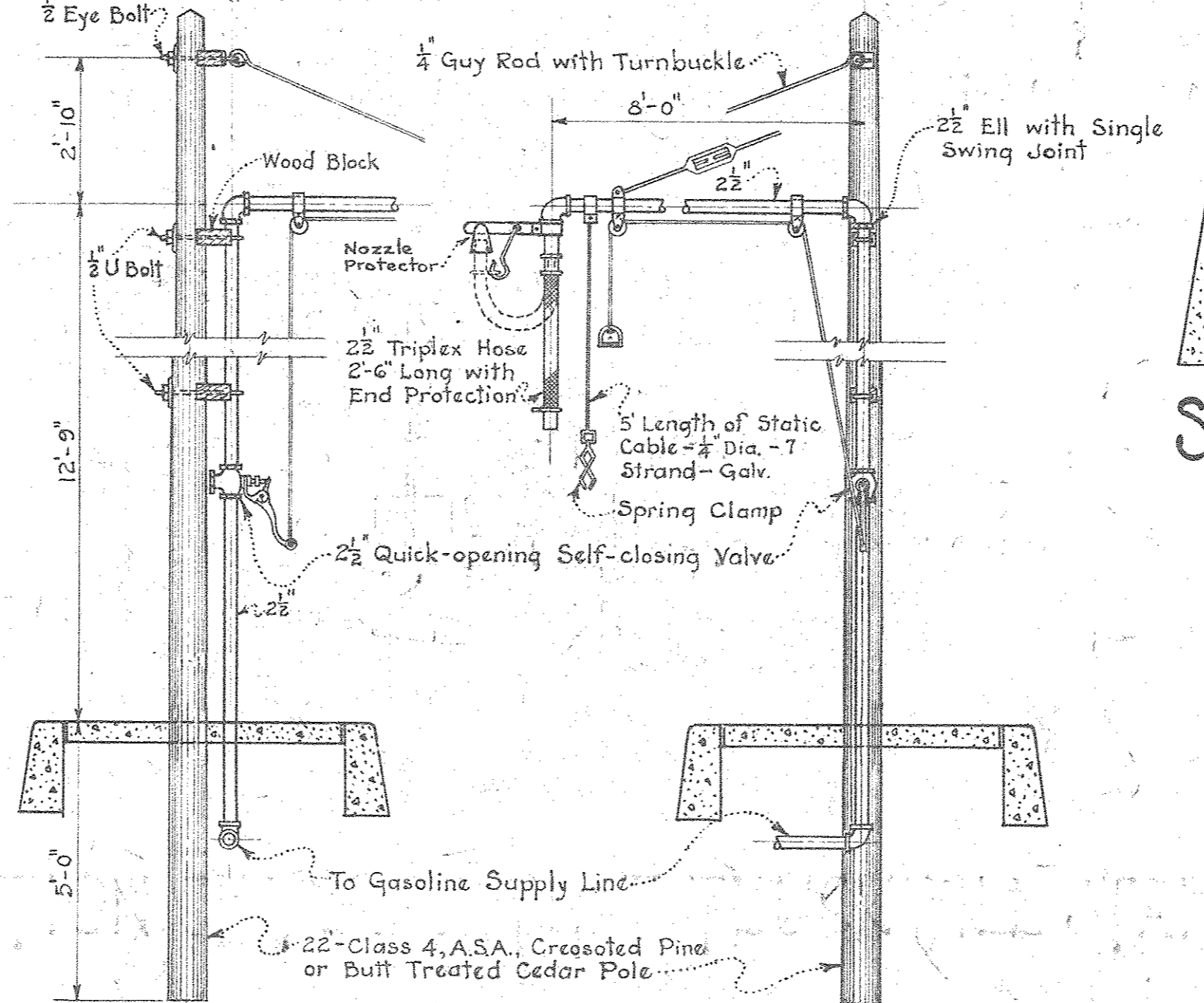
DIAGRAMMATIC LAYOUT AT RAILROAD UNLOADING POINT
Scale 1" = 10'-0"



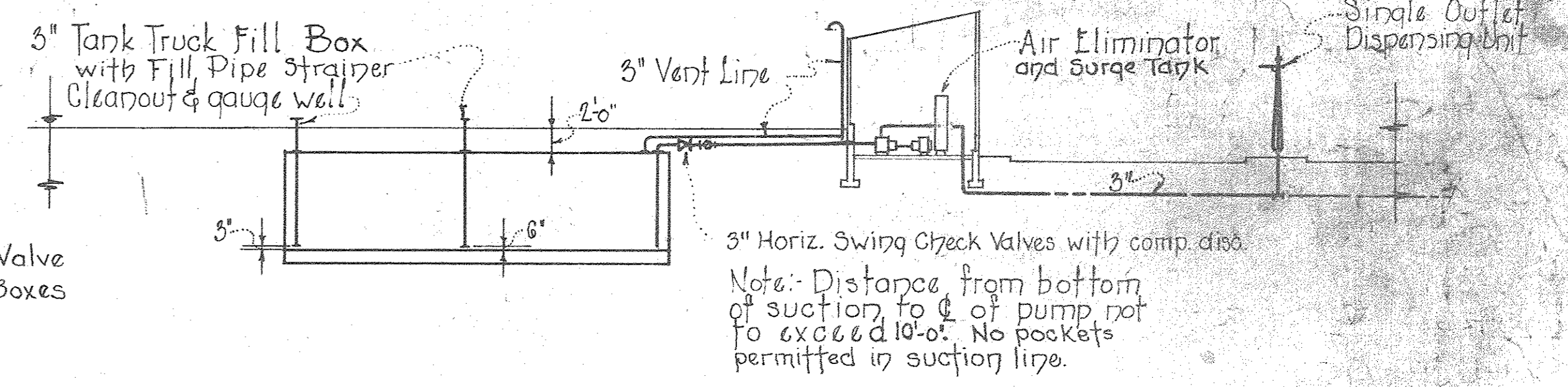
SECTION A-A
Scale 1" = 10'-0"



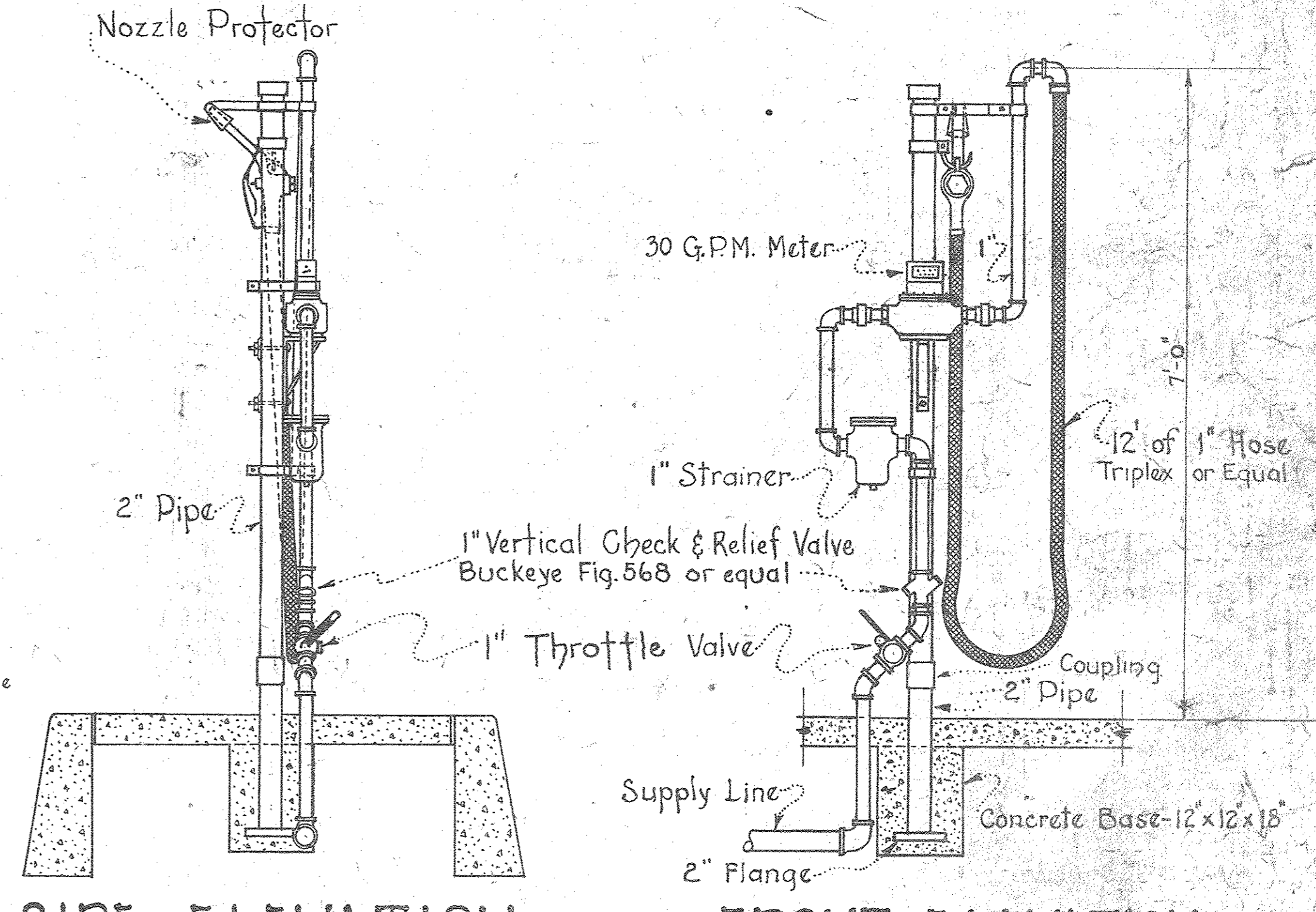
DIAGRAMMATIC LAYOUT OF MULTIPLE OUTLET DISPENSING STATION
Scale 1" = 10'-0"



SIDE ELEVATION FRONT ELEVATION
TRUCK FILL STAND
Scale: 3/8" = 1'-0"



SECTION B-B
Scale 1" = 10'-0"



SIDE ELEVATION FRONT ELEVATION
SINGLE OUTLET DISPENSING UNIT
Scale 3/4" = 1'-0"

SCALE		CONSTRUCTION DIVISION	
As Shown		OFFICE OF THE QUARTERMASTER GENERAL	
REVISIONS		MOBILIZATION TYPICAL LAYOUT PLANS FOR GASOLINE STORAGE & DISPENSING SYSTEMS - DISPENSING UNIT DETAILS	
1/24/41	TRUCK FILL STAND		
7/24/41	SINGLE OUTLET DISPENSING UNIT		
7/24/41	SECTION A-A		
7/24/41	SECTION B-B		
7/24/41	TRUCK FILL STAND		
7/24/41	SINGLE OUTLET DISPENSING UNIT		
7/24/41	SECTION A-A		
DRAWN BY Ohman		CHECKED BY MTSW	APPROVED BY DIRECTOR Robert H. Hill
TRACED BY Ohman		MAJOR	G.M.C.
DATE		DATE	
		Sept. 24, 1941	
PLAN NUMBER		PLAN NUMBER	
		800-616	