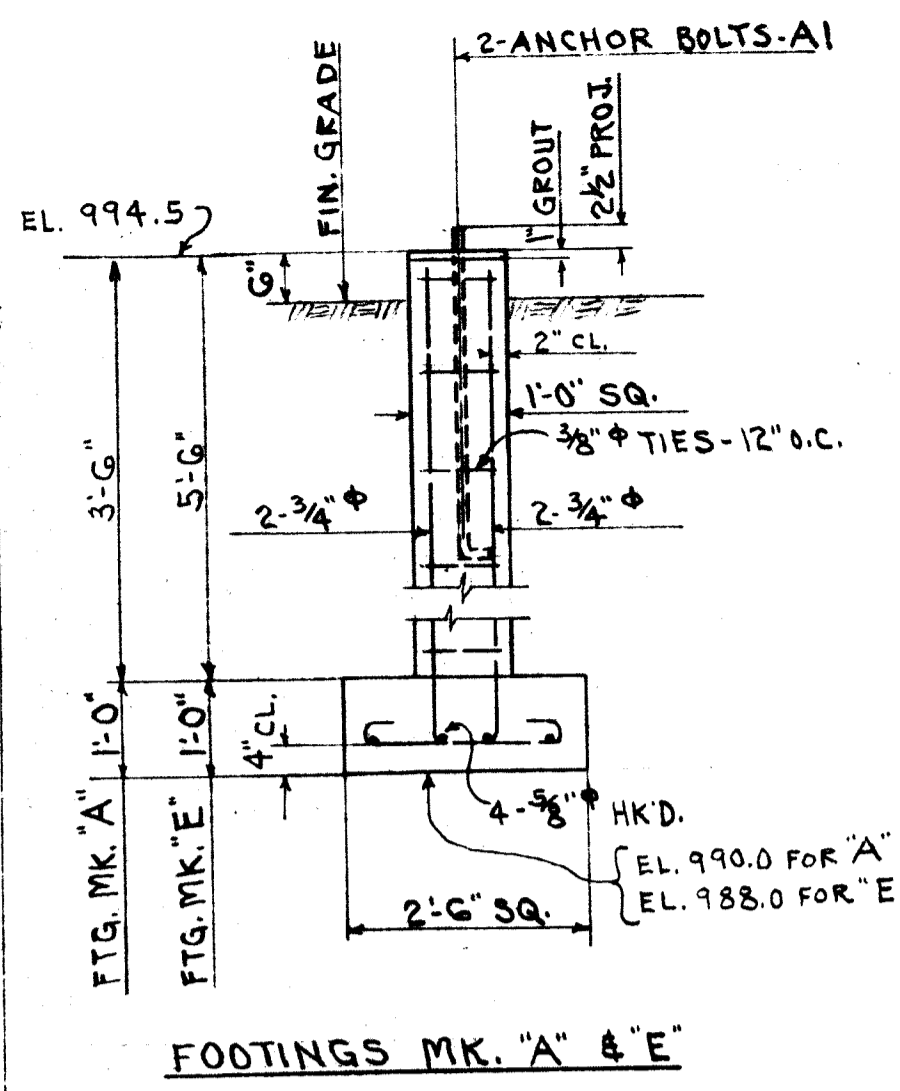
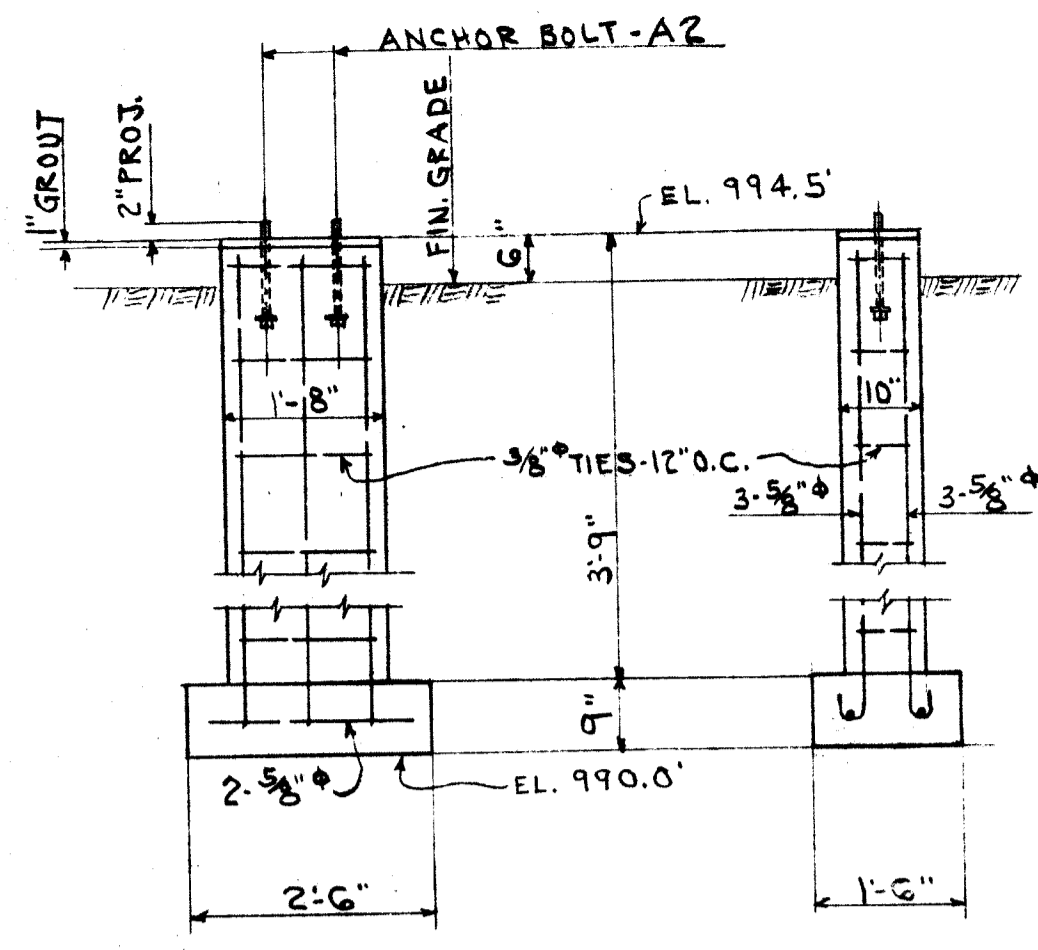


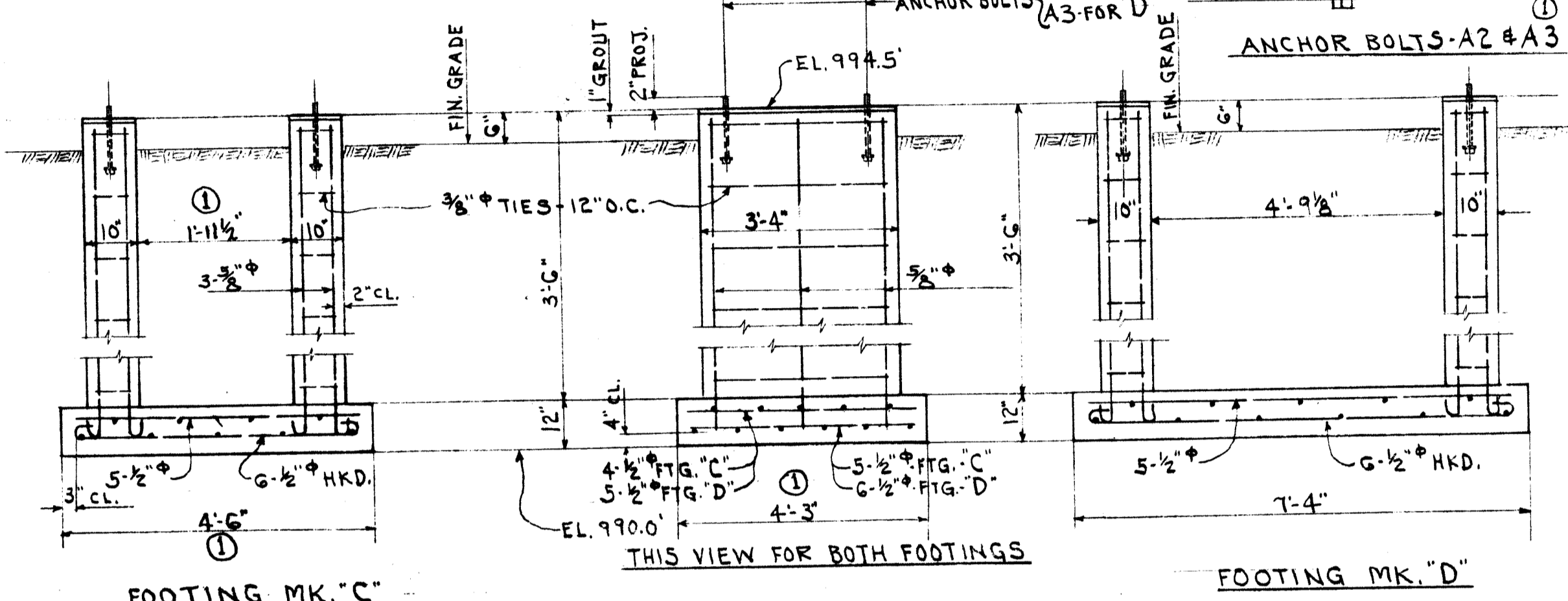
PLAN OF SUB-STATION FOOTINGS & FENCE
SCALE - 3/16" = 1'-0"



FOOTINGS MK. "A" & "E"

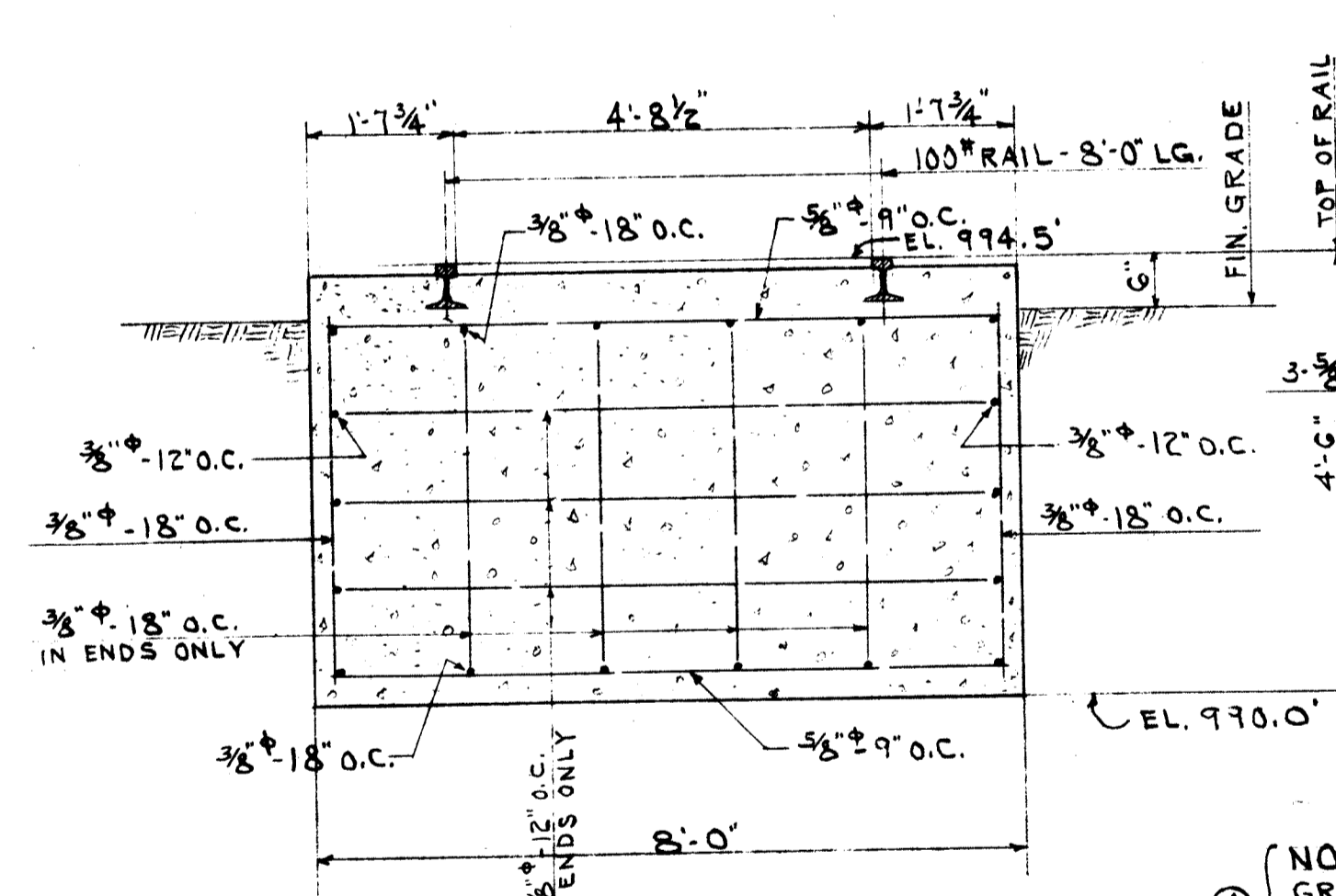


FOOTING-MK. "B"

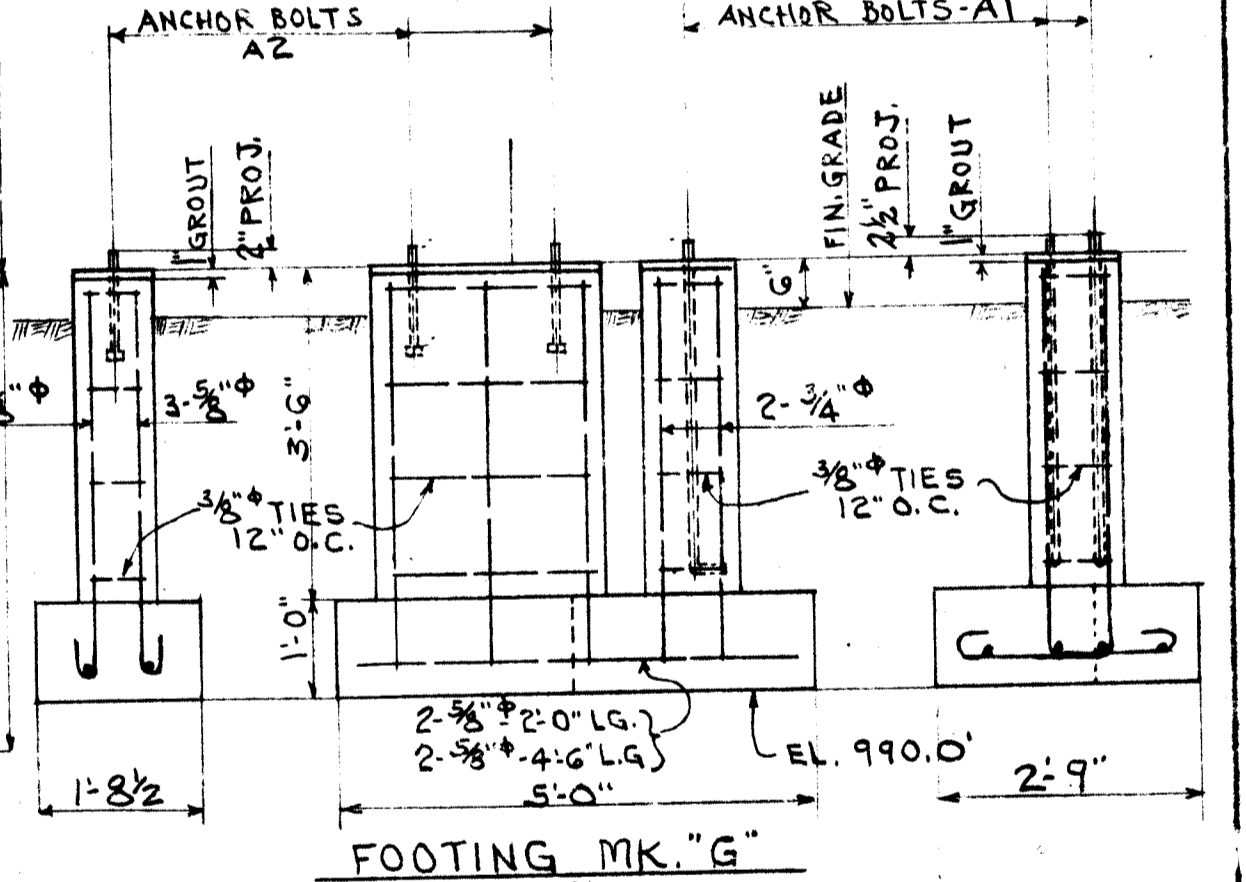


FOOTING MK. "C"

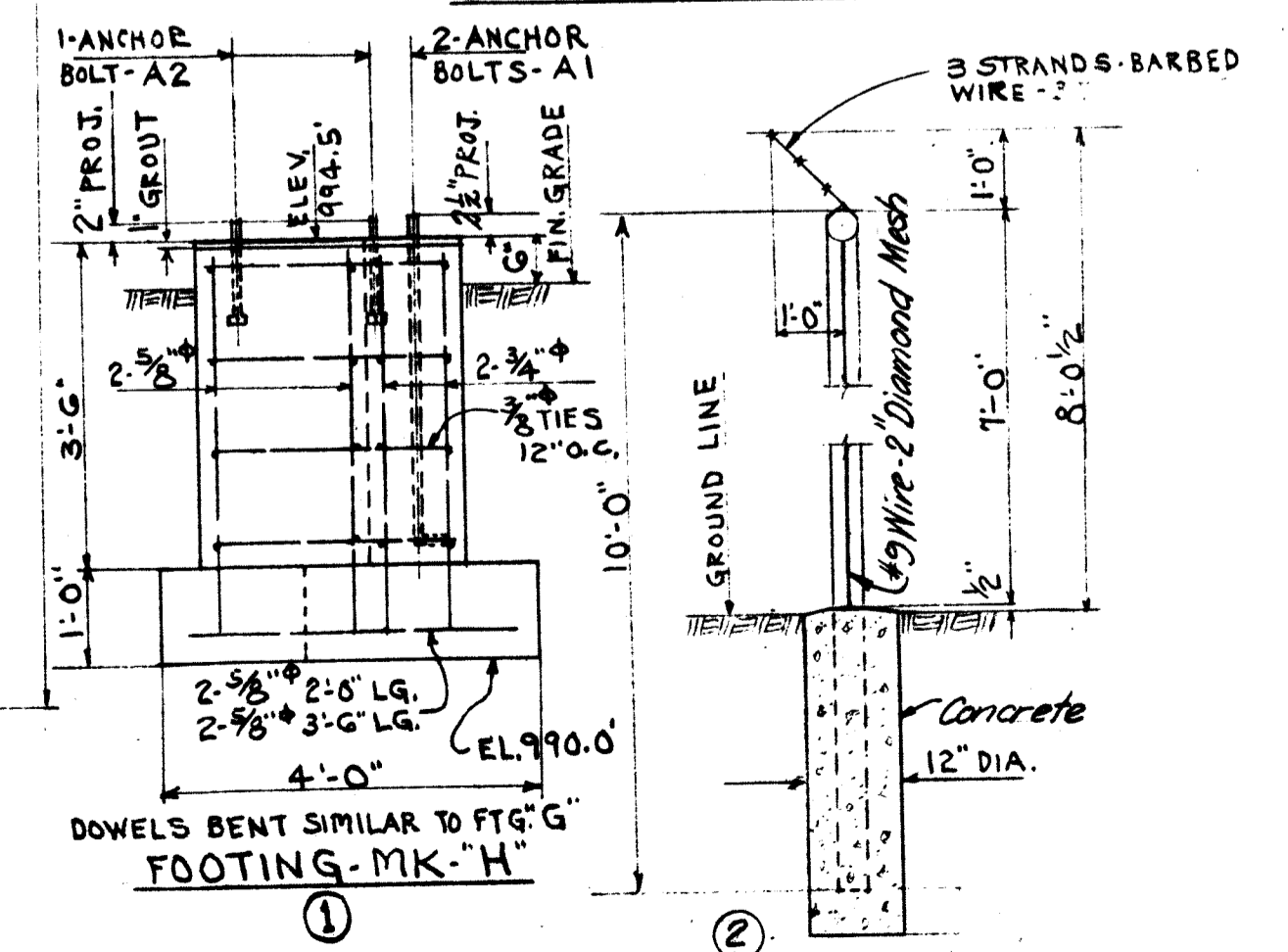
FOOTING MK. "D"



SECTION - FOUNDATION MK. "F"



FOOTING MK. "G"



TYPICAL SECTION THRU FENCE

NOTES
GRADE ENTIRE AREA TO APPROXIMATELY 3 FT. OUTSIDE OF FENCE AND LINE TO ELEV. 993.5; AFTER GROUNDING SYSTEM AND CONDUITS ARE INSTALLED COVER WITH 3" OF 2" TO 3" SLAG AND 3" OF 3/4" SLAG TO A FINISHED GRADE ELEV. OF 994.0.

ANCHOR BOLTS FURNISHED BY WESTINGHOUSE ELEC. & MFG. CO.
REFERENCES -
FOUNDATION PLAN (WESTINGHOUSE ELEC. & MFG. CO.) DRWG. 84 4005
SWITCH HOUSE DRWG. 1A-27

APPROVED: *[Signature]*
ATLAS POWDER COMPANY

WILBUR WATSON AND ASSOCIATES
ARCHITECTS AND ENGINEERS
Cleveland, Ohio
Cleveland, Ohio

SCALE
1/2" = 1'-0" UNLESS NOTED

REVISIONS
① GENERAL
② FENCE FOR 1/4"

CONSTRUCTION DIVISION
OFFICE OF THE QUARTERMASTER GENERAL
RAVENNA ORDNANCE PLANT
EAST SUB-STATION
FOUNDATIONS AND FENCE

DATE
4/2/41
151801

APPROVED BY DIRECTOR
[Signature]
CAPT. ORDN. DEPT.
ACT'G. CONSTRUCTION SUPERVISOR

DRAWN BY
GREINER

CHECKED BY
G. E. SCHUMBERG