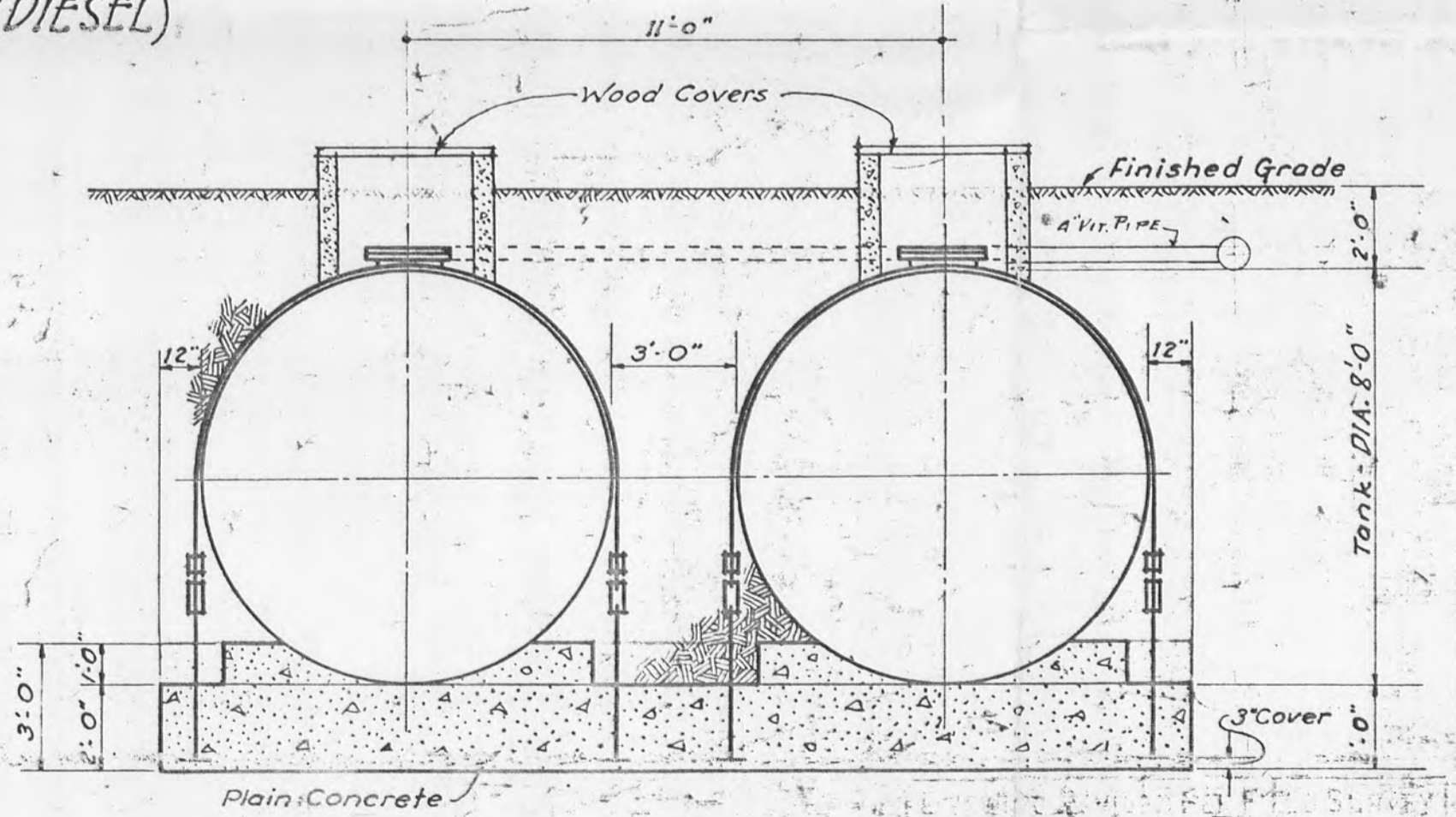
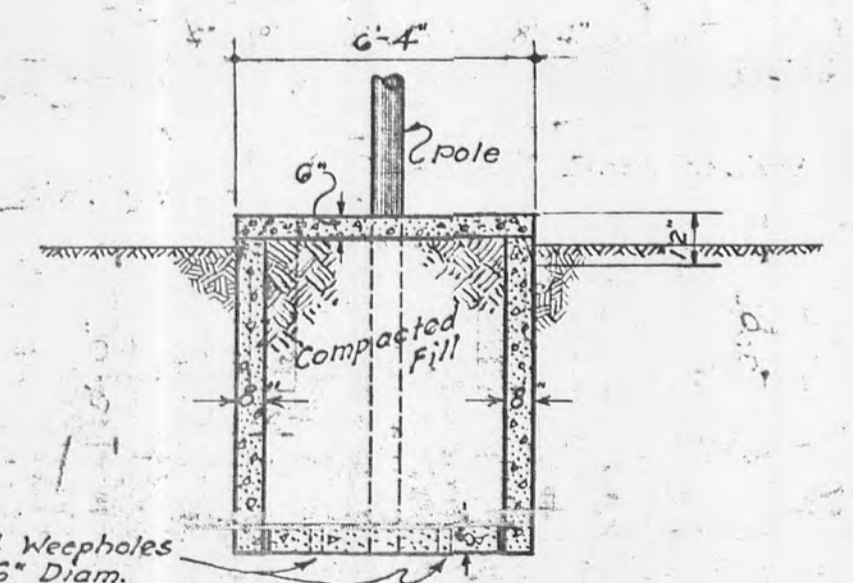
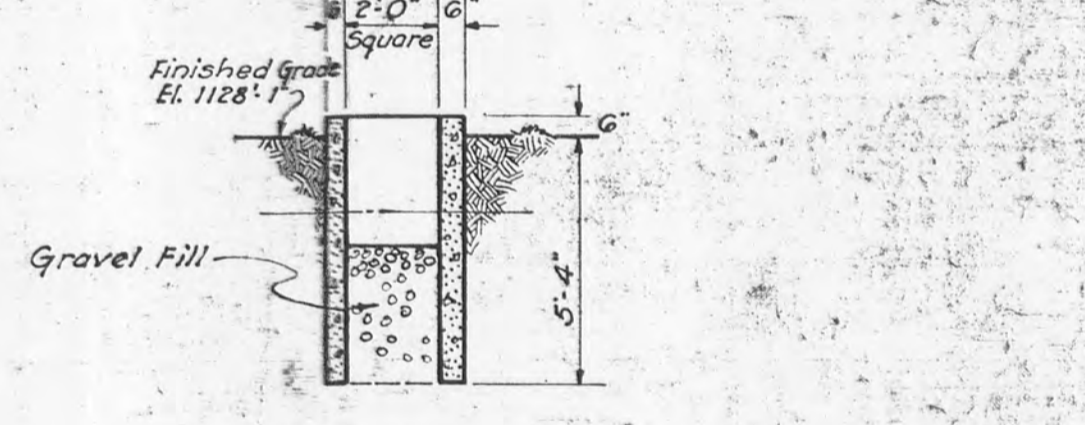
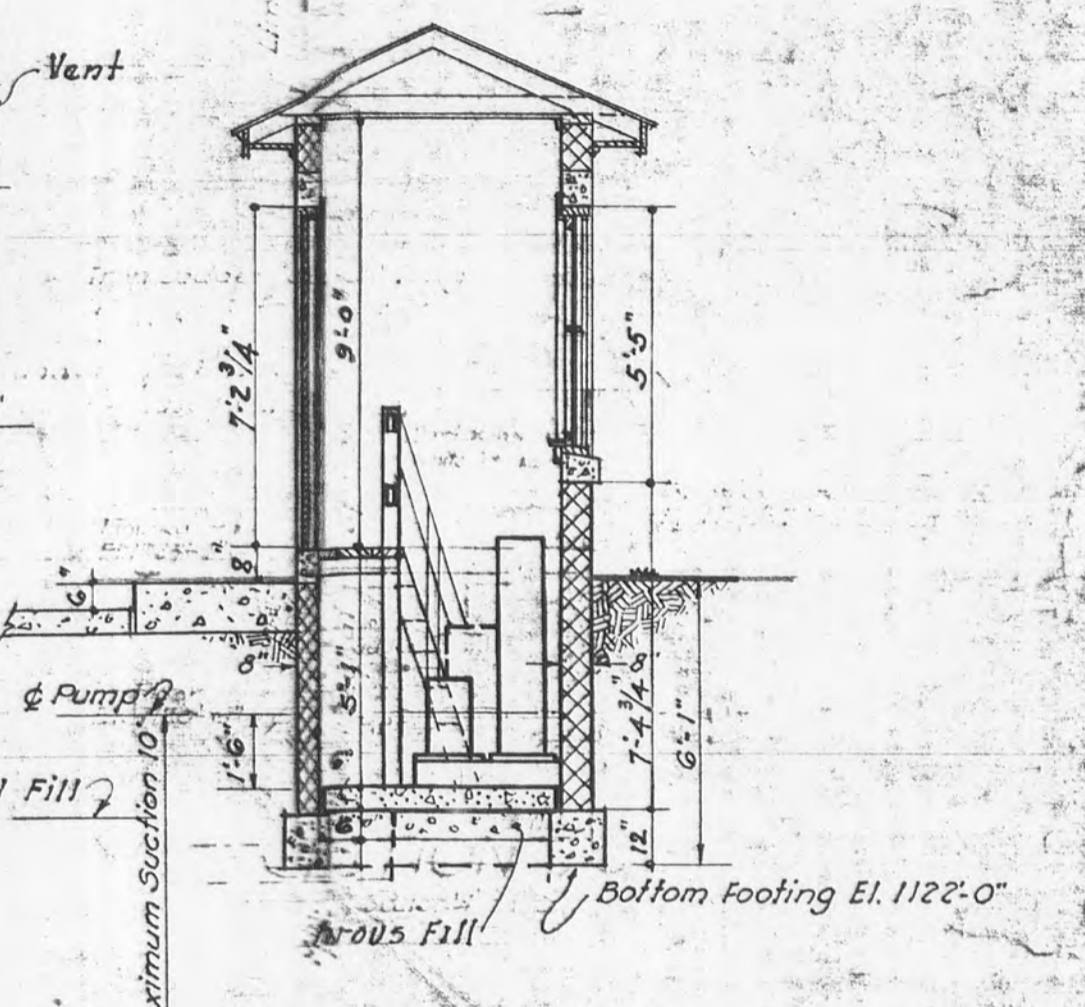
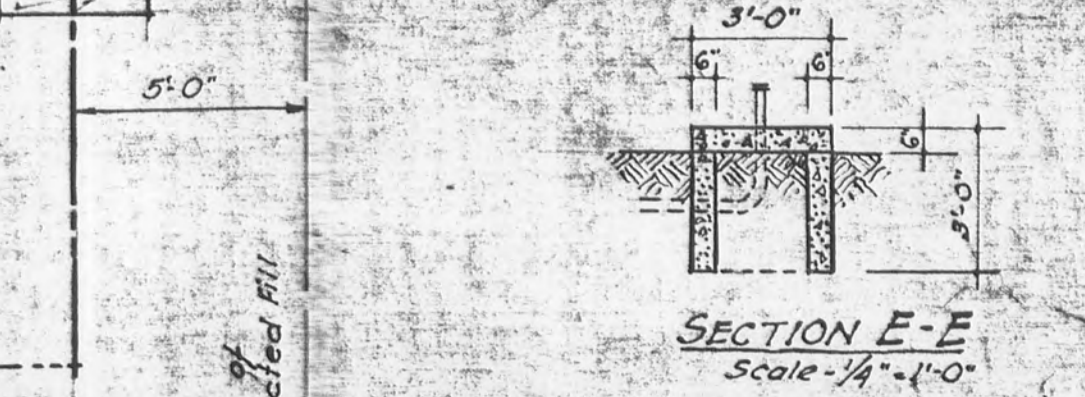


LAYOUT PLAN
MOTOR FUEL STATION (DIESEL)
NOT TO SCALE

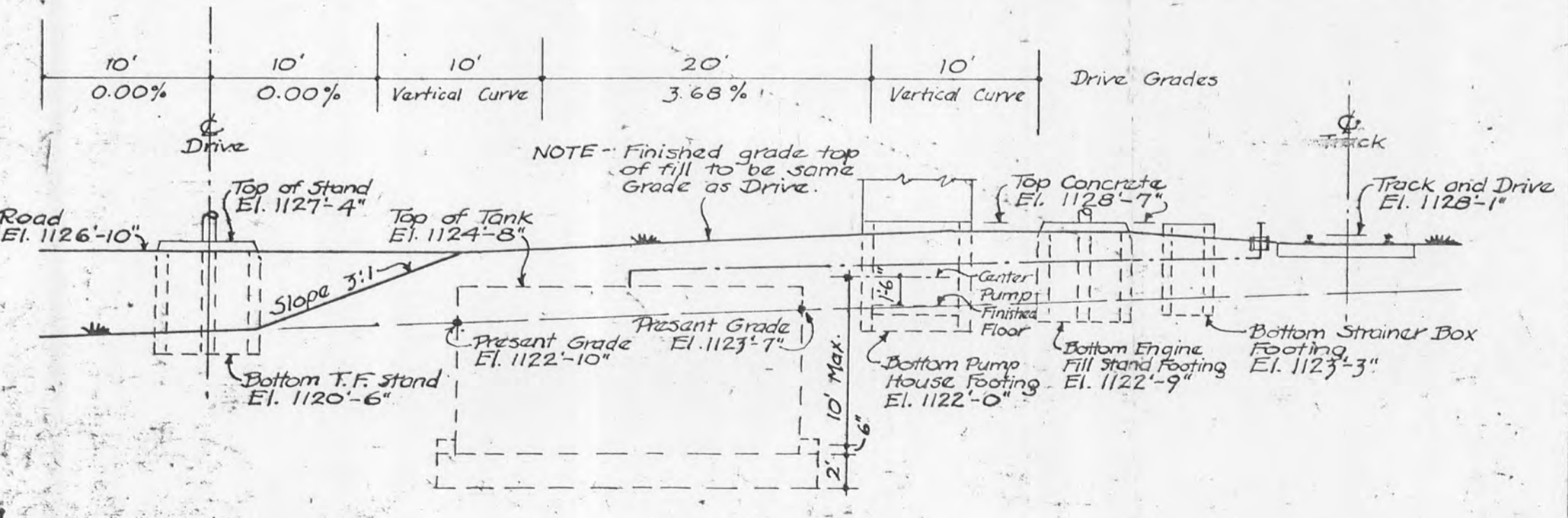


REF: A-2355

SWITCH PANEL & FEEDER SCHEDULE

SERVICE 120/208 V. - 4 wire - 3 φ - 4 #8 wires in 1" conduit
 SERVICE SWITCH 30 Amp 4 pole SN Explosion proof.
 FEEDER TO PANEL 4 #8 wires in 1" Conduit.
 DISTRIBUTION PANEL 60 Amp 120/208 V. Explosion Proof
 2-30 Amp 3 P. Circuit Breaker Branches
 2-30 Amp 3 P. Circuit Breaker Branches

NOTE:-
 All wiring to be rigid conduit.
 Class I Group D hazardous locations.
 For Symbols & Details, see Divg. ALB-36.
 A combination switch and starter may be provided for Pump Control in lieu of above.



DIAGRAMATIC SECTION

SECTION B-B
Scale 1/4" = 1'-0"

SECTION A-A
Not to scale

② Note:- Additional Drawings:
 PLANS, ELEVATIONS, DETAILS - U.S. Engineers Office - File #112-2, as revised by J.L.G.
 STANDARD TANK DETAILS - Construction Division, Off. of C.O.M., Plan No. 800-650
 MOBILIZATION-TYPICAL LAYOUT - Construction Division, Off. of C.O.M., Plan No. 800-616

REVISIONS NO. 2 AND 3 APPROVED BY:
 MARVIN L. KAPPE
 MAJOR ORD. DEPT.
 COMMANDING OFFICER

APPROVED
 L. H. EATON
 PLANT ENGINEER

© BUILDING NO. U-6

THE JENNINGS-LAWRENCE CO.
 ARCHITECT-ENGINEER
 COLUMBUS, O. RAVENNA, O.

CONSTRUCTION DIVISION
 OFFICE OF THE CHIEF OF ENGINEERS

PORTAGE ORDNANCE DEPO
 MOTOR FUEL STATION (DIESEL)
 LAYOUT & FOOTING PLANS - DETAIL

SCALE
 As Shown

REVISIONS
 ① 4-14-49 SW
 ② 5-10-49 SW
 ③ 5-10-49 SW
 ④ 5-10-49 SW

DATE
 June 27, 1949

PLAN NUMBER
 6988-60