

Figure 283. Building 6-D-2: Igloo Storage.



Figure 284. Building U-14: Dunnage Building.



Figure 216. Building U-3: Gas Station Building.

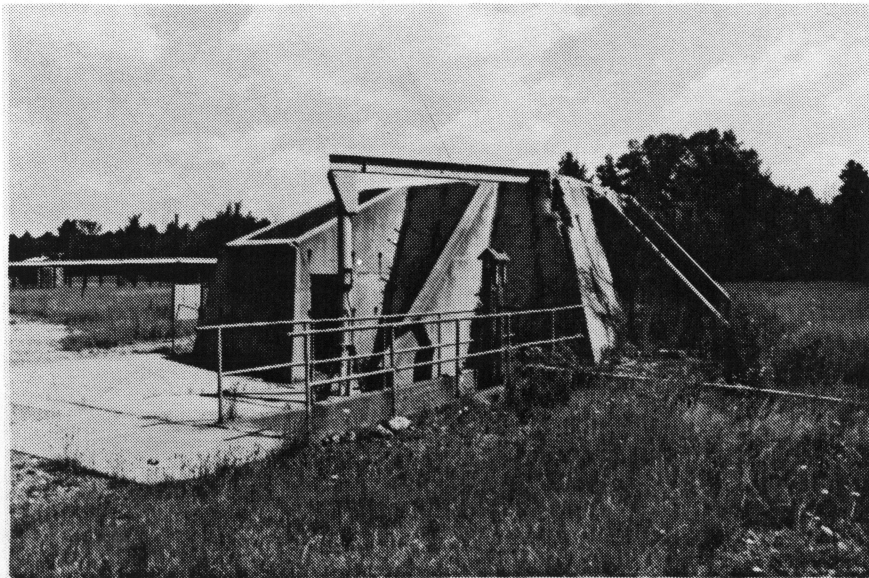


Figure 217. No Building Number: Blast Chamber.



Figure 219. Building U-4: General Purpose Maintenance Shop.



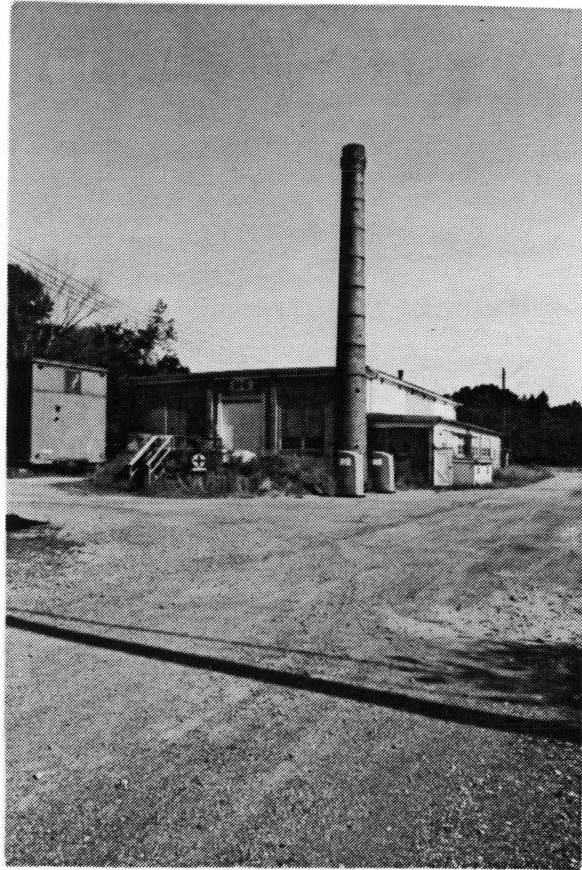


Figure 220. Building U-5: General Purpose Maintenance Shop.



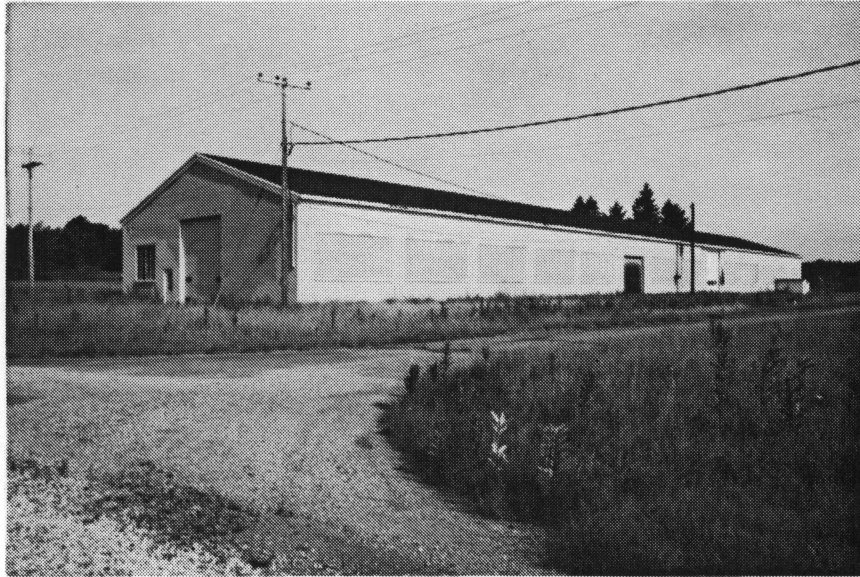


Figure 226. Building U-7: Continuous Humidity Warehouse.

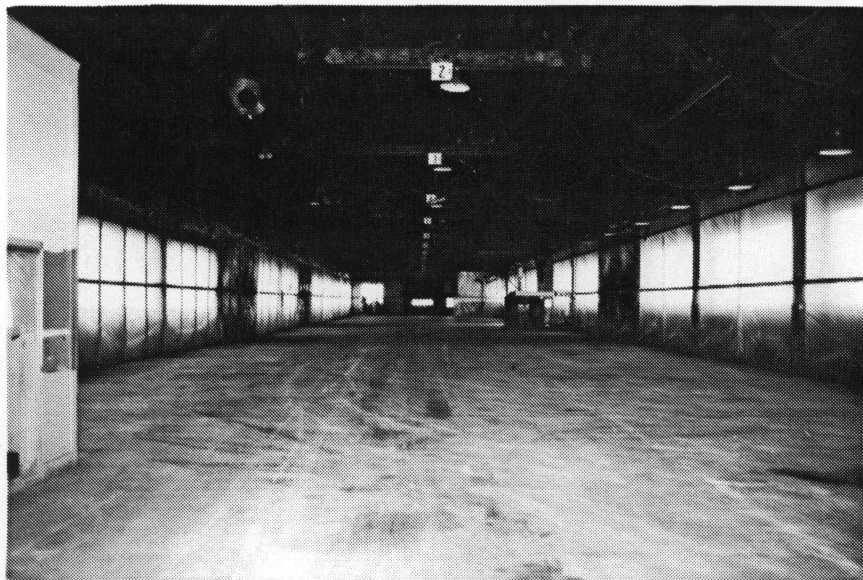


Figure 227. Building U-7: Interior view of this Continuous Humidity Warehouse.

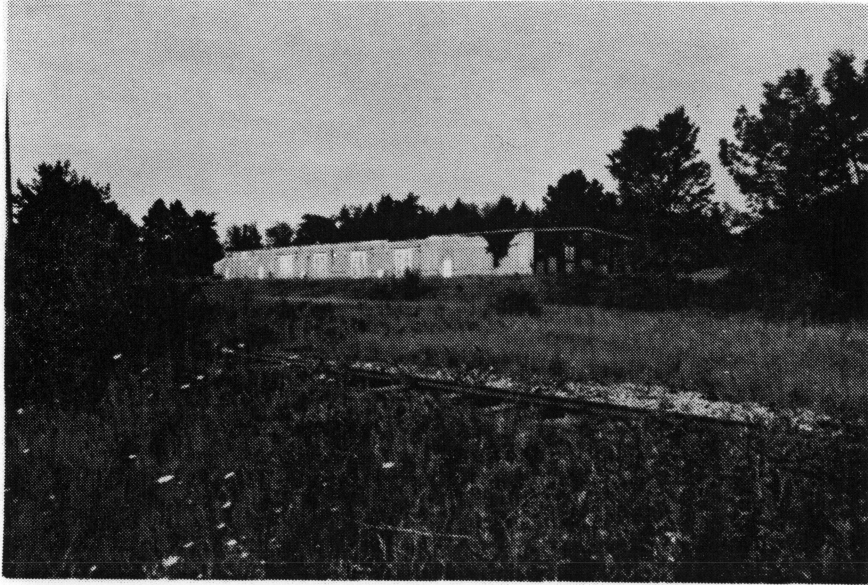


Figure 228. Building U-10: General Purpose Warehouse.

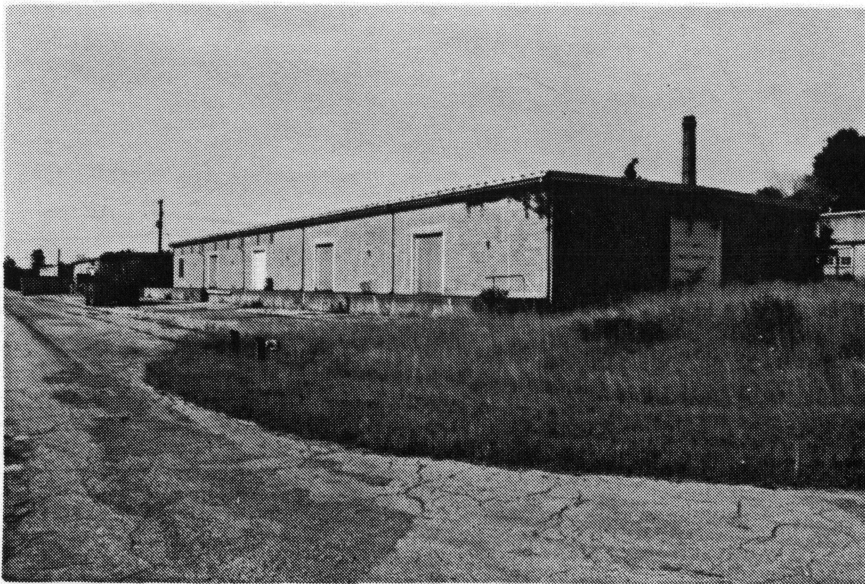


Figure 229. Building 1W-3: General Purpose Warehouse.

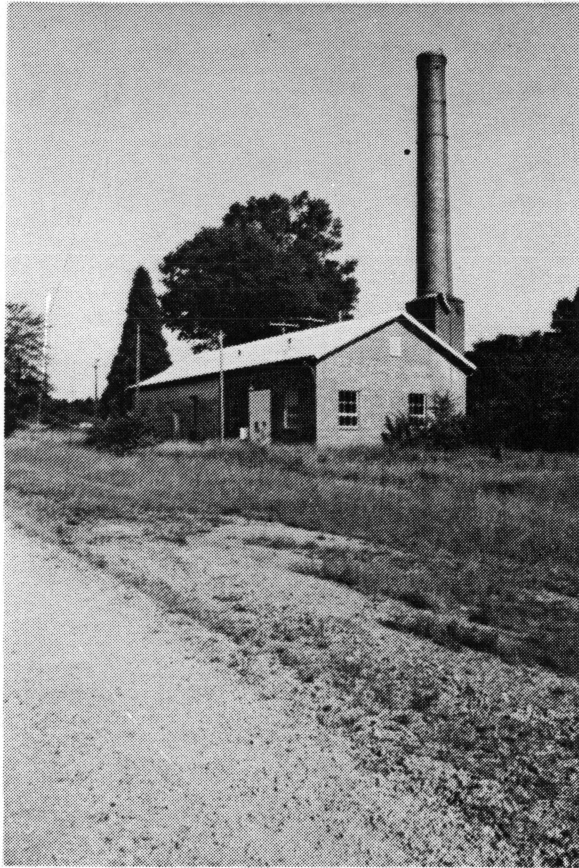


Figure 313. Building A-1: Telephone Exchange Building. This is one of two remaining structures from the original Bolton Farm that pre-dated the plant's construction.