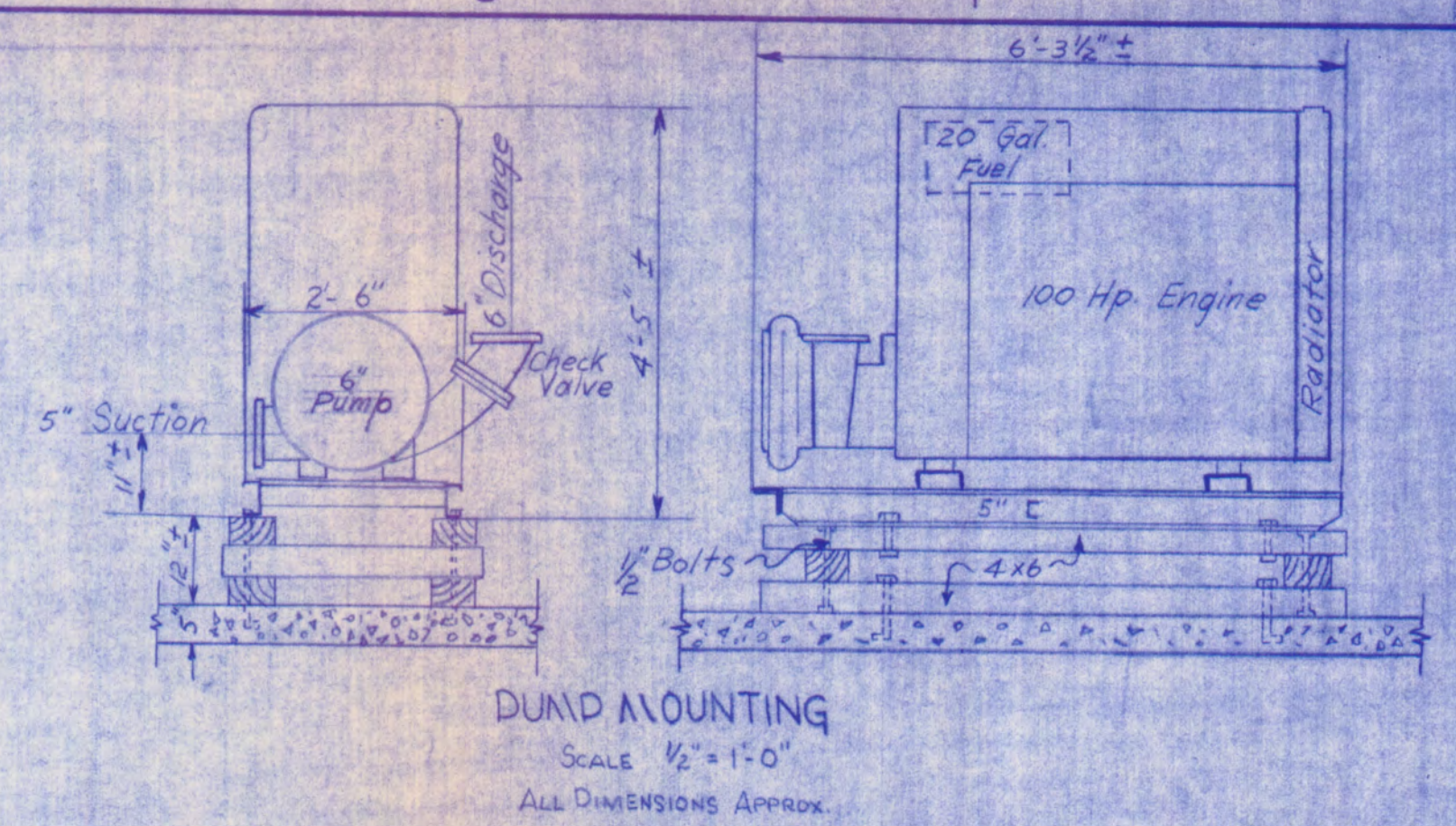
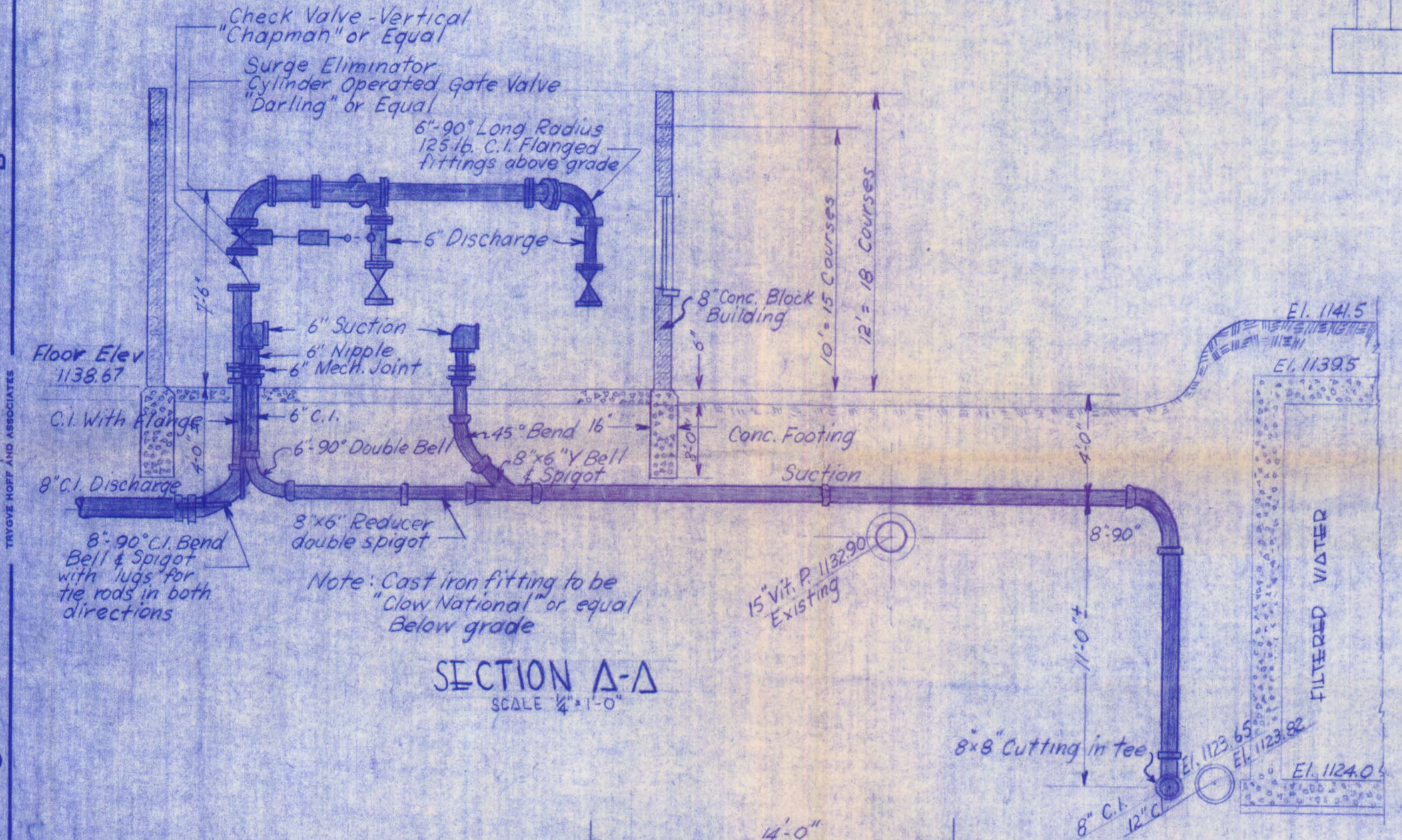


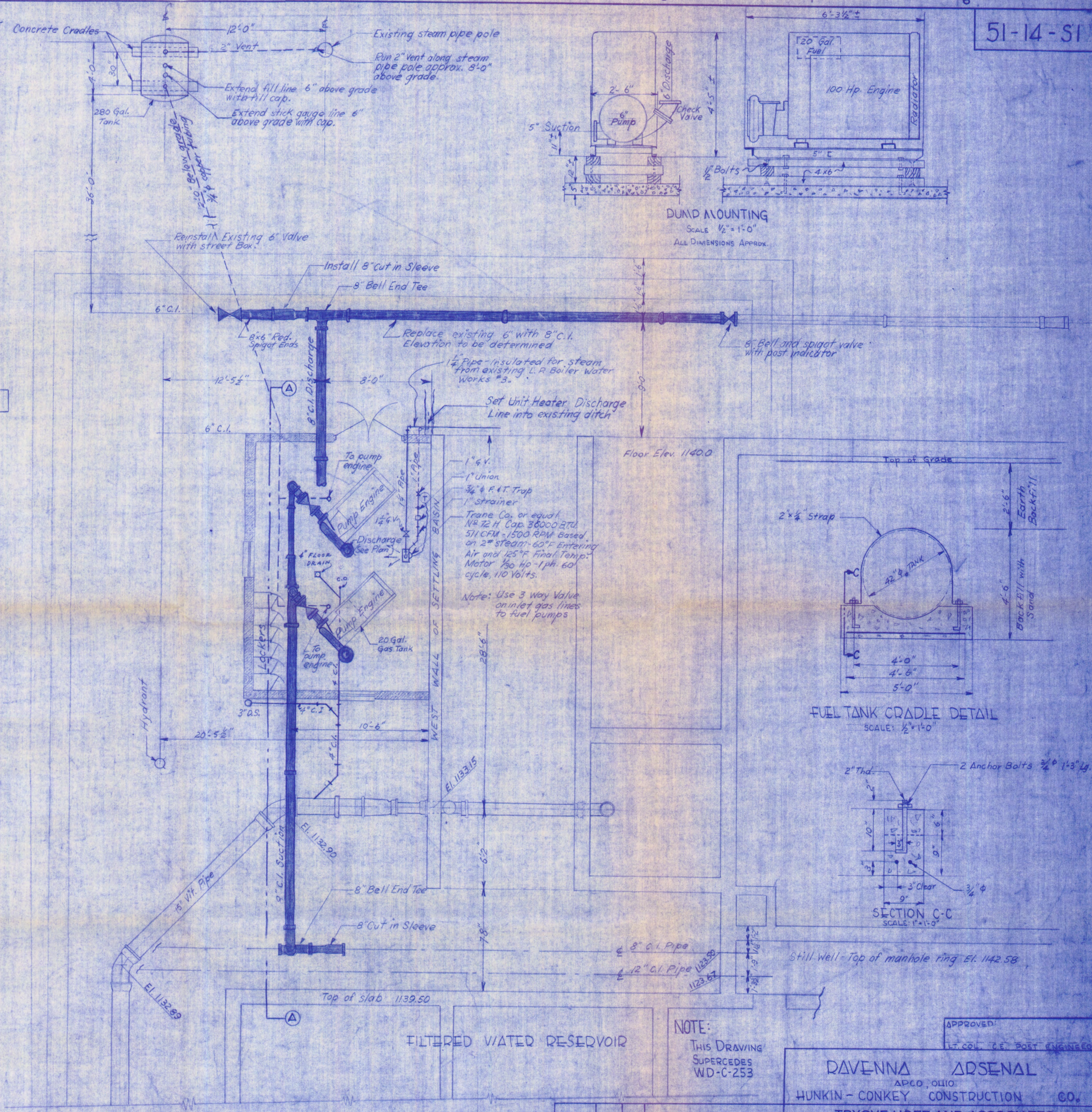
SECTION B-B
SCALE 1/2"=1'-0"



DUMP MOUNTING
SCALE 1/2"=1'-0"
ALL DIMENSIONS APPROX.

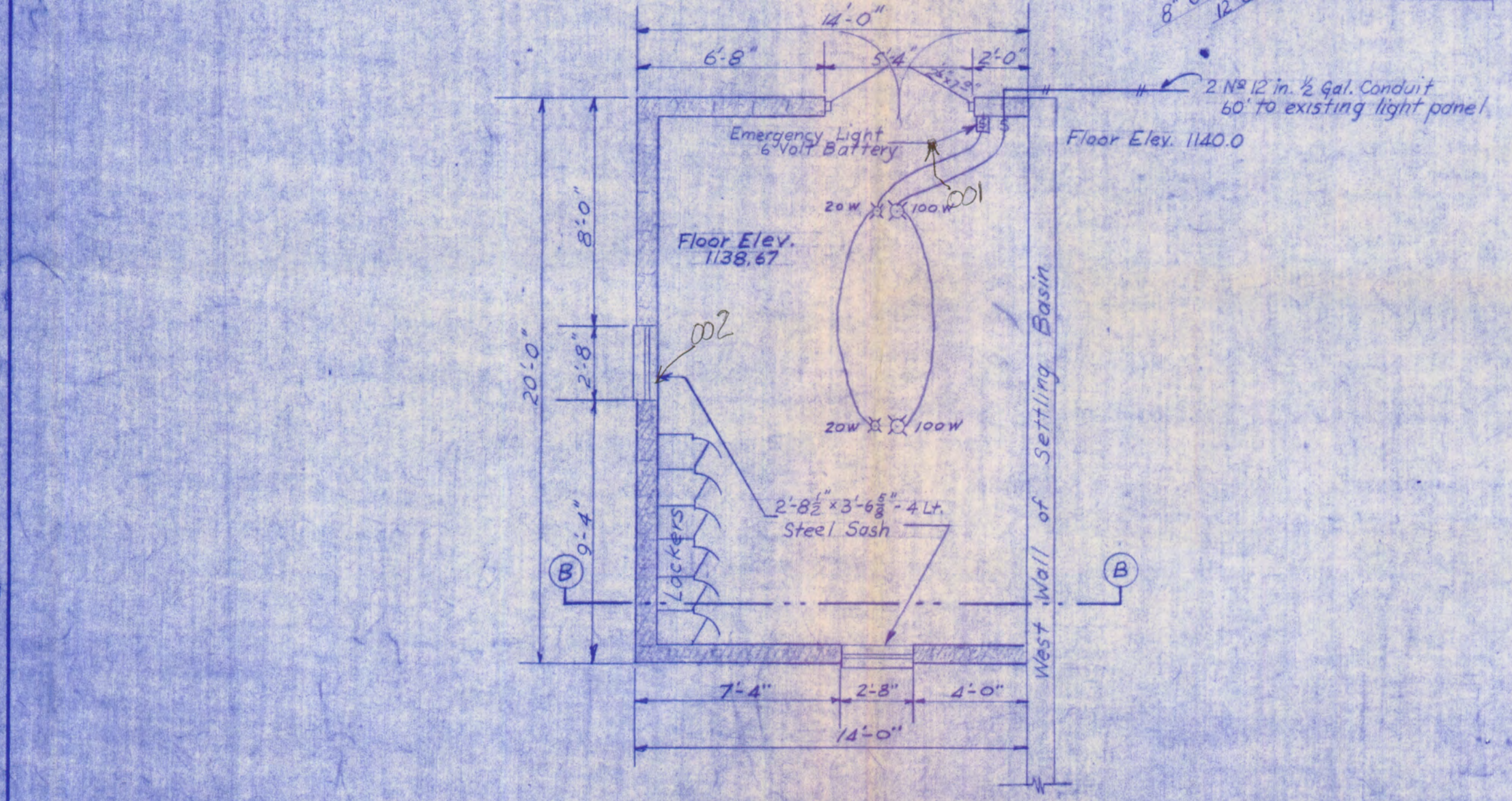


SECTION A-A
SCALE 1/2"=1'-0"

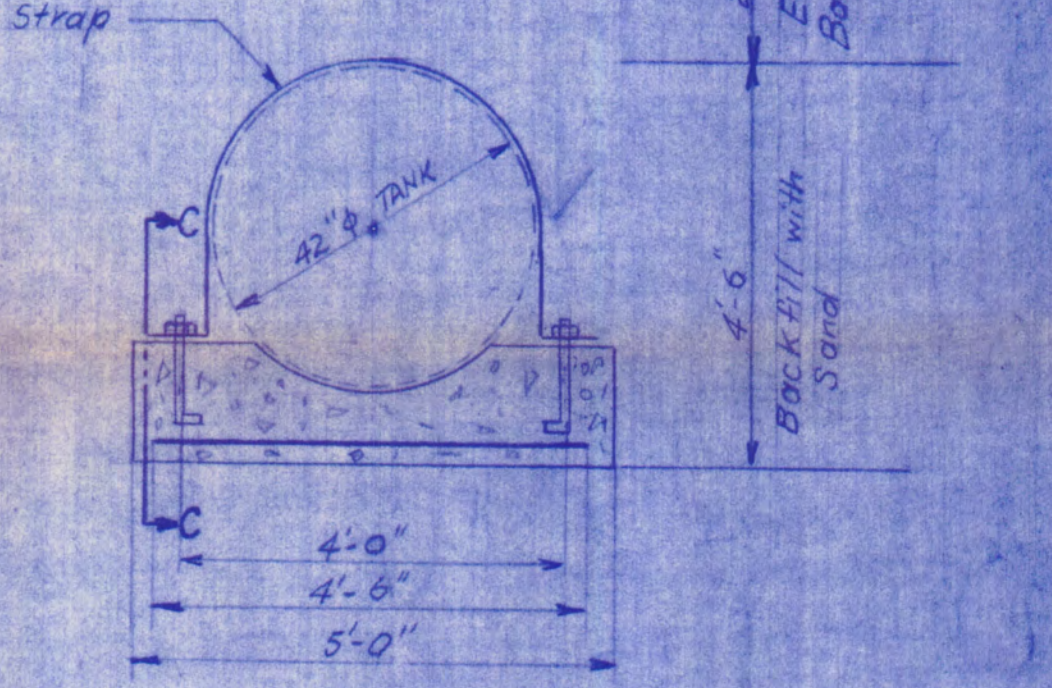


PIPING PLAN
SCALE: 1/4"=1'-0"

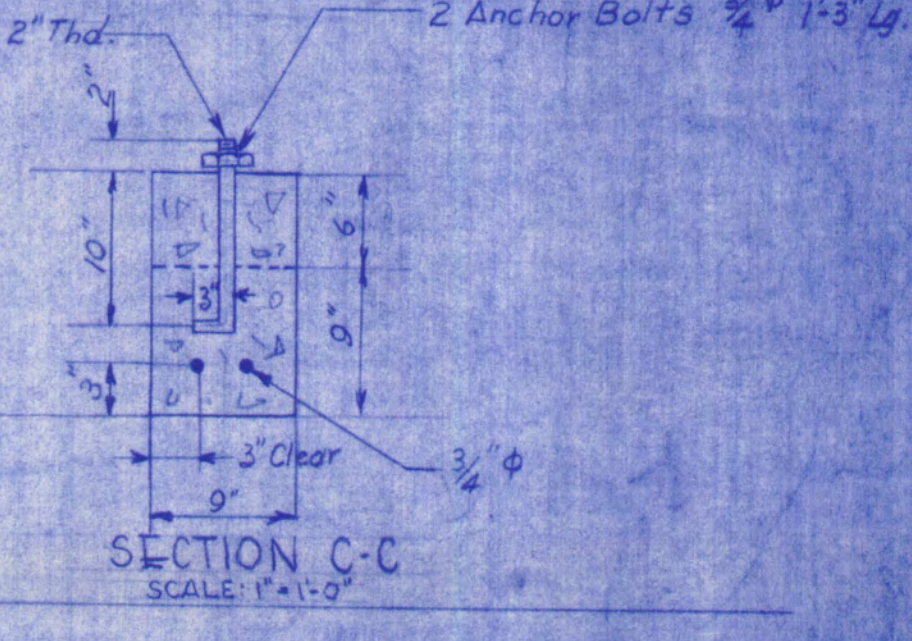
Note: New piping indicated by shading.



BUILDING PLAN
SCALE 1/4"=1'-0"



FUEL TANK CRADLE DETAIL
SCALE: 1/2"=1'-0"



SECTION C-C
SCALE: 1"=1'-0"

DRAWING REVISED BY FIELD SURVEY
DATE JULY 20 - 1955
BY ACT. NO. DA 173 - P.D.O. - 6
TRYGVE HOFF & ASSOCIATES
REV. BY LAC. CHECKED BY AFM

NOTE:
THIS DRAWING
SUPERCEDES
WD-C-253

APPROVED:
LT. COL. G.E. POST ENGINEER

RAVENNA ARSENAL
APCO, OHIO
HUNKIN-CONKEY CONSTRUCTION CO.

TRYGVE HOFF AND ASSOCIATES
4500 EUCLID AVE. CLEVELAND, OHIO
ADDITION TO WATER WORKS No. 3
FOR 1000 GPM GASOLINE DRIVEN PUMPS
PLANS, SECTIONS, DETAILS, PIPING AND ELECTRICAL

DESIGNED BY GP CHECKED BY J.F. APPROVED BY
DATE 6-20-51 CONTRACT NO. 1147-320

DATE	CHANGE	ITEM	DESCRIPTION
7/20/55	1	GENERAL	BY T. HOFF & ASSOCIATES