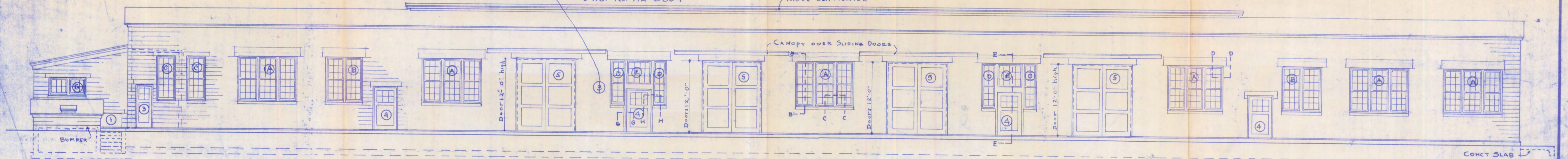


* FIRST FLOOR PLAN - CARPENTER SHOP, SHOOK STORAGE & CRATE ASSEMBLY. SCALE 1/8" = 1'-0"

REFER TO ATLAS POWDER CO. DWG. No. AR-5394



* EAST ELEVATION, CARPENTER SHOP, SHOOK STORAGE & CRATE ASSEMBLY. SCALE 1/8" = 1'-0"

* WINDOW LINTEL & SILL SCHEDULE

DESIGNATION	OPENING WIDTH	SIZE OF LINTEL	NO. - SIZE & LGTH OF	LGTH OF SILL	NO. - SIZE & LGTH OF
A	10'-2"	8" x 16"	2 - 5/8" x 11'-2"	10'-2"	2 - 1/2" x 10'-0"
B	6'-9"	8" x 16"	2 - 5/8" x 7'-9"	6'-9"	2 - 1/2" x 6'-8"
C	3'-4"	8" x 8"	2 - 1/2" x 4'-4"	3'-4"	2 - 1/2" x 3'-3"
D-E-D	10'-2"	8" x 16"	2 - 5/8" x 11'-2"	2-2'-6"	2 - 1/2" x 10'-0"
F	6'-9"	8" x 16"	2 - 5/8" x 7'-9"	6'-9"	2 - 1/2" x 6'-8"
DOUBLE LOUVER	4'-0"	8" x 8"	2 - 1/2" x 5'-0"	4'-0"	2 - 1/2" x 3'-11"
SINGLE LOUVER	1'-6"	8" x 8"	2 - 1/2" x 2'-6"	1'-6"	2 - 1/2" x 1'-8"
G	6'-9"	8" x 8"	2 - 5/8" x 7'-9"	6'-9"	2 - 1/2" x 6'-8"

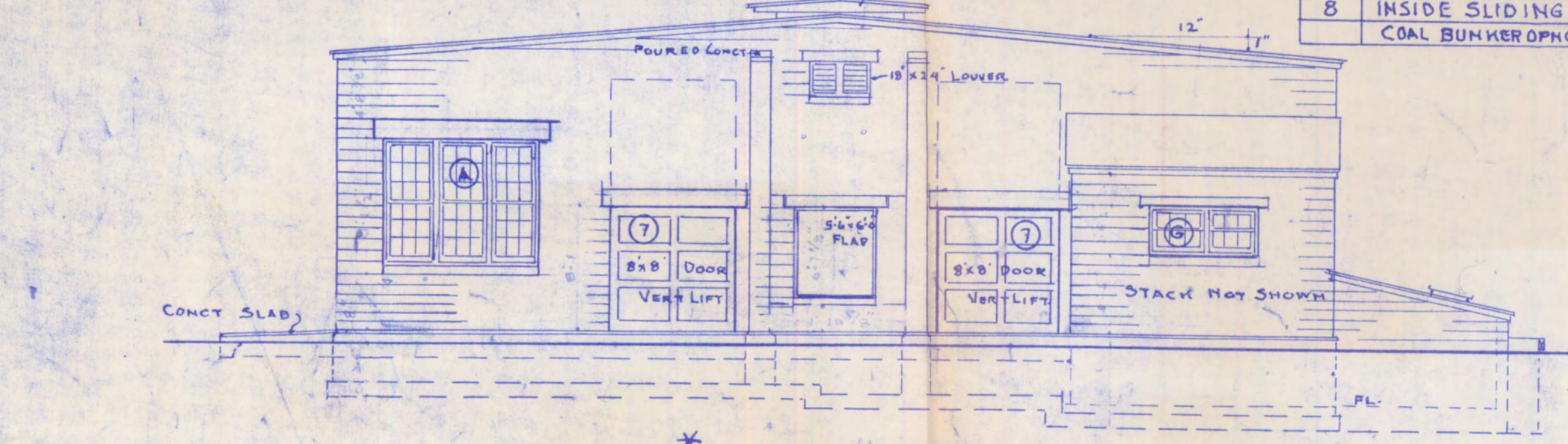
* LINTEL SCHEDULE OF DOORS

TYPE	OPENING WIDTH	SIZE LINTEL	NO. - SIZE & LGTH
1	3'-8"	8" x 8"	2 - 1/2" x 4'-8"
2	2'-10"	8" x 8"	2 - 1/2" x 3'-9"
3	2'-10"	8" x 8"	2 - 1/2" x 3'-9"
4	4'-4"	8" x 8"	2 - 1/2" x 5'-2"
5	10'-0"	8" x 16"	2 - 5/8" x 11'-2"
6	6'-0"	8" x 8"	2 - 1/2" x 7'-2"
7	8'-0"	8" x 16"	2 - 5/8" x 9'-2"
FLAPS 5'-6" x 4'-0" 8" x 8" SEE SILL WINDOW "F."			
FLAPS 4'-0" x 4'-0" 8" x 8" 2 - 1/2" x 5'-4"			
8	INSIDE SLIDING	8" x 16"	2 - 5/8" x 9'-2"
COAL BUNKER OPNG 8" x 8" 3 - 5/8" x 3'-0"			

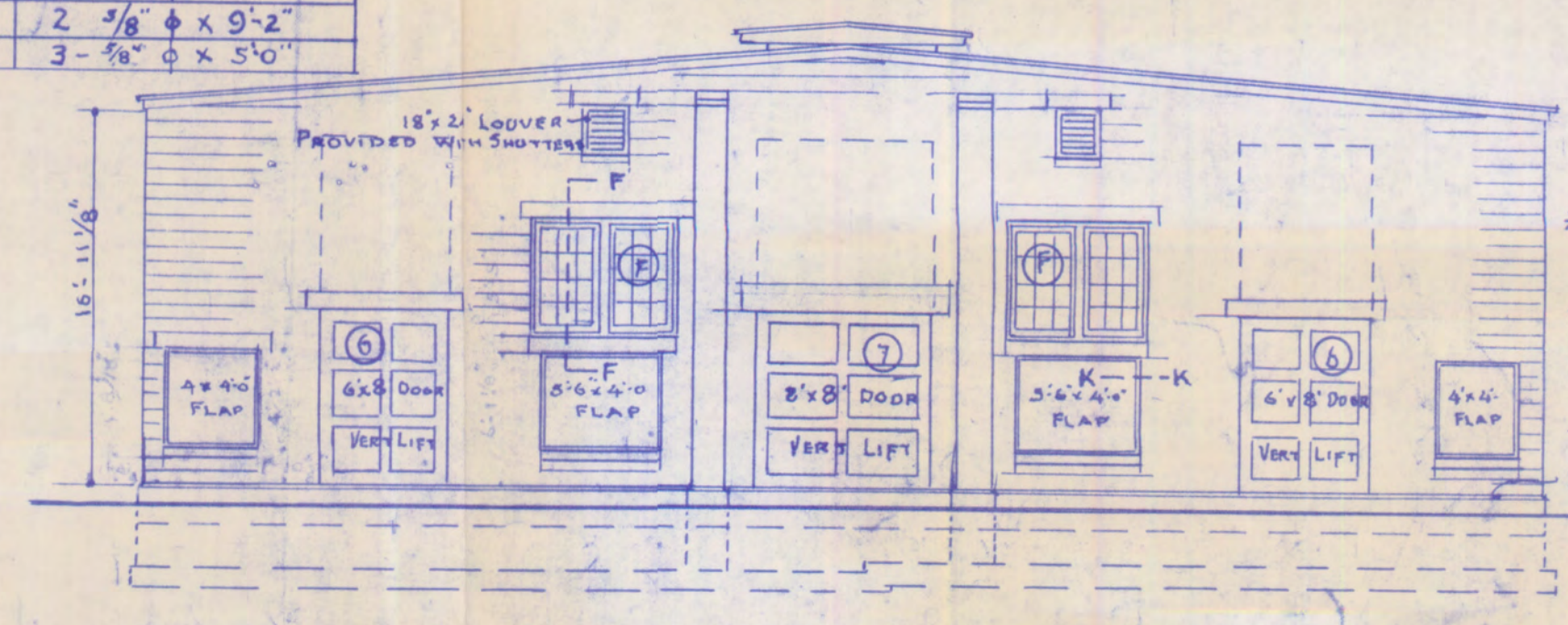
DOOR SCHEDULE

TYPE	SIZE	DESCRIPTION	SIZE	HARDWARE
1	4'-4" x 7'-4"	METAL CLAD	2 1/4"	LAP TYPE
2	2'-6" x 7'-0"	2-PANEL PINE	1 3/4"	REGULAR
3	2'-6" x 7'-0"	GLAZED-4LTS. PANEL BELOW	1 3/4"	REGULAR
4	4'-0" x 7'-0"	GLAZED-GLTS. PANEL BELOW	1 3/4"	REGULAR
5	2 @ 5'-0" x 12'-0"	OUTSIDE SLIDING-IN PAIRS-PANELED	2 1/4"	OVERHEAD TRACK TROLLEY & FLOOR ROLLERS
6	6'-0" x 8'-0"	VERTICAL LIFT-PANELED	2 1/4"	GUIDES & COUNTER BALANCE
7	8'-0" x 8'-0"	VERTICAL LIFT-PANELED	2 1/4"	GUIDES & COUNTER BALANCE
* 8	8'-0" x 8'-0"	INSIDE SLIDING	1 1/4"	REGULAR

Note: Type B Added to Door Schedule



* SOUTH ELEVATION * CARPENTER SHOP, SHOOK STORAGE & CRATE ASSEMBLY. SCALE 1/8" = 1'-0"



* NORTH ELEVATION

NOTES:
 * 1. Window LinTEL & Sill Schedule, LinTEL Schedule of Doors, & Type B of Door Schedule Added.
 * 2. Window @ Boiler Room Added.
 * 3. Overide wall dimensions adjacent to office changed to allow proper jamb clearance between Door @ & Window @.
 * 4. Proper identification of floor plan, platform & elevations added.

DATE August 14th, 1956
 CONTRACT NO. DD-117, DD-65
 INTDGE. HOFF & ASSOCIATES
 BY: K.C. CHUBBEN
 APPROVED BY: MARVIN L. KAUFER (SIGNED)
 MARVIN L. KAUFER
 MAJOR-ORDNANCE DEPT.
 COMMANDING OFFICER

REVISIONS NO. 2, 3 AND 4 APPROVED BY:
 L. H. EATON - PLANT ENGINEER
 C. H. WILLISTON - ASST. GENL. MGR.
 C. W. MELDRUM - LT. COL. OPD. DEPT. COMMANDING

THE JENNINGS-LAWRENCE CO.
 ARCHITECT-ENGINEER
 COLUMBUS, O. RAVENNA, O.

CONSTRUCTION DIVISION
 OFFICE OF THE CHIEF OF ENGINEERS

SCALE 1/8" = 1'-0"

REVISIONS
 * Nov 2, 1952 TRB
 * OLSG. 10/17/54
 * SEE DWG. 2/1/54
 * OFFICE 2/1/54
 * 1/25/54 CHANGE

PORTAGE ORDNANCE DEPOT
 CARPENTER SHOP - SHOOK STORAGE & CRATE ASSEMBLY BUILDING
 FLOOR PLAN & ELEVATIONS

DRAWN BY: L.W.H.
 CHECKED BY: L.W.H.
 APPROVED BY: F. E. SMITH (SIGNED)
 DATE: SEPT. 30, 1952
 PLAN NUMBER: 6988-638