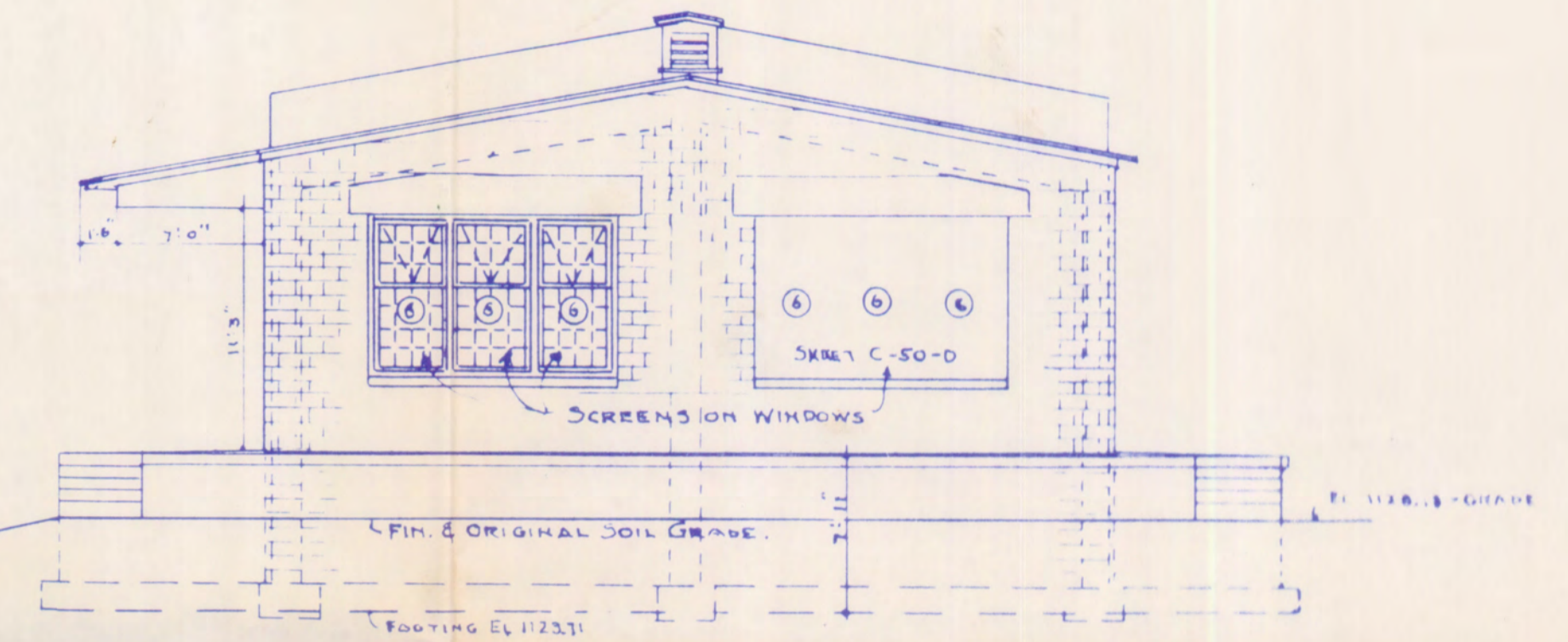
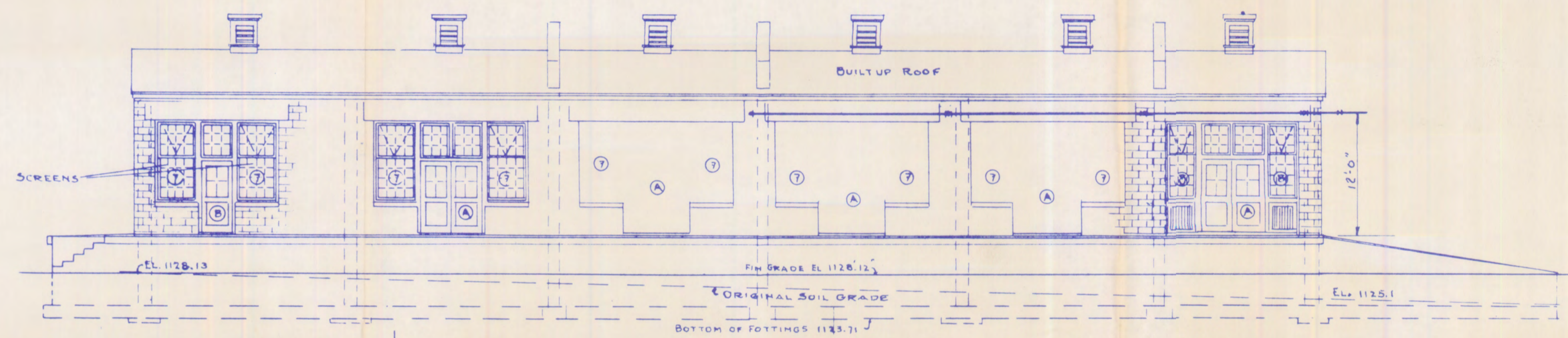


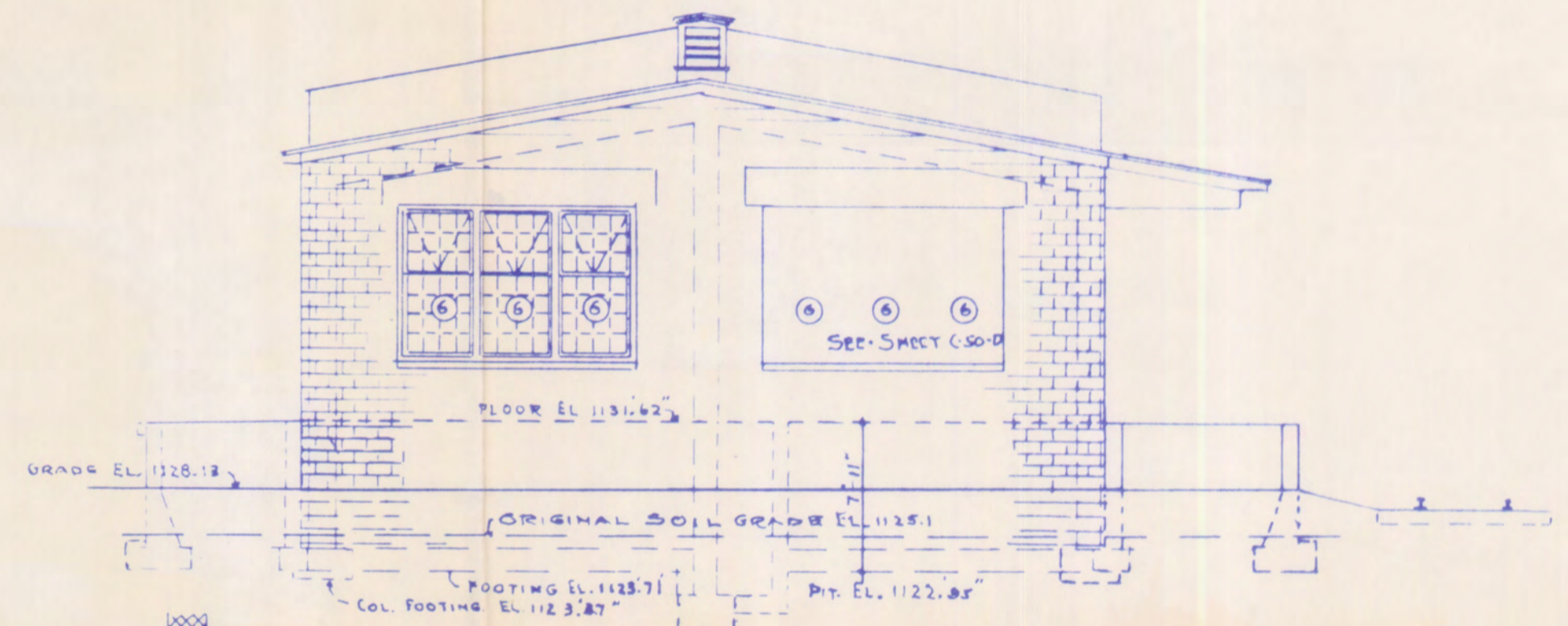
EAST OR REAR ELEVATION
SCALE 1/8" = 1'-0"



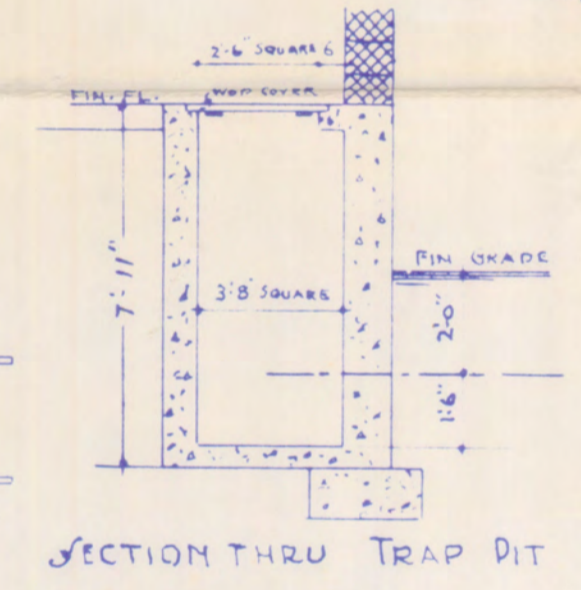
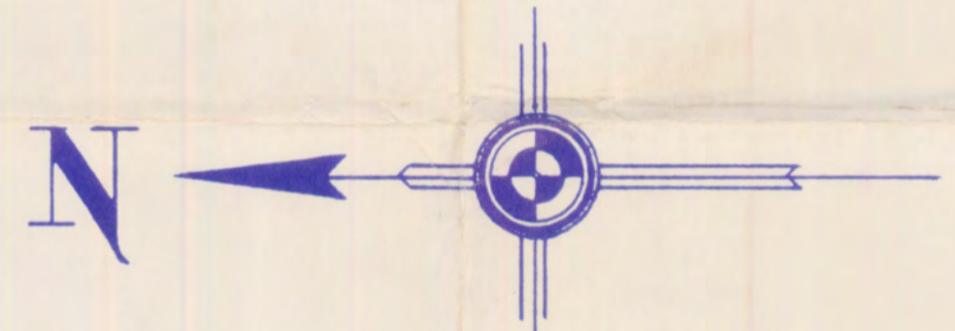
NORTH OR LEFT END ELEVATION
SCALE 1/8" = 1'-0"



WEST OR FRONT ELEVATION
SCALE 1/8" = 1'-0"

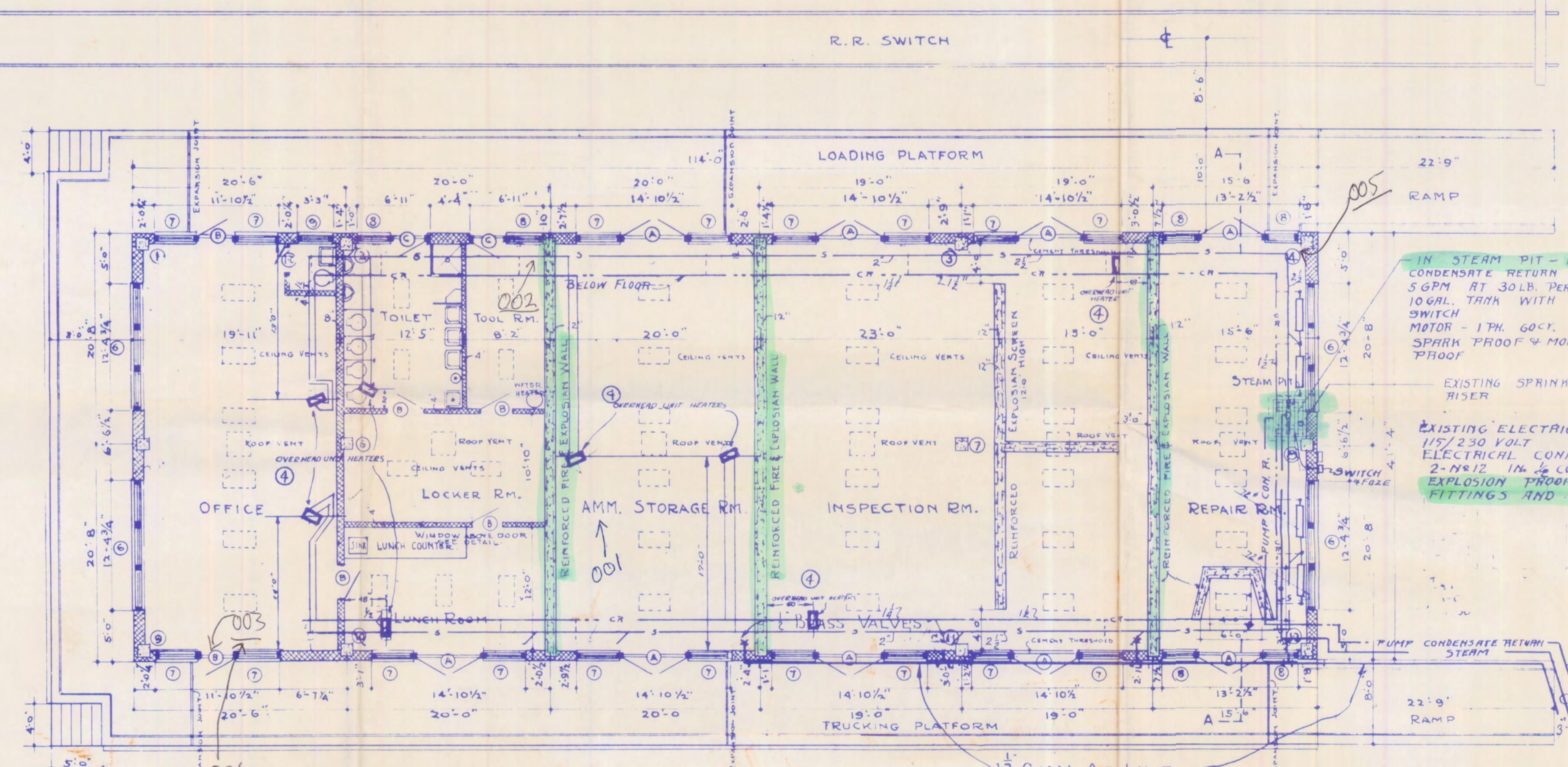


SOUTH OR RIGHT END ELEVATION

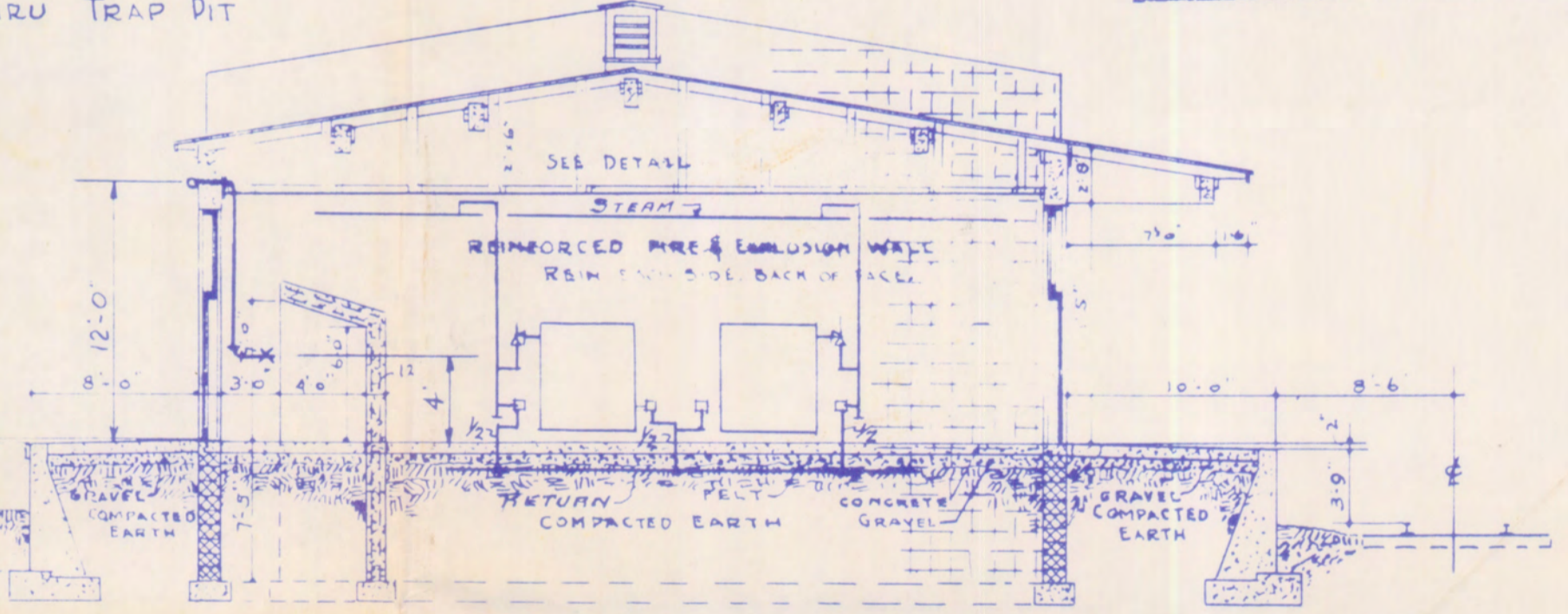


SECTION THRU TRAP PIT

DRAWING REVISED PER FIELD SURVEY
DATE March 28, 1942
CONTRACT NO. DA-11-173-DR-65
TRYGVE HOFF & ASSOCIATES
REV. BY D.S. CHK'D BY E.H.M.



FIRST FLOOR PLAN.
SCALE 1/8" = 1'-0"



SECTION THRU BUILDING AT A-A
SCALE 1/8" = 1'-0"

IN STEAM PIT - INSTALL
CONDENSATE RETURN PUMP,
5 GPM AT 30 LB. PER SQ. IN.
10 GAL. TANK WITH FLOAT
SWITCH
MOTOR - 1/2 HP. 60 CY. 115V.
SPARK PROOF & MOISTURE
PROOF

EXISTING ELECTRICAL PANEL
115/230 VOLT
ELECTRICAL CONNECTIONS TO MOTOR -
2-#12 IN 1/2" CONDUIT WITH
EXPLOSION PROOF AND VAPOR PROOF
FITTINGS AND SWITCH

NOTE

ALL WINDOWS AND DOORS ARE
GLAZED WITH OBSCURE WIRE
GLASS

REVISION NO. 1 AND 2 APPROVED BY -
L. H. EATON - PLANT ENGINEER
INSTALLED JULY 1950 AND BELOW GRADE
SYSTEM ABANDONED
C. H. WILLISTON - ASST. GENERAL MANAGER

C. W. MELDRUM - LT. COL. ORD. DEPT. COMMANDING

APPROVED
MARVIN L. KAUFER
MAJOR ORD. DEPT. COMMANDING OFFICER

REVISED SHEET 652-869 C OF E. COL.

THE JENNINGS - LAWRENCE CO.
ARCHITECT - ENGINEER
COLUMBUS, O. RAVENNA, O.

SCALE
1/8" = 1'-0"

REVISIONS

1	BLDG. OR. 1/24/42
2	REF. TO ADD. PLAN 2/11/42
3	TRUCKING RM. 2/11/42
4	ASSOCIATES 2/11/42
5	UNIT 2/11/42

**PORTAGE ORDNANCE DEPOT
INSPECTORS WORKSHOP
FLOOR PLAN, ELEVATIONS
& CROSS SECTION
HEATING PLAN**

DRAWN BY GEF
CHECKED BY
APPROVED BY DIRECTOR (S)
F. E. SMITH
CAPT. CO. E. AREA ENG.

DATE
NOV - 1942
PLAN NUMBER
6988-595-1