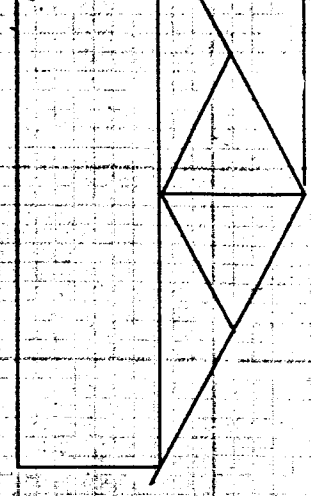
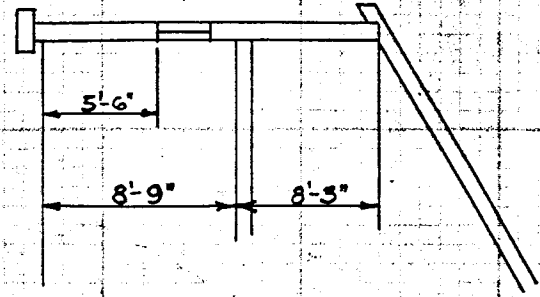


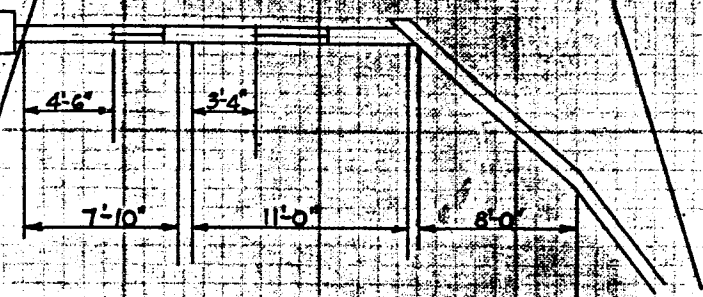
SECTION



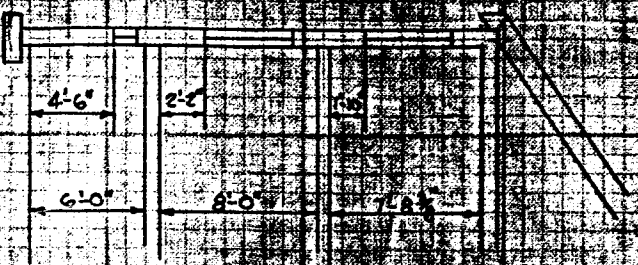
DETAIL



DETAIL

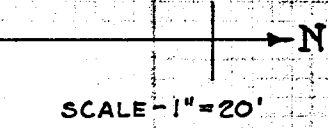
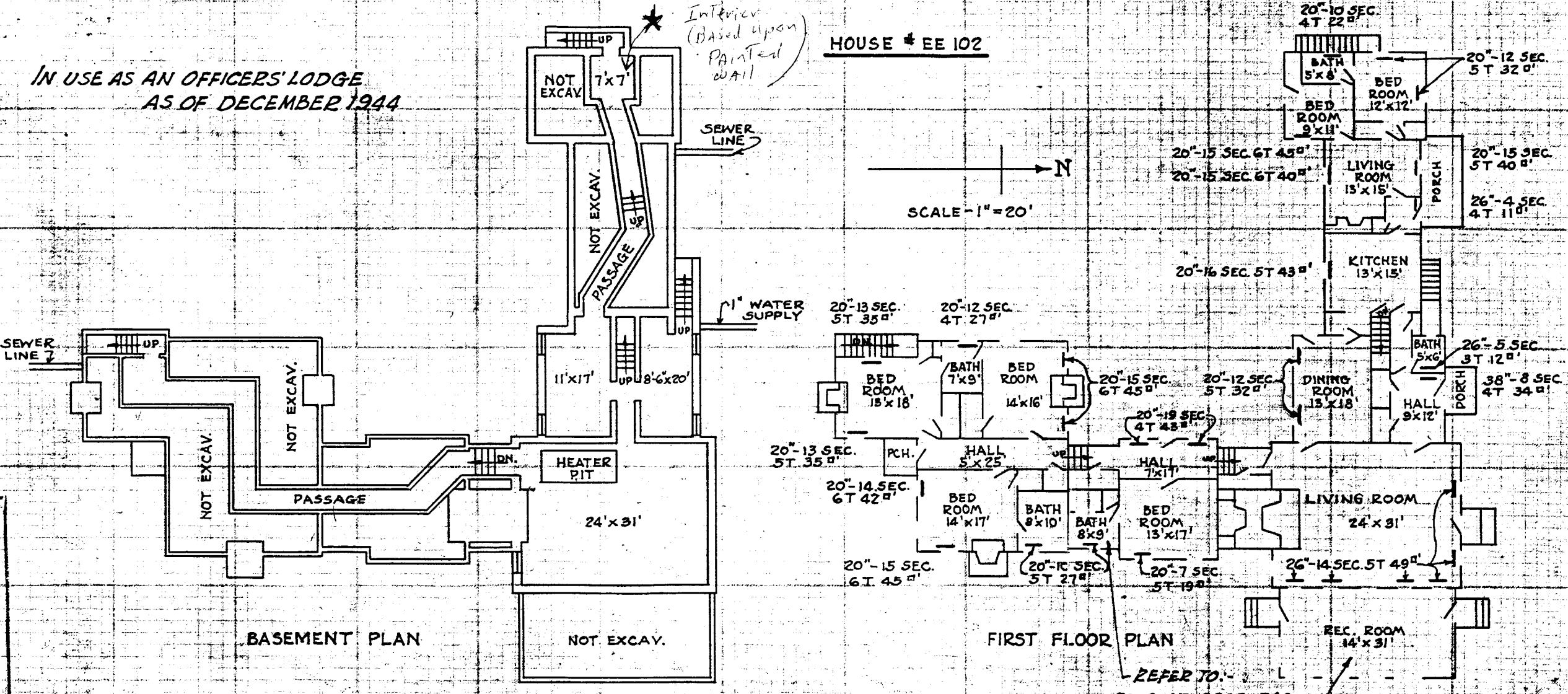


DETAIL



IN USE AS AN OFFICERS' LODGE AS OF DECEMBER 1944

HOUSE # EE 102



Interior (Based upon Painted wall)

6-6-91

Action:

1. Remove All Cans with product - Most products solidified BY HAND!!
2. Any product (Paint) that has been released - Appears only tea can (Approx. 1 gal) was released to soil. Remove All visible spilled paint and 2 minor quantities Soil
3. [Illegible handwritten text]

DRAWING REVISED PER FIELD SURVEY DATE SEPTEMBER 1945

REFER TO: DWG. NO. 6988-540 6988-538 (6988-539)