



Figure 2-14a. Atlas Offices



Figure 2-14b. Hunkin-Conkey Offices

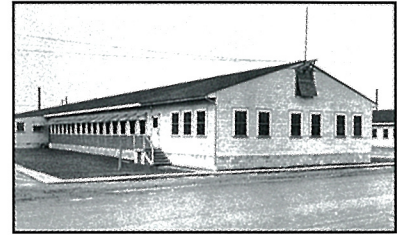


Figure 2-14c. Wilbur Watson Offices



Figure 2-14d. Cafeteria

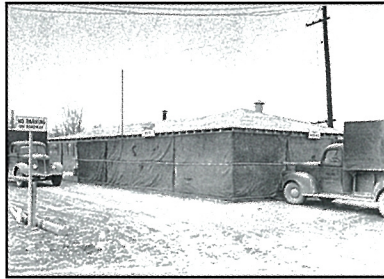


Figure 2-14e. Commissary

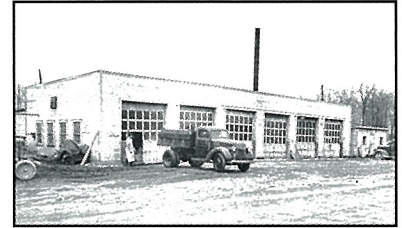


Figure 2-14f. Truck repair garage



Figure 2-14g. Truck greasing rack



Figure 2-14h. Gas Station

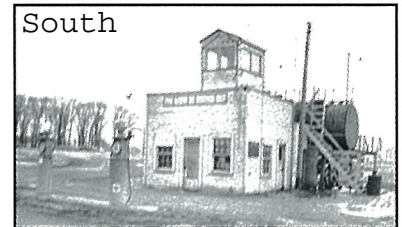


Figure 2-14i. Gas Station



Figure 2-14j. Blacksmith shop



Figure 2-14k. Employment Office

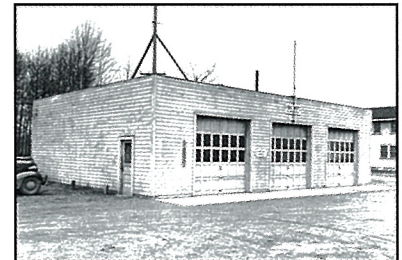


Figure 2-14l. Fire House

These were most of the major buildings of the Construction Camp. It is fairly obvious that all buildings were built off variations of one or two simple designs. Ease of construction and speed were of the utmost importance, and this entire complex (see Figure 2-12) was started on September 1, 1940 and completed by the end of the year. *U.S. Army Corps of Engineers photos, RVAAP Collection*

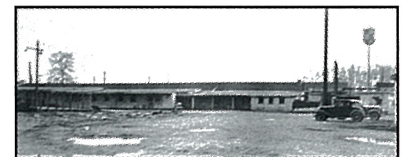


Figure 2-14m. Workers sheds