



RAVENNA ARSENAL, INC., PHOTO

Subj: _____

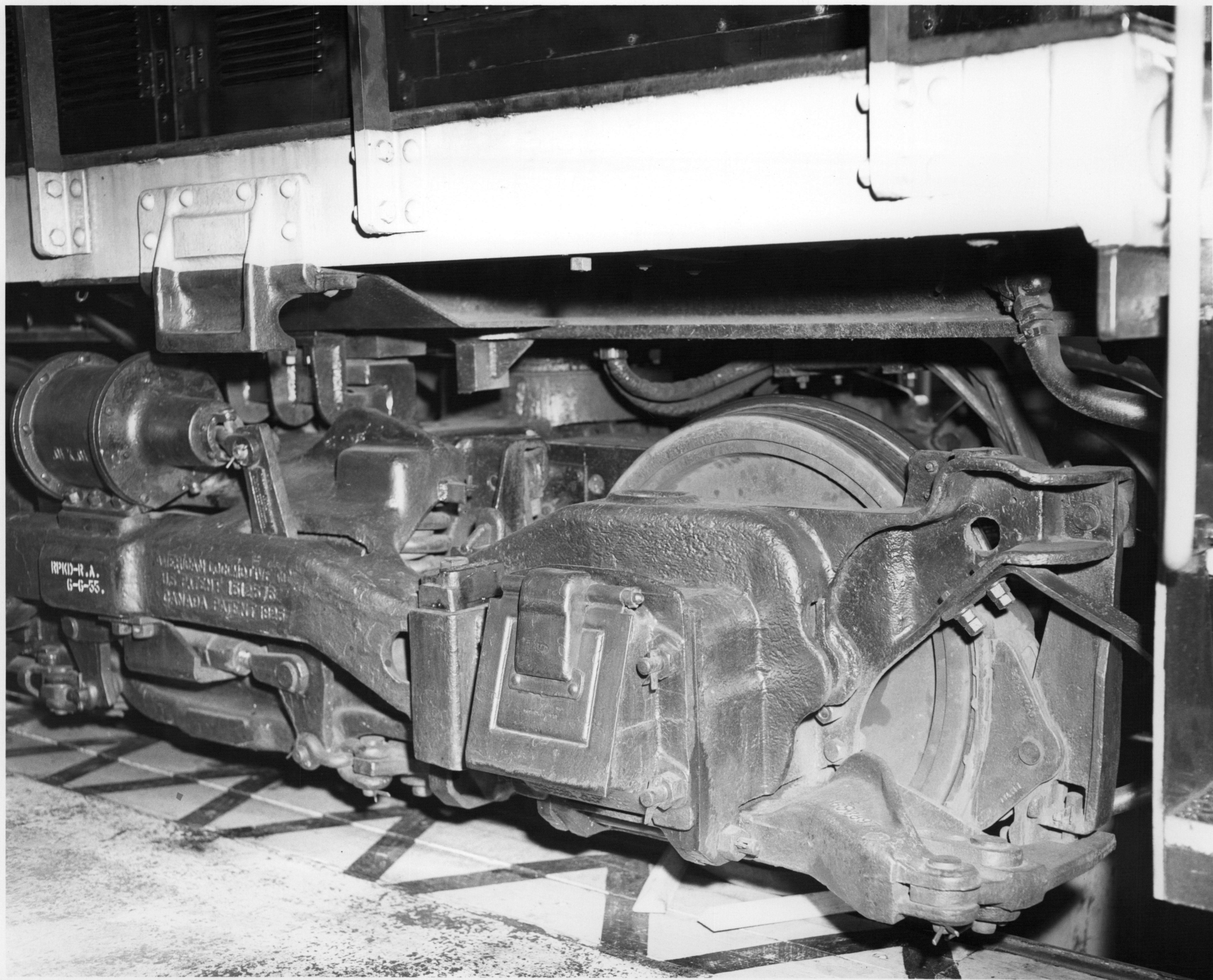
Place _____

Date _____

Reg. No

44 34

IF PUBLISHING PHOTO USE MUST READ
RAVENNA ARSENAL, INC., PHOTO



RAVENNA ARSENAL, INC., PHOTO

Subj: _____

Place _____

Date _____

re. to *3915* _____

IF THIS PHOTO IS NOT TO BE REPRODUCED

RAVENNA ARSENAL, INC., PHOTO



RAVENNA ARSENAL, INC., PHOTO

Subj: _____

Place _____

Date _____

Reg. No

4435

IF PUE-18400-1000T USE MUST READ

RAVENNA ARSENAL, INC., PHOTO

Resolving which for
assembly to the ~~land~~

Basil Ochtree

Doctor's and motor
leaving being assembled
to the locomotive driver
article,

~~B.A. 1~~ J. J. Moberly
B. J. Colcraft