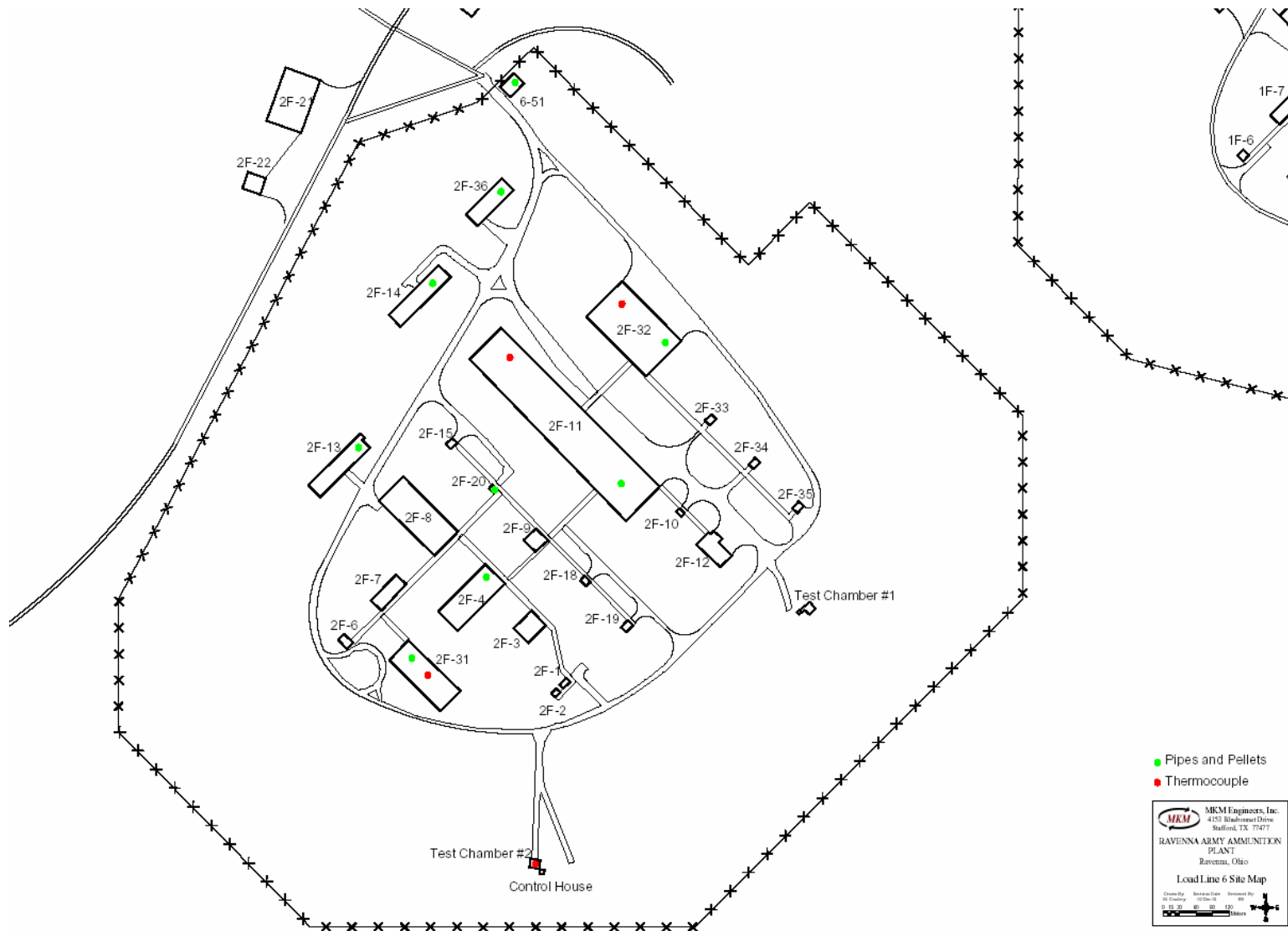




Thermal Decomposition and 5X Certification of Load Lines 6, 9 and Wet Storage Igloos 1, 1A, 2, & 2A

Temperature Monitoring Locations – LL6





Thermal Decomposition and 5X Certification of Load Lines 6, 9 and Wet Storage Igloos 1, 1A, 2, & 2A

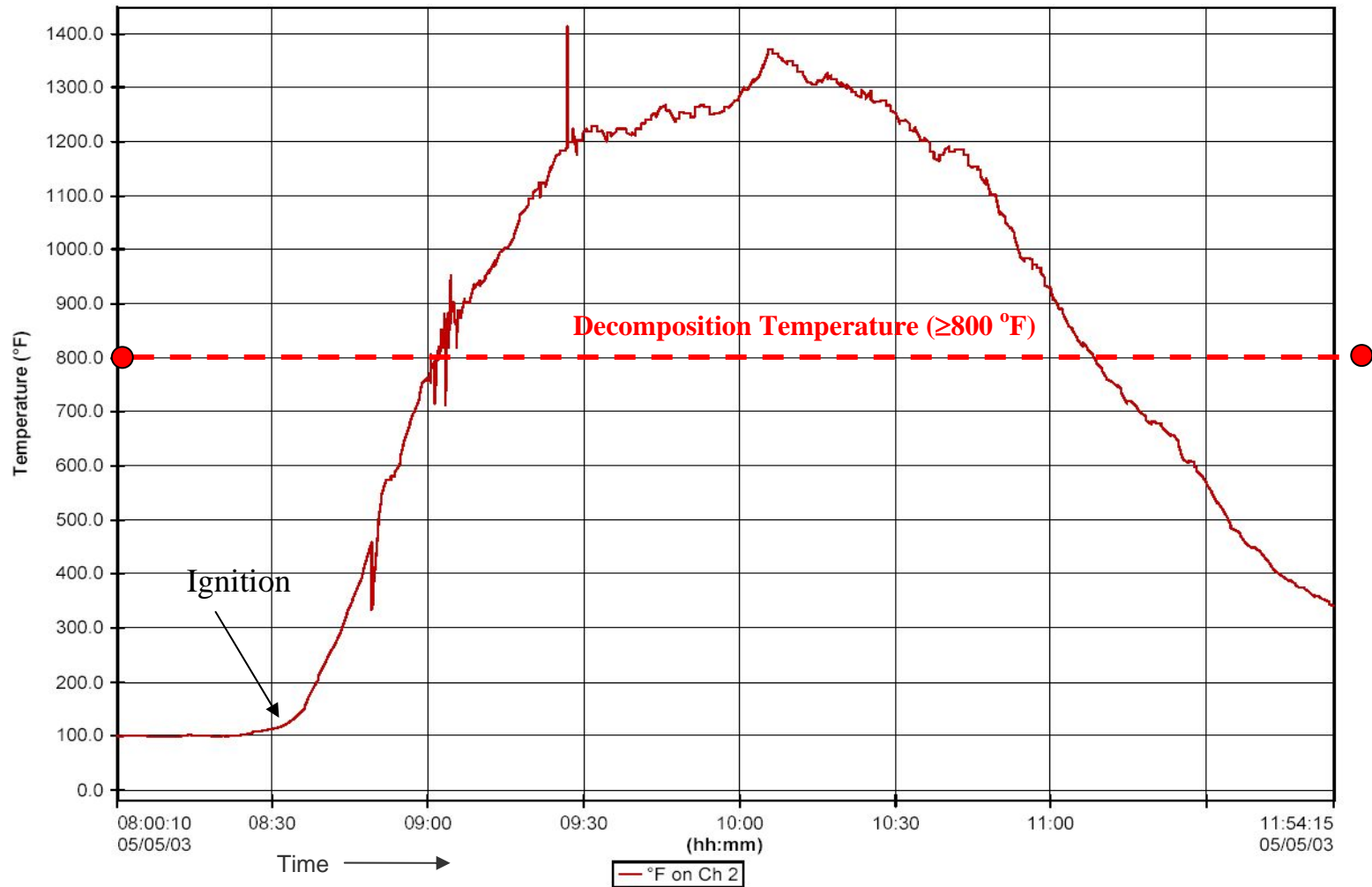
LL-6
Thermocouple
Data Charts



Thermal Decomposition and 5X Certification of Load Lines 6, 9 and Wet Storage Igloos 1, 1A, 2, & 2A

Data Logger # 1

Bldg. /Ramp: **2F-31**



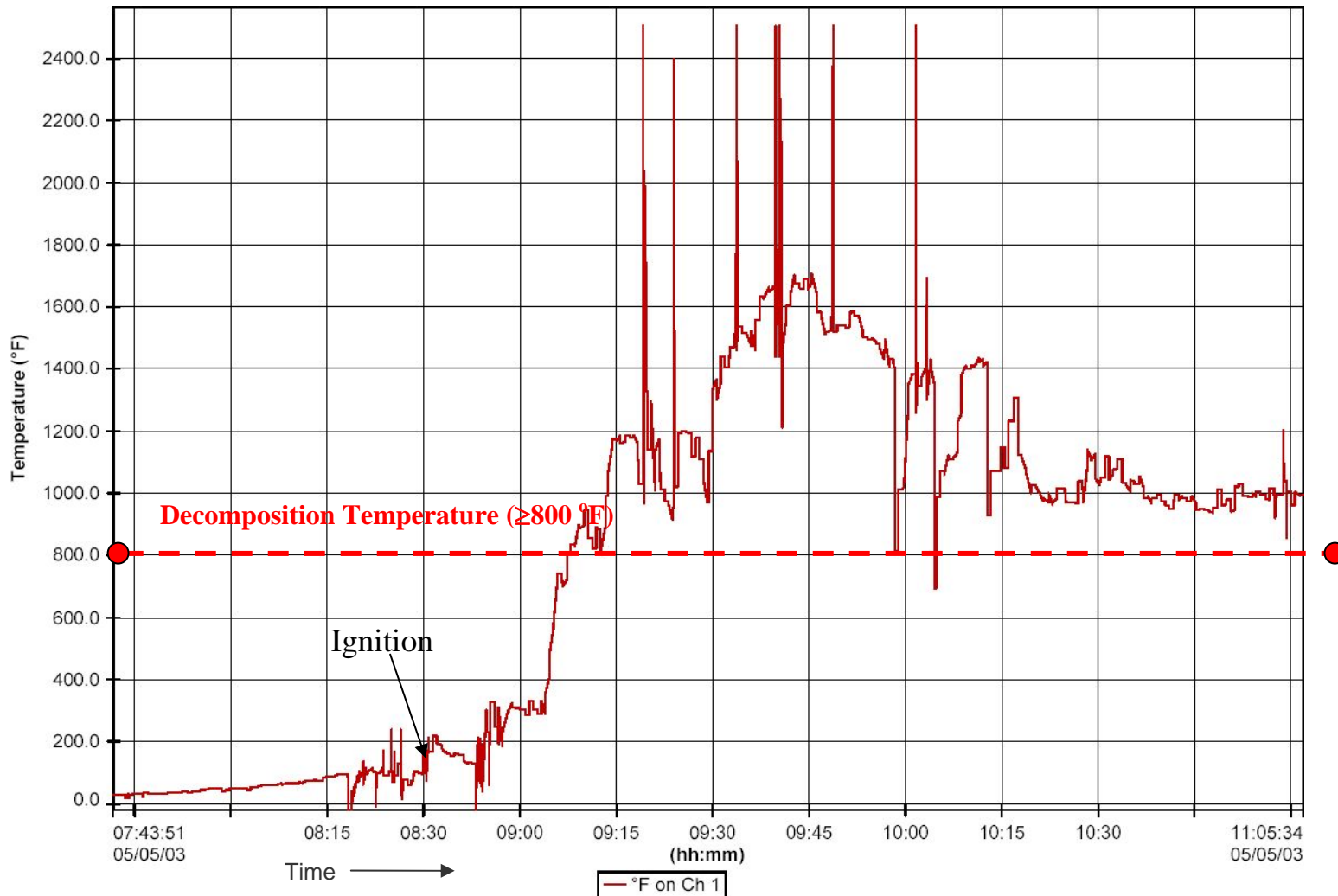
Rationale for Placing Thermocouple in Bldg. 2F-31: Random



Thermal Decomposition and 5X Certification of Load Lines 6, 9 and Wet Storage Igloos 1, 1A, 2, & 2A

Data Logger # 2

Bldg. /Ramp: 2F-32



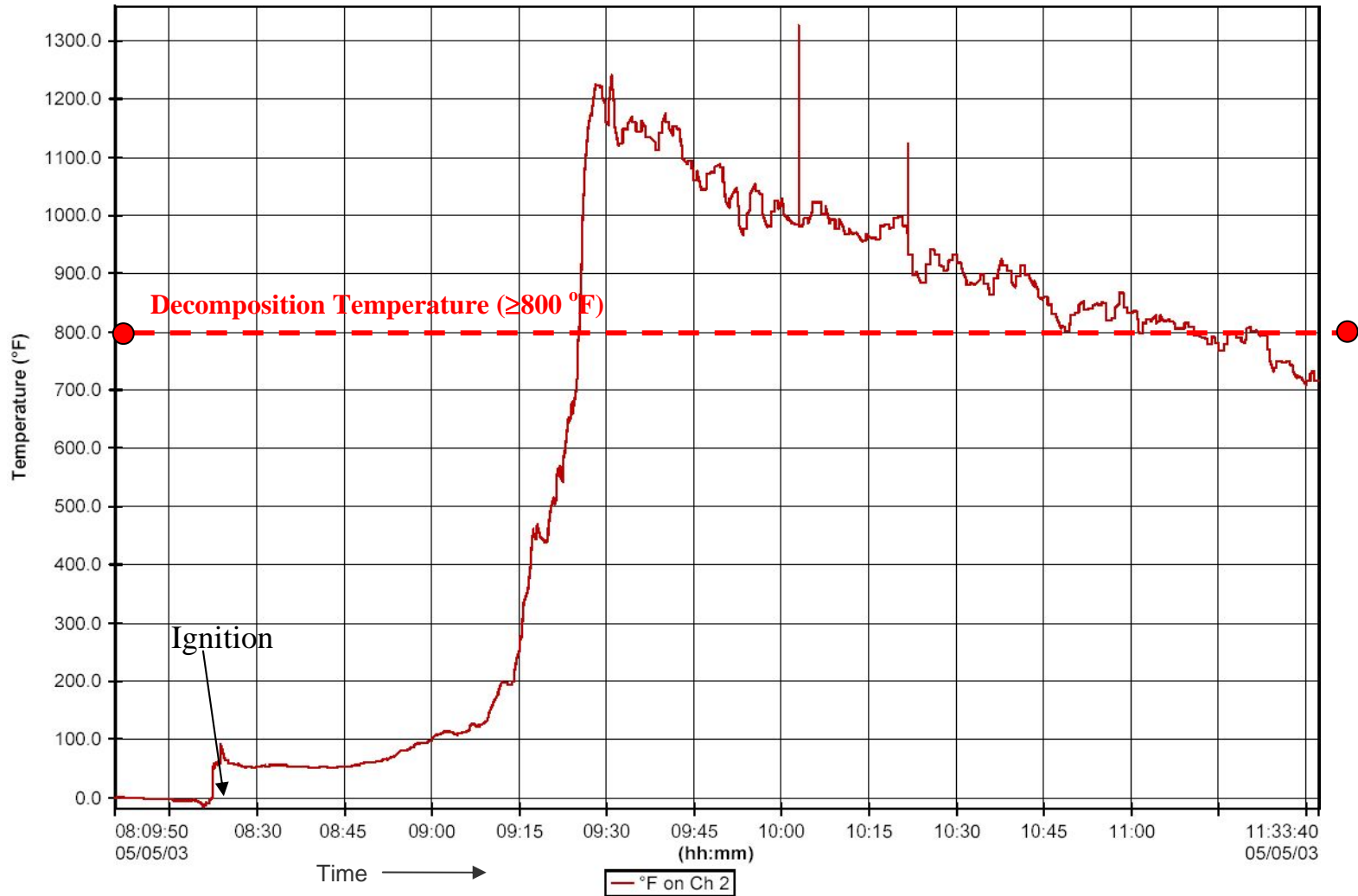
Rationale for Placing Thermocouple in Bldg. 2F-32: Random



Thermal Decomposition and 5X Certification of Load Lines 6, 9 and Wet Storage Igloos 1, 1A, 2, & 2A

Data Logger # 2

Bldg. /Ramp: **Test Chamber #2**



Rationale for Placing Thermocouple in Bldg. Test Chamber # 2: Random



Thermal Decomposition and 5X Certification of Load Lines 6, 9 and Wet Storage Igloos 1, 1A, 2, & 2A

LL-6
Temperature Indicating
Pallets/Paint Results



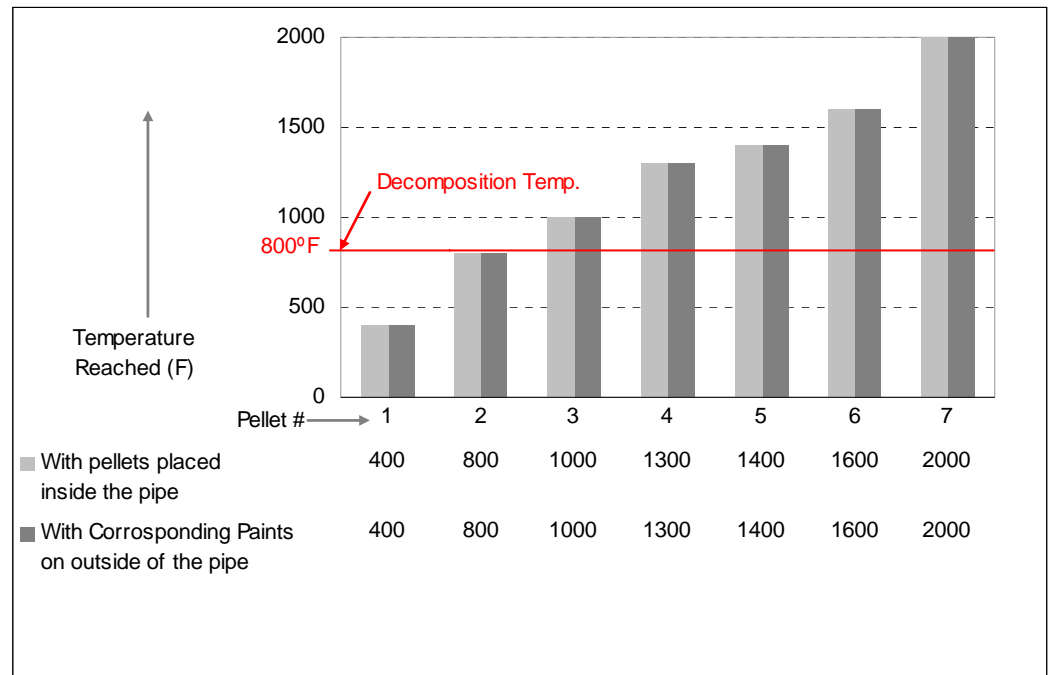
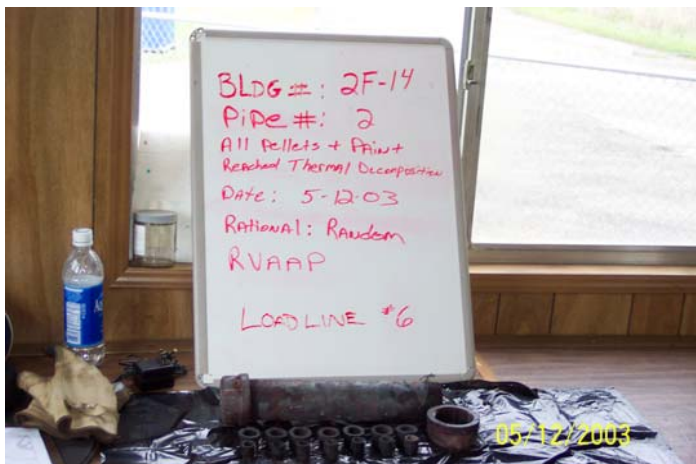
Thermal Decomposition and 5X Certification of Load Lines 6, 9 and Wet Storage Igloos 1, 1A, 2, & 2A

Field ID # 01

Bldg. /Ramp: **2F-14**

Rationale for Placing Indicating Devices: Random

Max. Temperature Reached With Outside Paint: 2000° F
With Inside Pallets: 2000° F





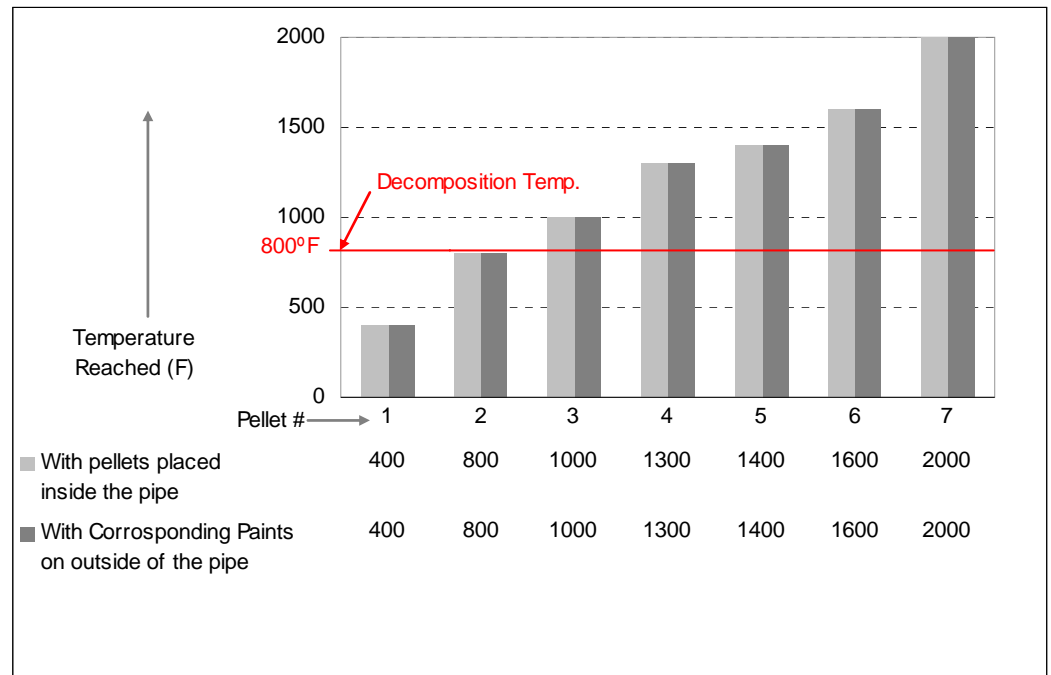
Thermal Decomposition and 5X Certification of Load Lines 6, 9 and Wet Storage Igloos 1, 1A, 2, & 2A

Field ID # 02

Bldg. /Ramp: **2F-20**

Rationale for Placing Indicating Devices: Random

Max. Temperature Reached With Outside Paint: 2000° F
With Inside Pellets: 2000° F





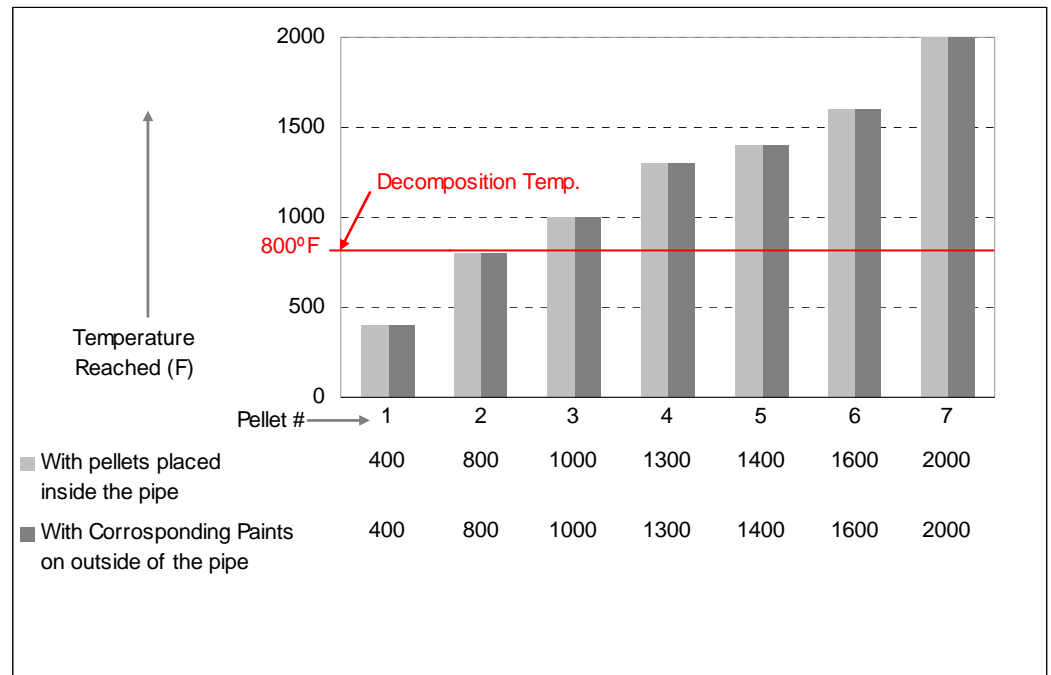
Thermal Decomposition and 5X Certification of Load Lines 6, 9 and Wet Storage Igloos 1, 1A, 2, & 2A

Field ID # 05

Bldg. /Ramp: **2F-36**

Rationale for Placing Indicating Devices: Random

Max. Temperature Reached With Outside Paint: 2000° F
With Inside Pellets: 2000° F





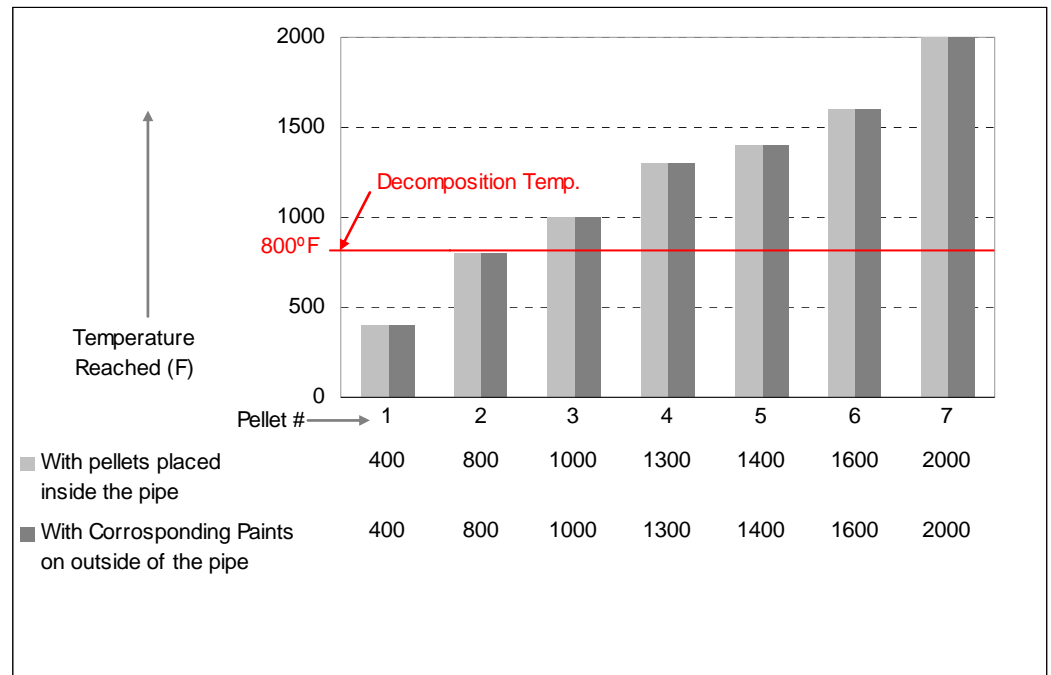
Thermal Decomposition and 5X Certification of Load Lines 6, 9 and Wet Storage Igloos 1, 1A, 2, & 2A

Field ID # 17

Bldg. /Ramp: **6-51**

Rationale for Placing Indicating Devices: Random

Max. Temperature Reached With Outside Paint: 2000° F
With Inside Pellets: 2000° F





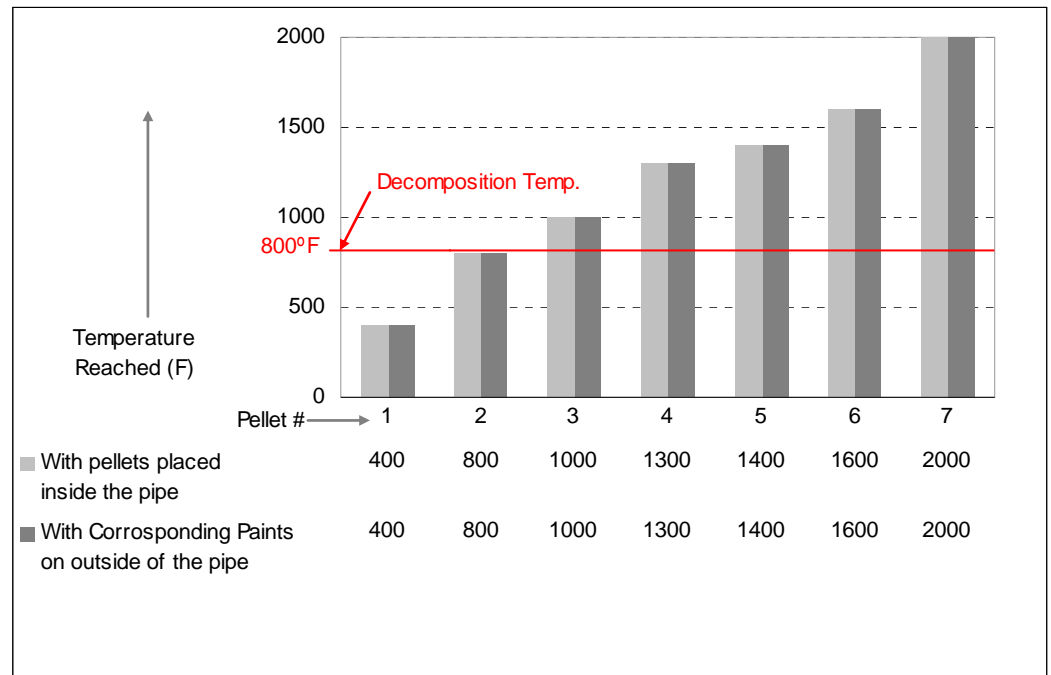
Thermal Decomposition and 5X Certification of Load Lines 6, 9 and Wet Storage Igloos 1, 1A, 2, & 2A

Field ID # 20

Bldg./Ramp: **2F-32**

Rationale for Placing Indicating Devices: Random

Max. Temperature Reached With Outside Paint: 2000° F
With Inside Pallets: 2000° F





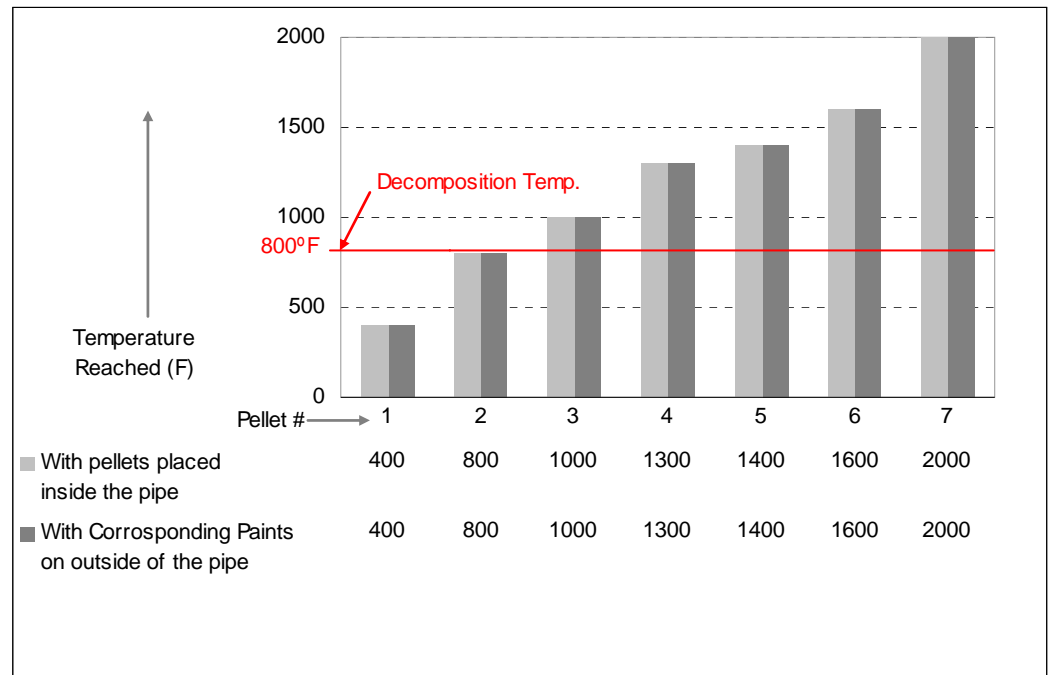
Thermal Decomposition and 5X Certification of Load Lines 6, 9 and Wet Storage Igloos 1, 1A, 2, & 2A

Field ID # 28

Bldg. /Ramp: **2F-11**

Rationale for Placing Indicating Devices: Random

Max. Temperature Reached With Outside Paint: 2000° F
With Inside Pellets: 2000° F

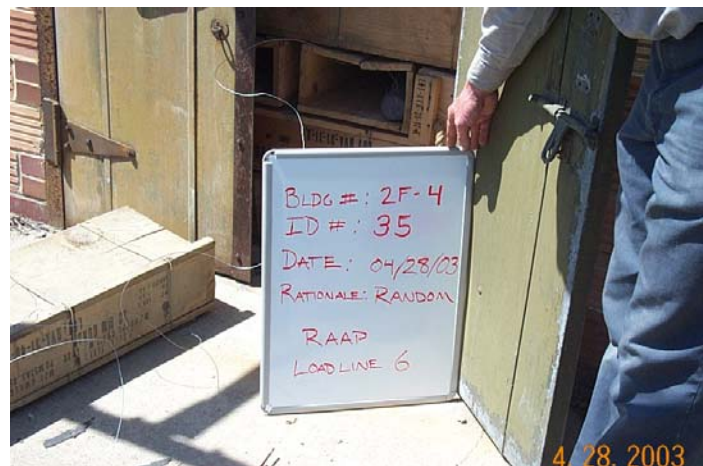




Thermal Decomposition and 5X Certification of Load Lines 6, 9 and Wet Storage Igloos 1, 1A, 2, & 2A

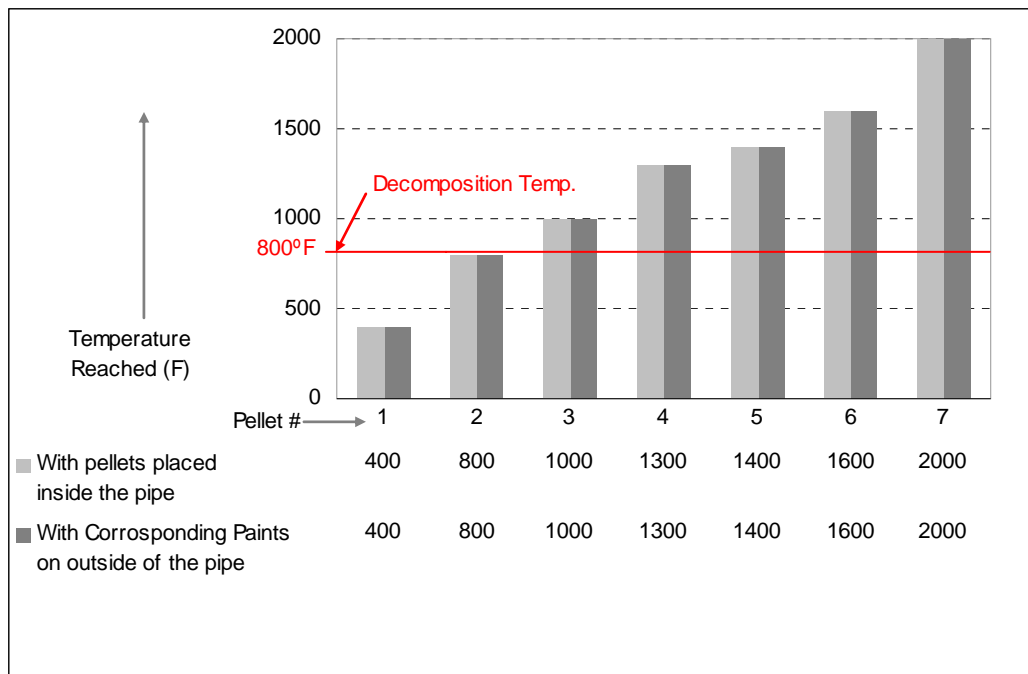
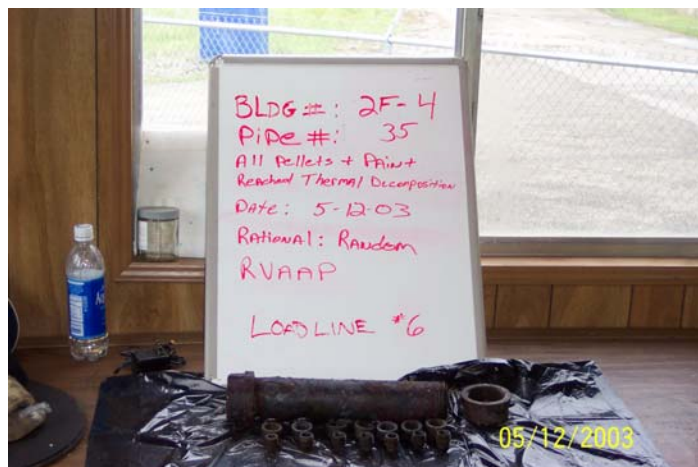
Field ID # 35

Bldg. /Ramp: **2F-4**



Rationale for Placing Indicating Devices: Random

Max. Temperature Reached With Outside Paint: 2000° F
With Inside Pellets: 2000° F





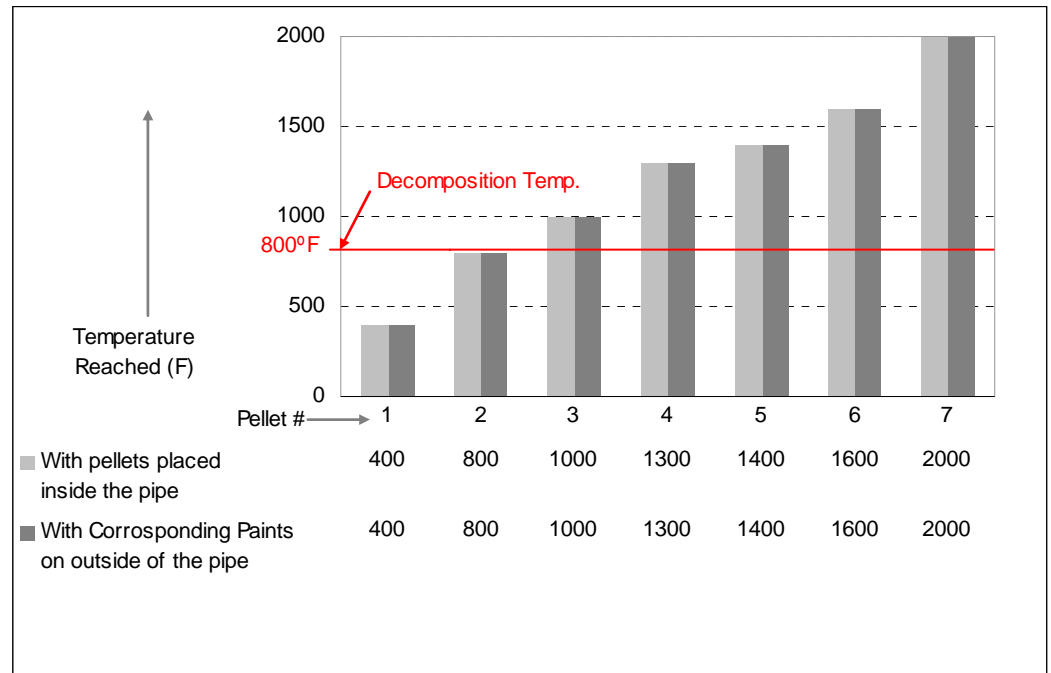
Thermal Decomposition and 5X Certification of Load Lines 6, 9 and Wet Storage Igloos 1, 1A, 2, & 2A

Field ID # 49

Bldg./Ramp: **2F-31**

Rationale for Placing Indicating Devices: Random

Max. Temperature Reached With Outside Paint: 2000° F
With Inside Pellets: 2000° F





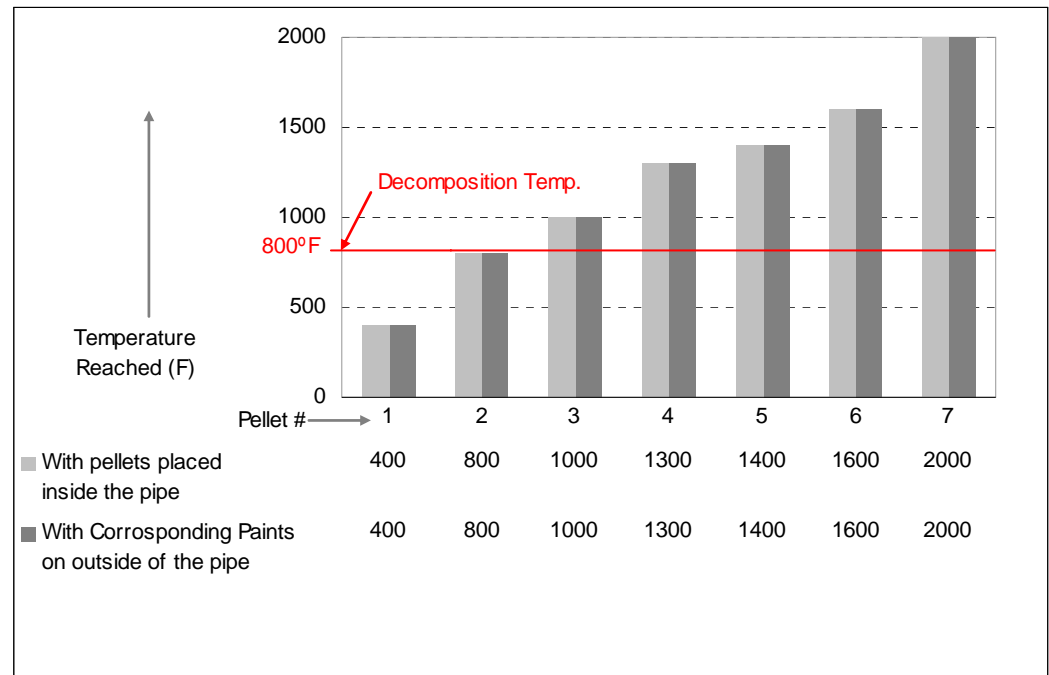
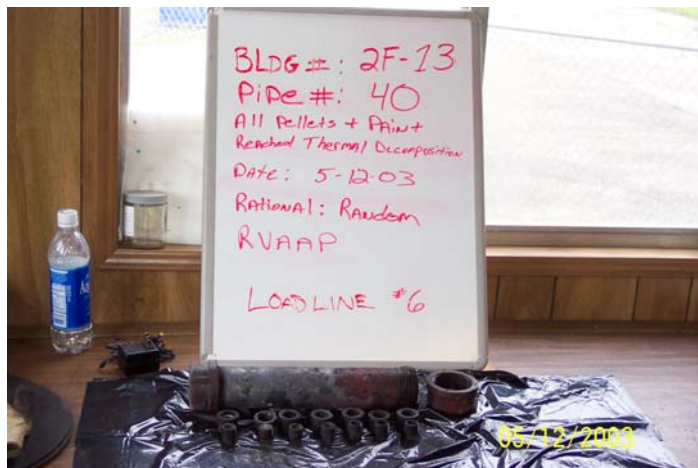
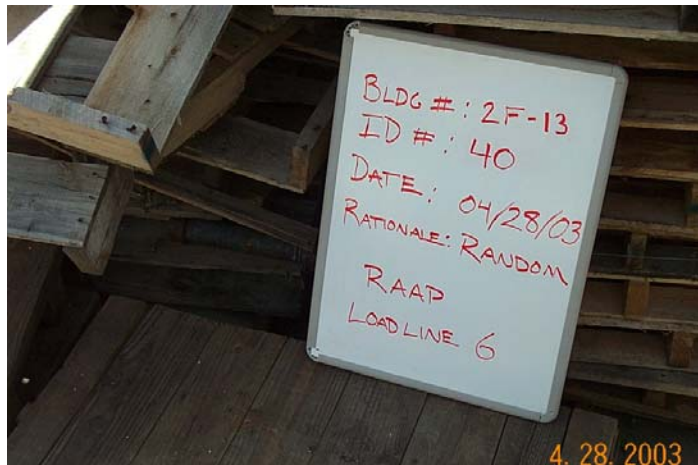
Thermal Decomposition and 5X Certification of Load Lines 6, 9 and Wet Storage Igloos 1, 1A, 2, & 2A

Field ID # 40

Bldg. /Ramp: **2F-13**

Rationale for Placing Indicating Devices: Random

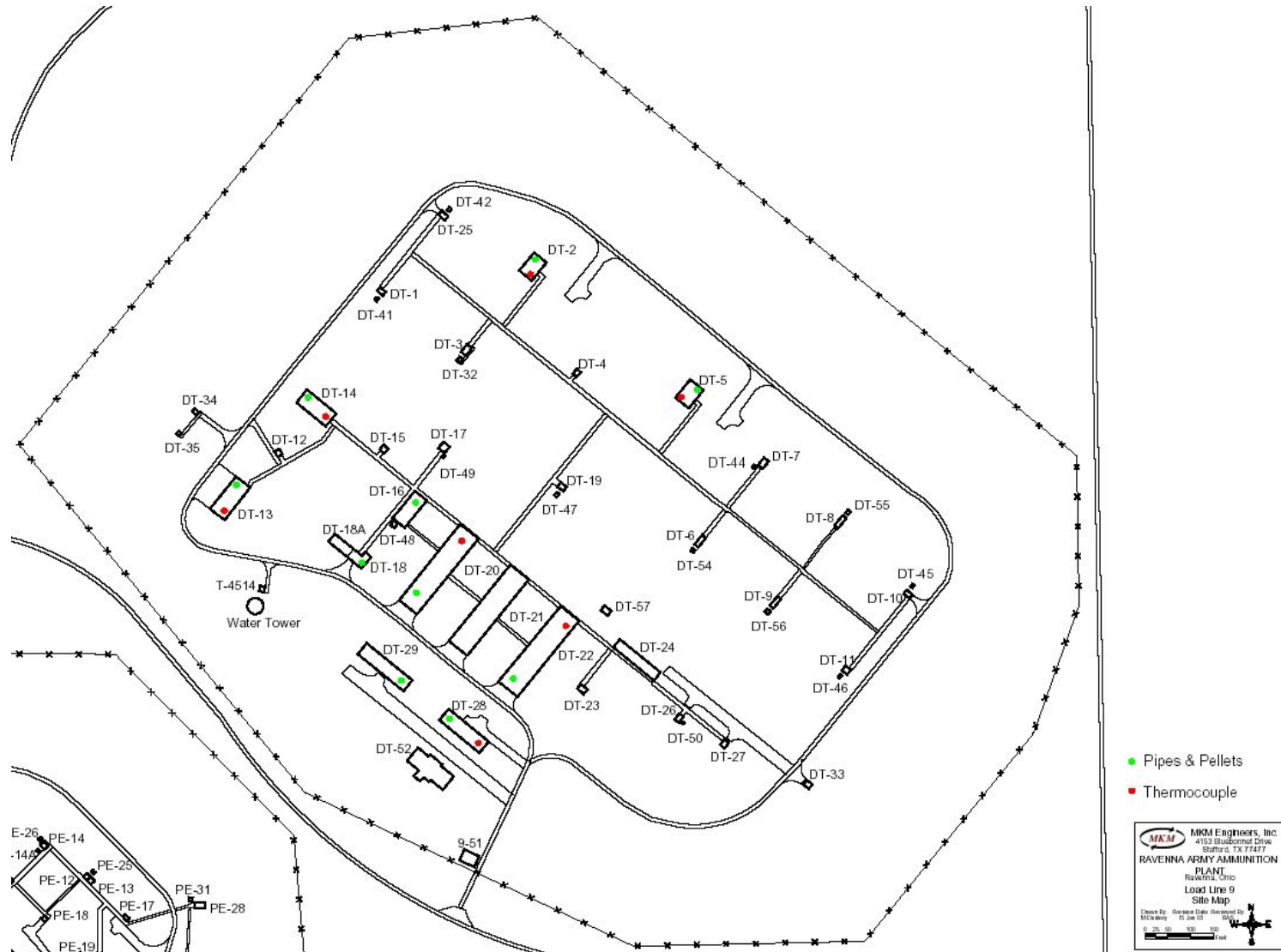
Max. Temperature Reached With Outside Paint: 2000° F
With Inside Pellets: 2000° F





Thermal Decomposition and 5X Certification of Load Lines 6, 9 and Wet Storage Igloos 1, 1A, 2, & 2A

Temperature Monitoring Locations – LL9





Thermal Decomposition and 5X Certification of Load Lines 6, 9 and Wet Storage Igloos 1, 1A, 2, & 2A

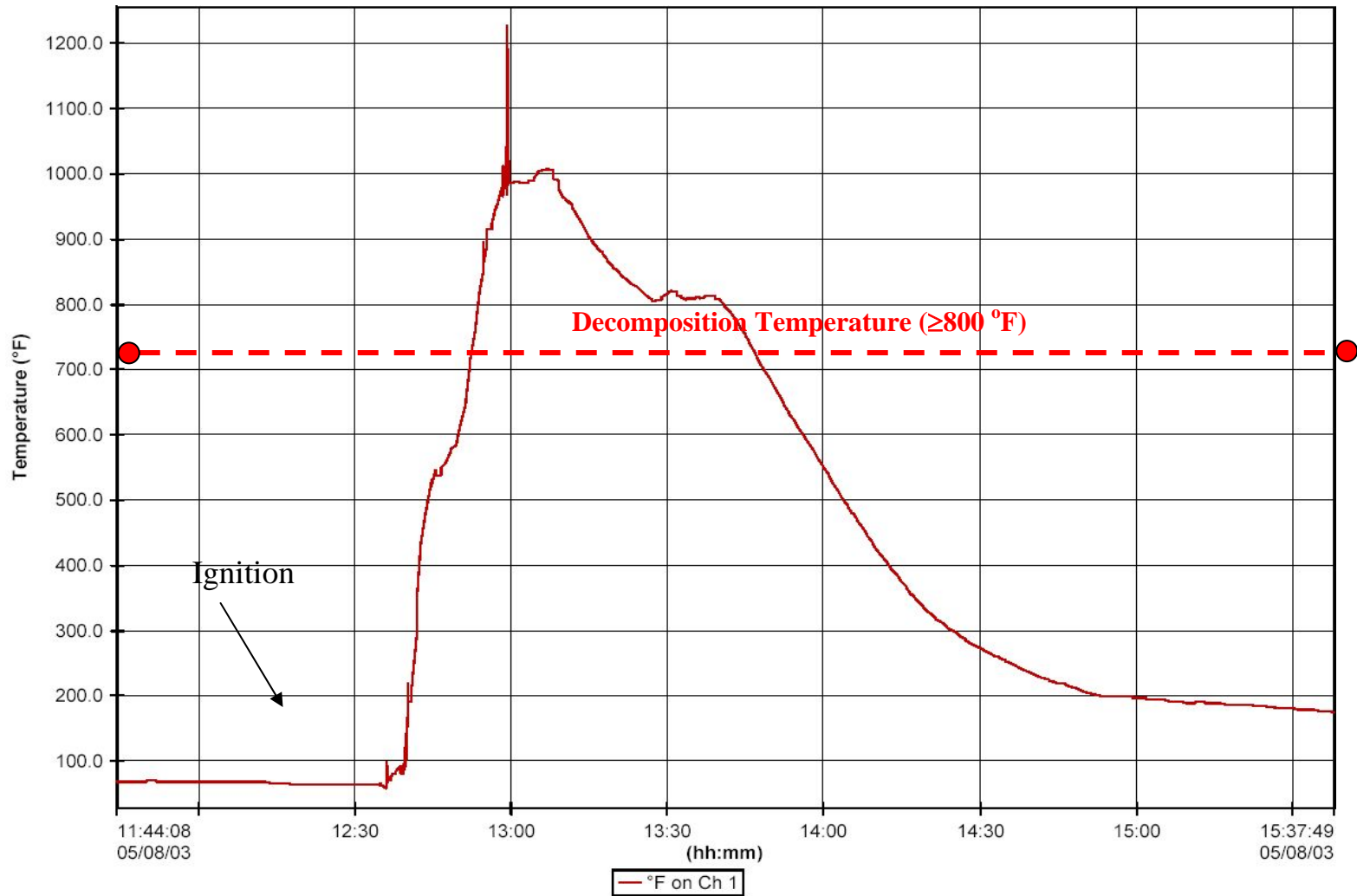
LL-9
Thermocouple
Data Charts



Thermal Decomposition and 5X Certification of Load Lines 6, 9 and Wet Storage Igloos 1, 1A, 2, & 2A

Data Logger # 1

Bldg. /Ramp: DT-2



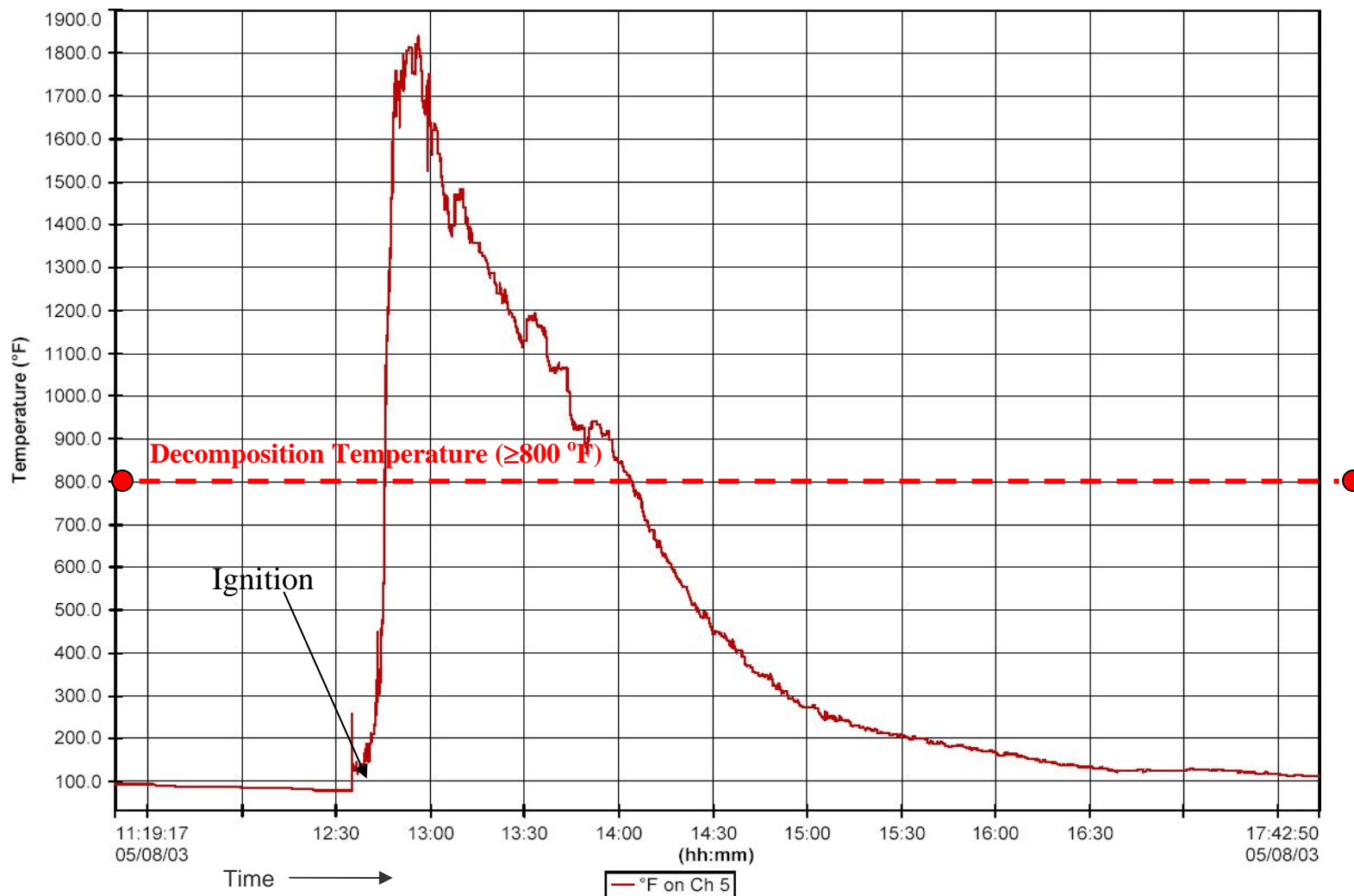
Rationale for Placing Thermocouple in Bldg. DT-2: Random



Thermal Decomposition and 5X Certification of Load Lines 6, 9 and Wet Storage Igloos 1, 1A, 2, & 2A

Data Logger # 1

Bldg. /Ramp: **DT-5**



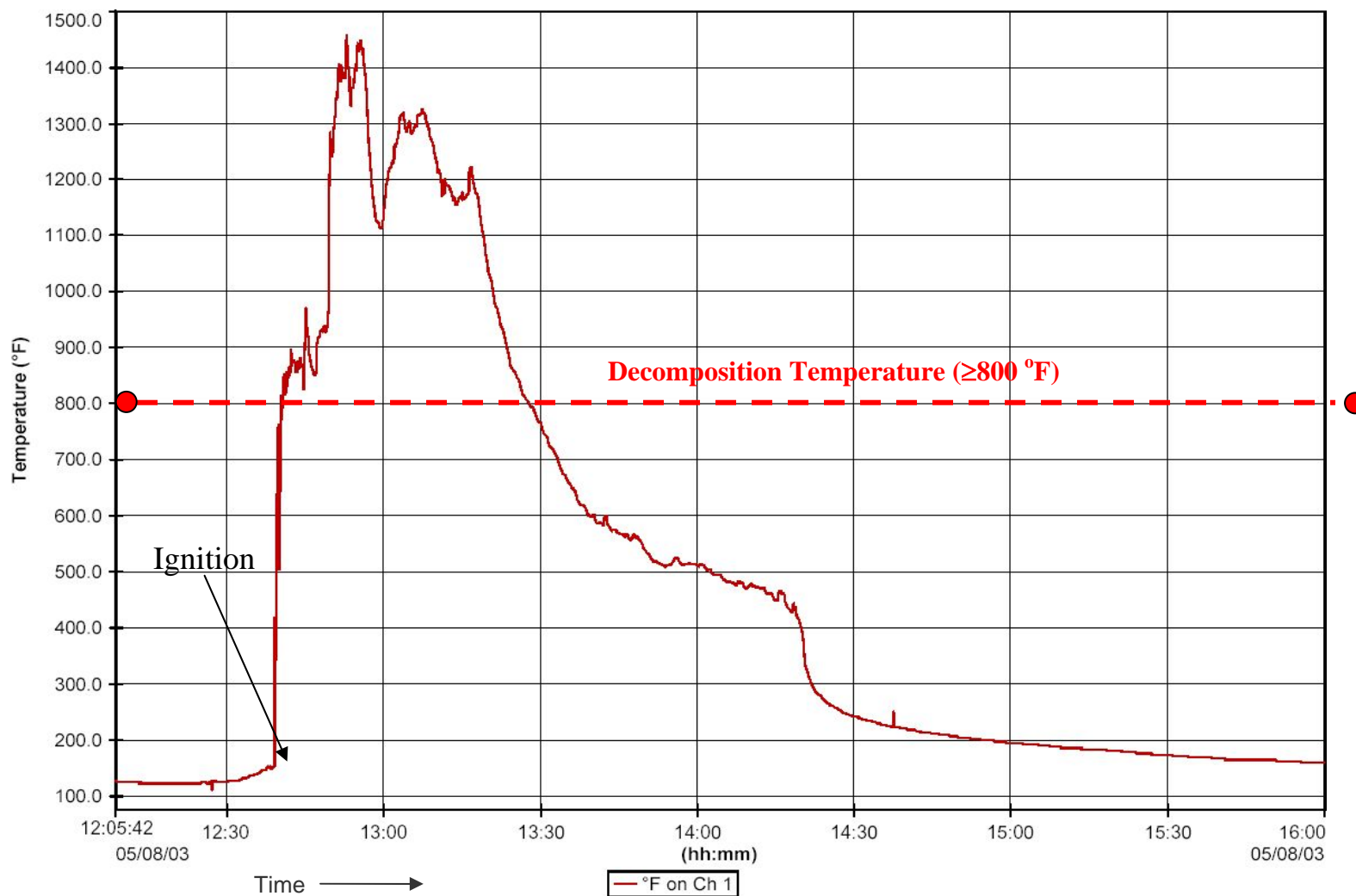
Rationale for Placing Thermocouple in Bldg. DT-5: Random



Thermal Decomposition and 5X Certification of Load Lines 6, 9 and Wet Storage Igloos 1, 1A, 2, & 2A

Data Logger # 3

Bldg. /Ramp: **DT-13**



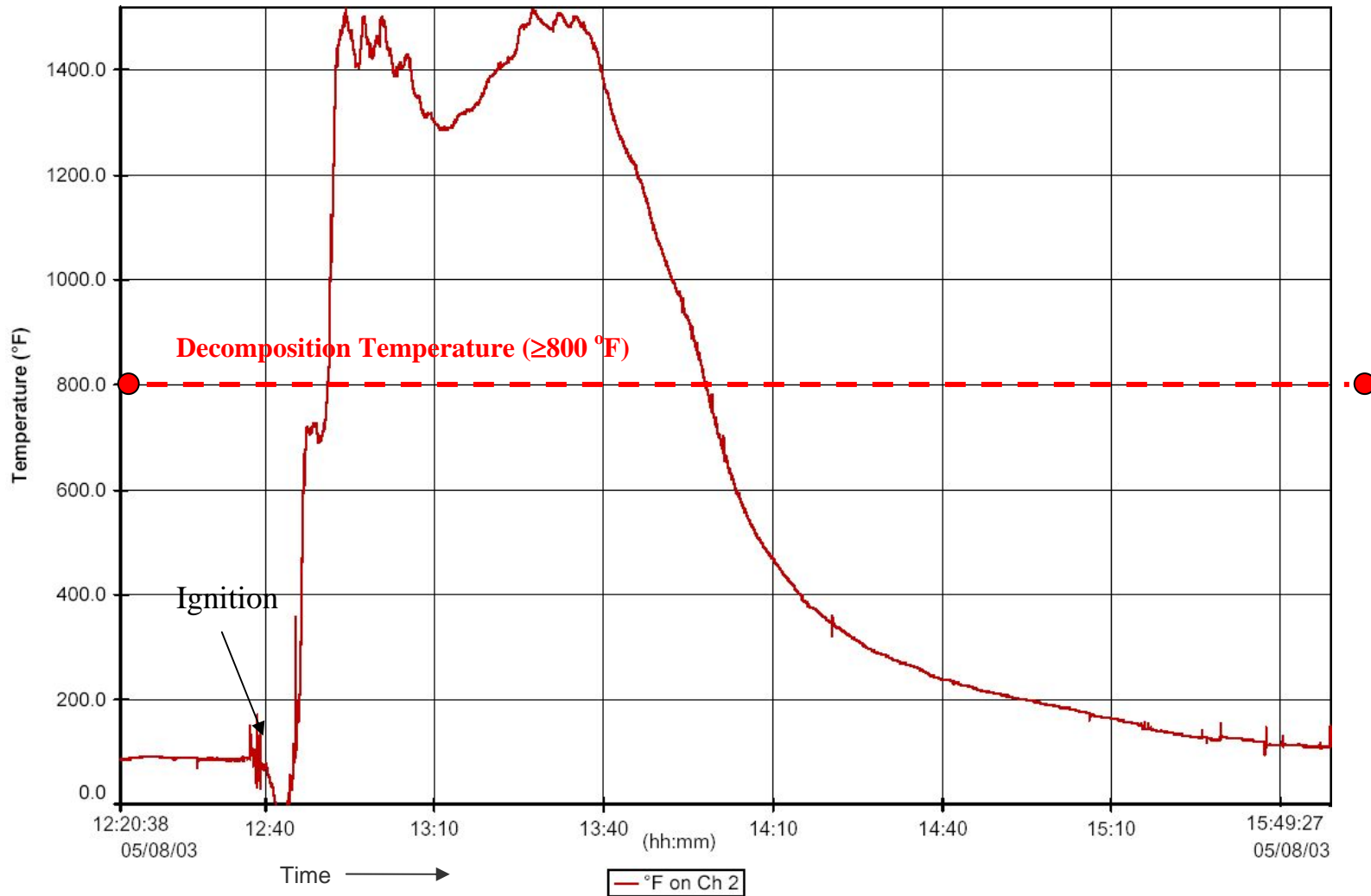
Rationale for Placing Thermocouple in Bldg. DT-13: Random



Thermal Decomposition and 5X Certification of Load Lines 6, 9 and Wet Storage Igloos 1, 1A, 2, & 2A

Data Logger # 3

Bldg. /Ramp: **DT-14**



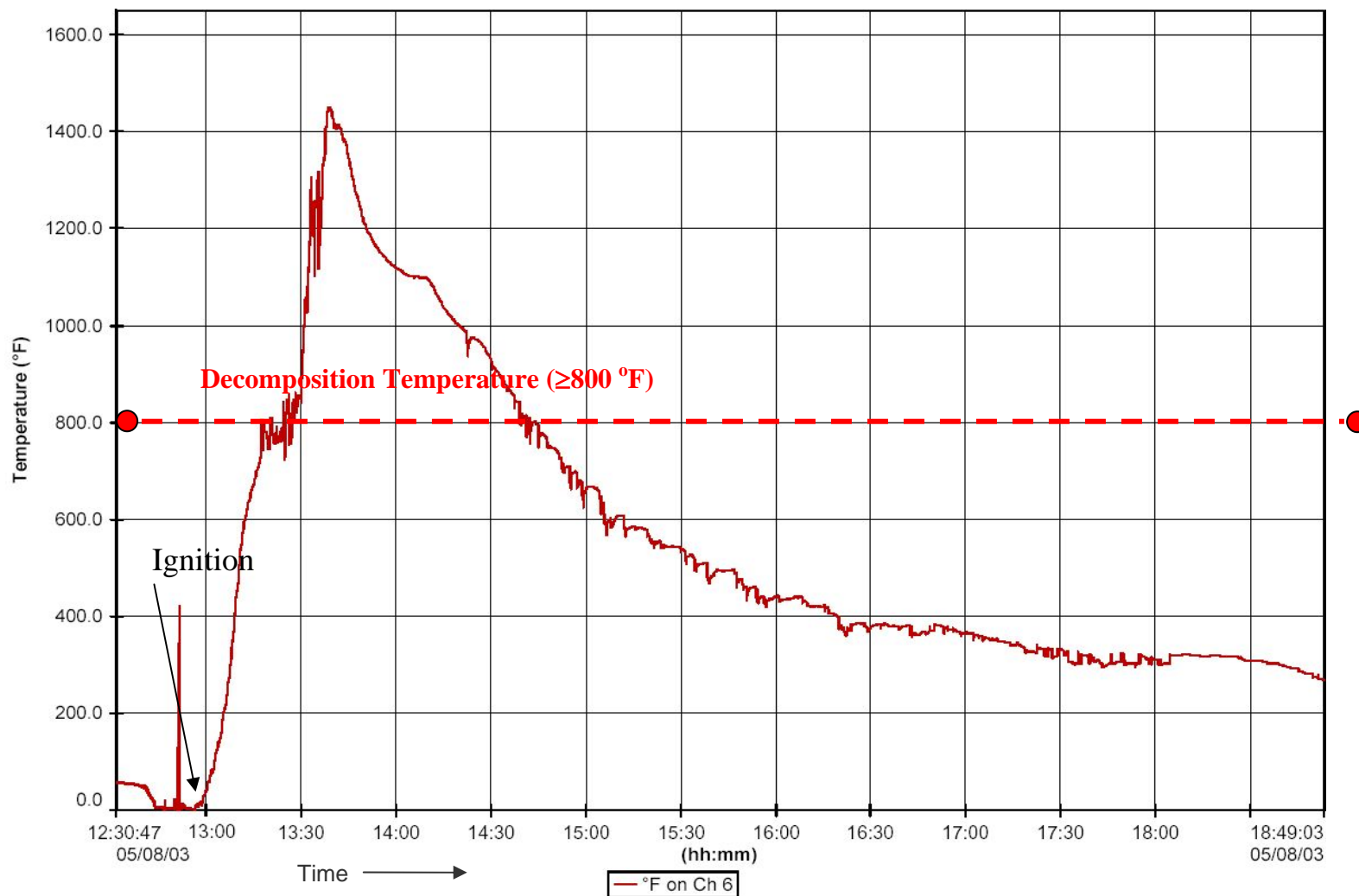
Rationale for Placing Thermocouple in Bldg. DT-14: Random



Thermal Decomposition and 5X Certification of Load Lines 6, 9 and Wet Storage Igloos 1, 1A, 2, & 2A

Data Logger # 3

Bldg. /Ramp: **DT-20**



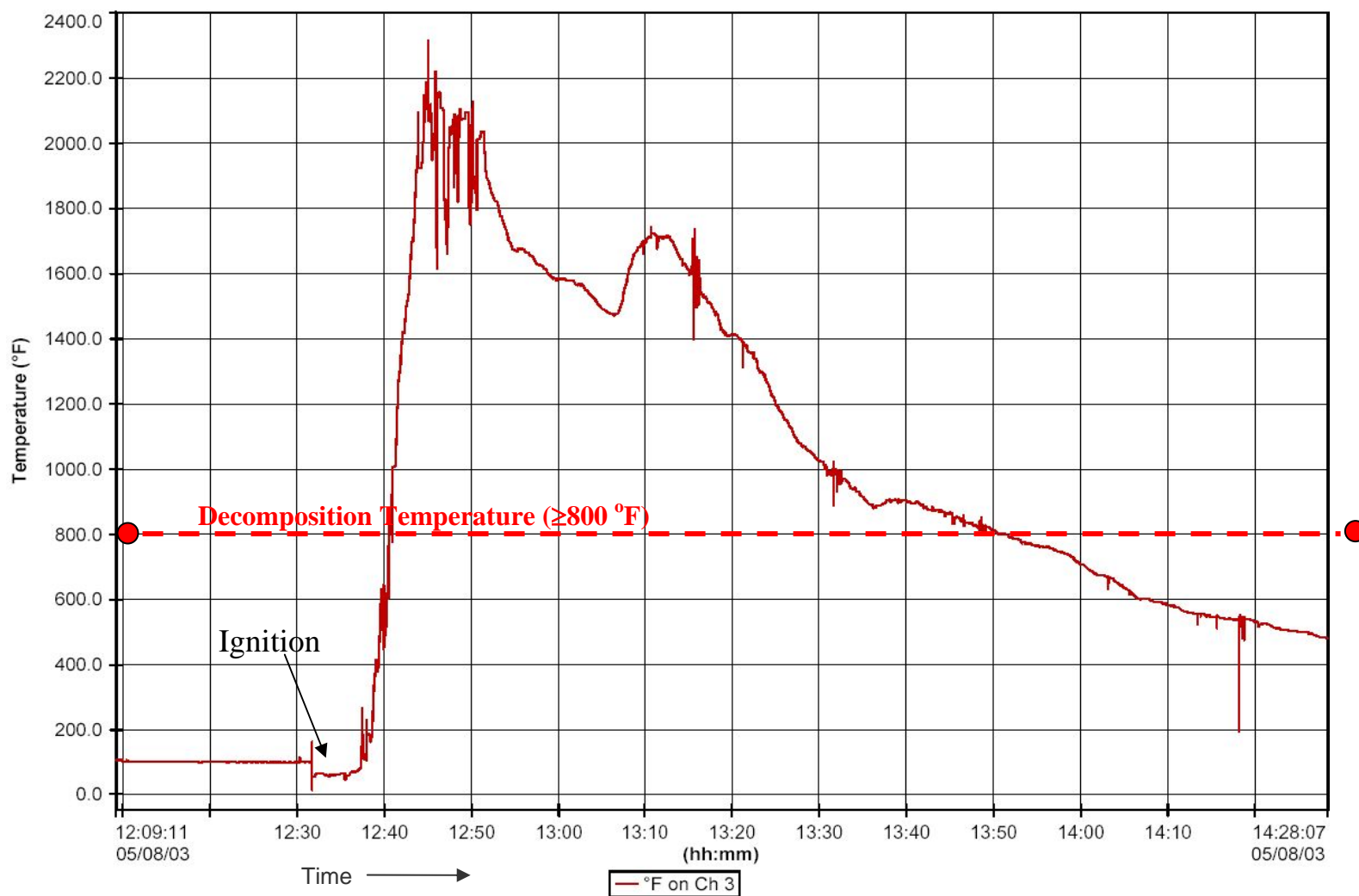
Rationale for Placing Thermocouple in Bldg. DT-20: Random



Thermal Decomposition and 5X Certification of Load Lines 6, 9 and Wet Storage Igloos 1, 1A, 2, & 2A

Data Logger # 2

Bldg. /Ramp: **DT-22**



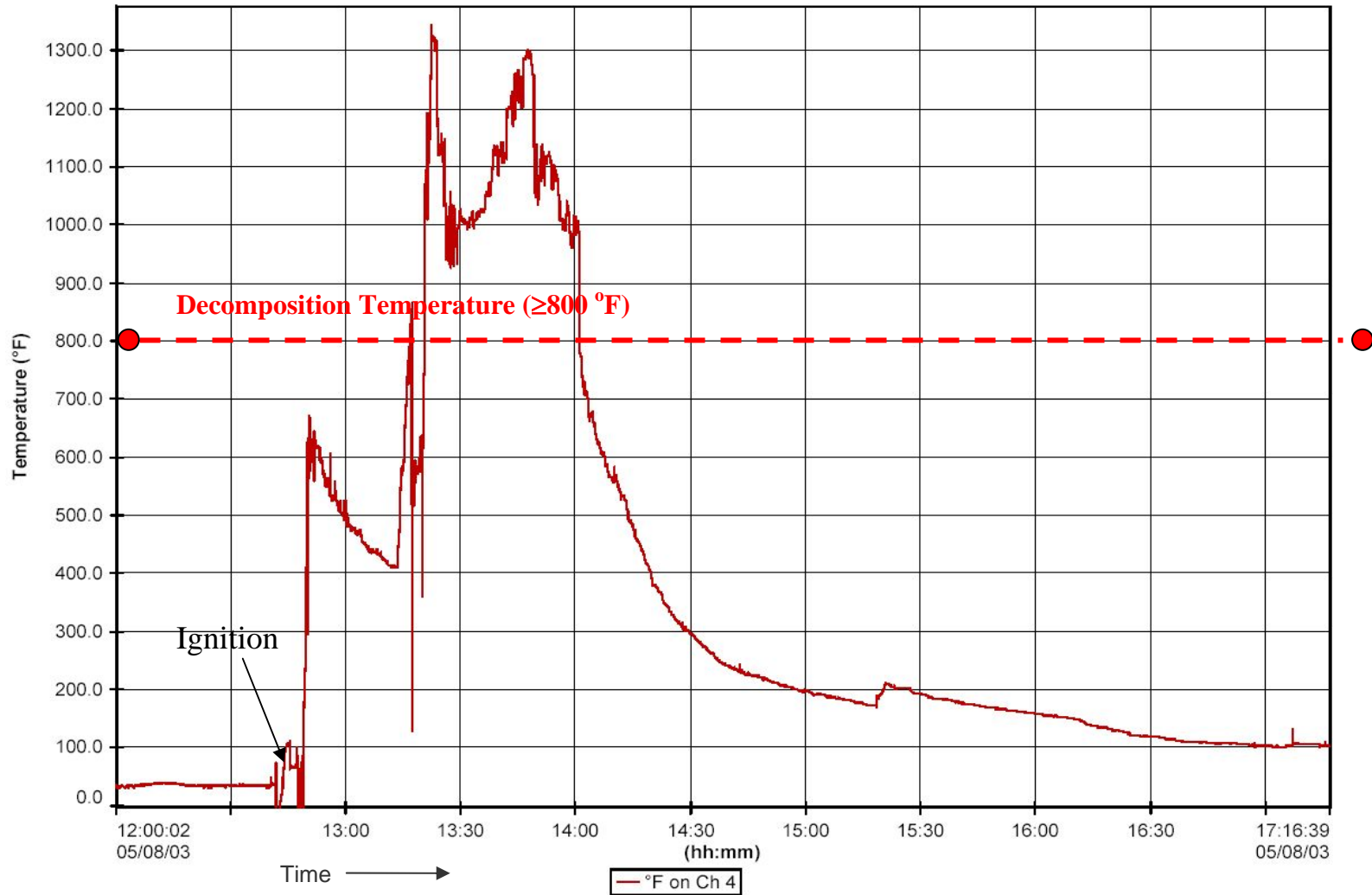
Rationale for Placing Thermocouple in Bldg. DT-22: Random



Thermal Decomposition and 5X Certification of Load Lines 6, 9 and Wet Storage Igloos 1, 1A, 2, & 2A

Data Logger # 2

Bldg. /Ramp: **DT-28**



Rationale for Placing Thermocouple in Bldg. DT-28: Random



Thermal Decomposition and 5X Certification of Load Lines 6, 9 and Wet Storage Igloos 1, 1A, 2, & 2A

LL-9
Temperature Indicating
Pallets/Paint Results



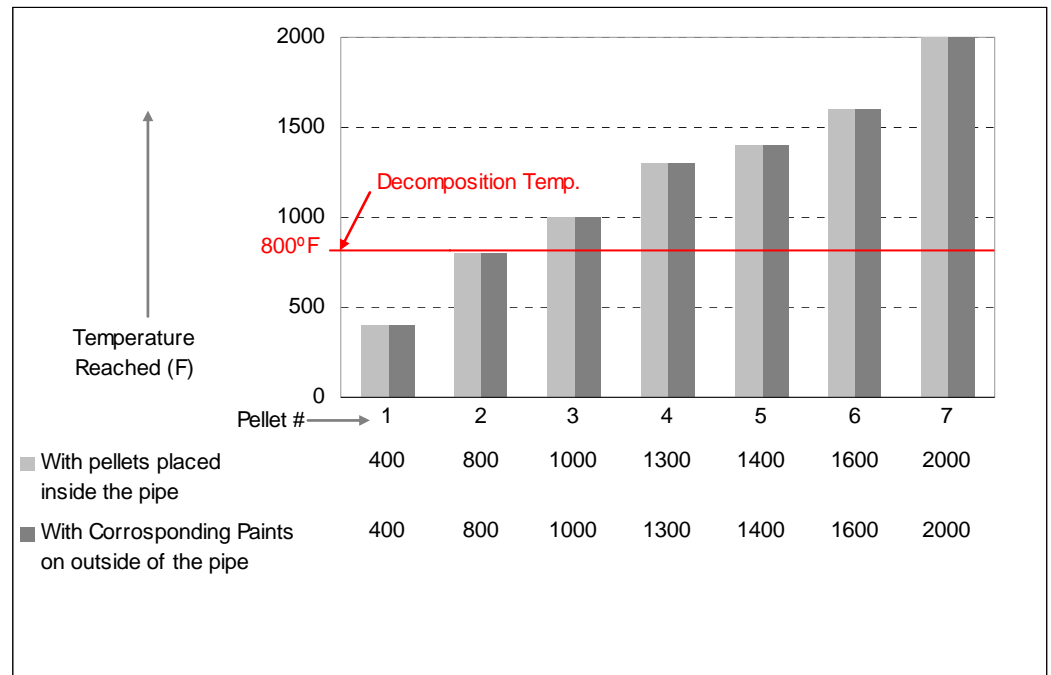
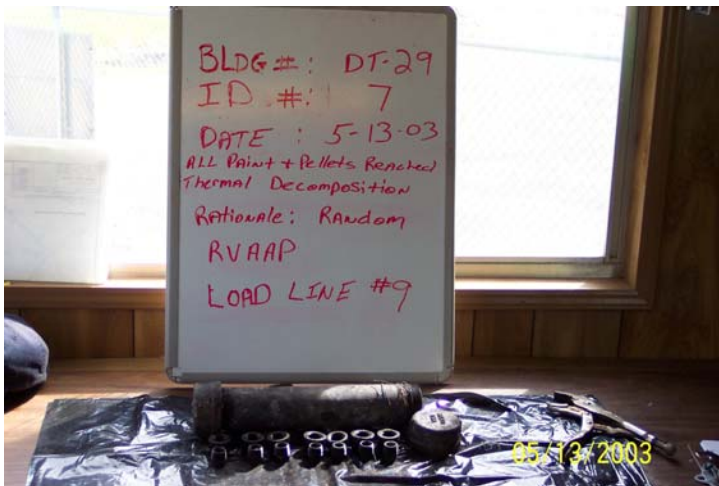
Thermal Decomposition and 5X Certification of Load Lines 6, 9 and Wet Storage Igloos 1, 1A, 2, & 2A

Field ID # 07

Bldg. /Ramp: **DT-29**

Rationale for Placing Indicating Devices: Random

Max. Temperature Reached With Outside Paint: 2000° F
With Inside Pallets: 2000° F





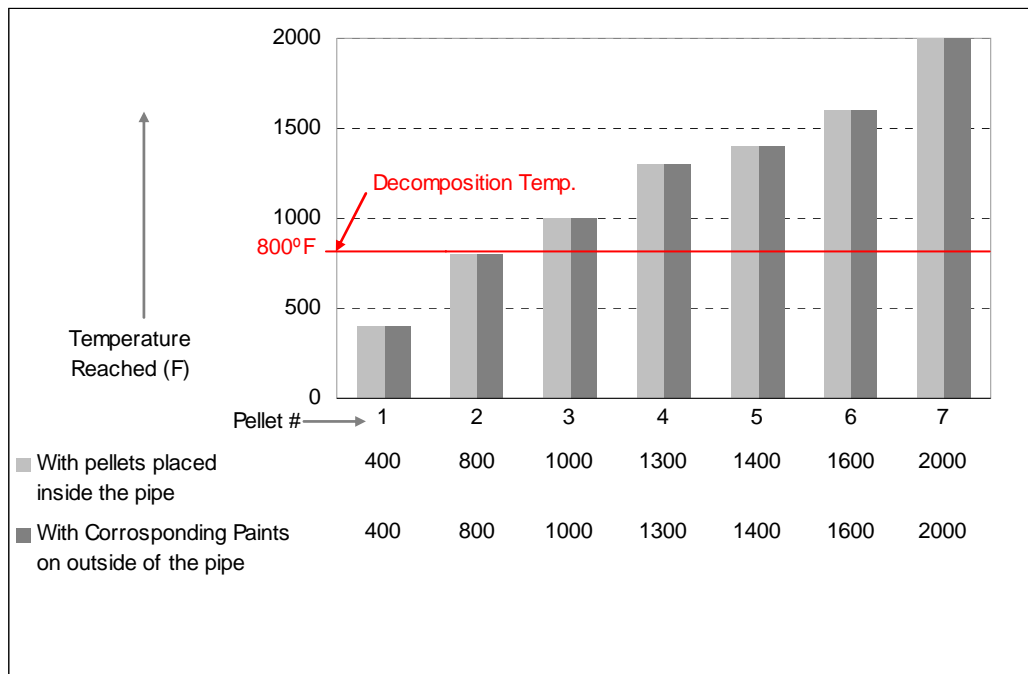
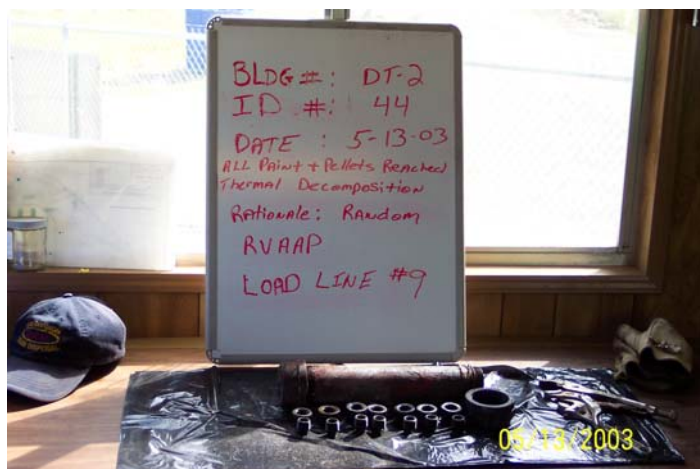
Thermal Decomposition and 5X Certification of Load Lines 6, 9 and Wet Storage Igloos 1, 1A, 2, & 2A

Field ID # 44

Bldg. /Ramp: **DT-2**

Rationale for Placing Indicating Devices: Random

Max. Temperature Reached With Outside Paint: 2000° F
With Inside Pallets: 2000° F





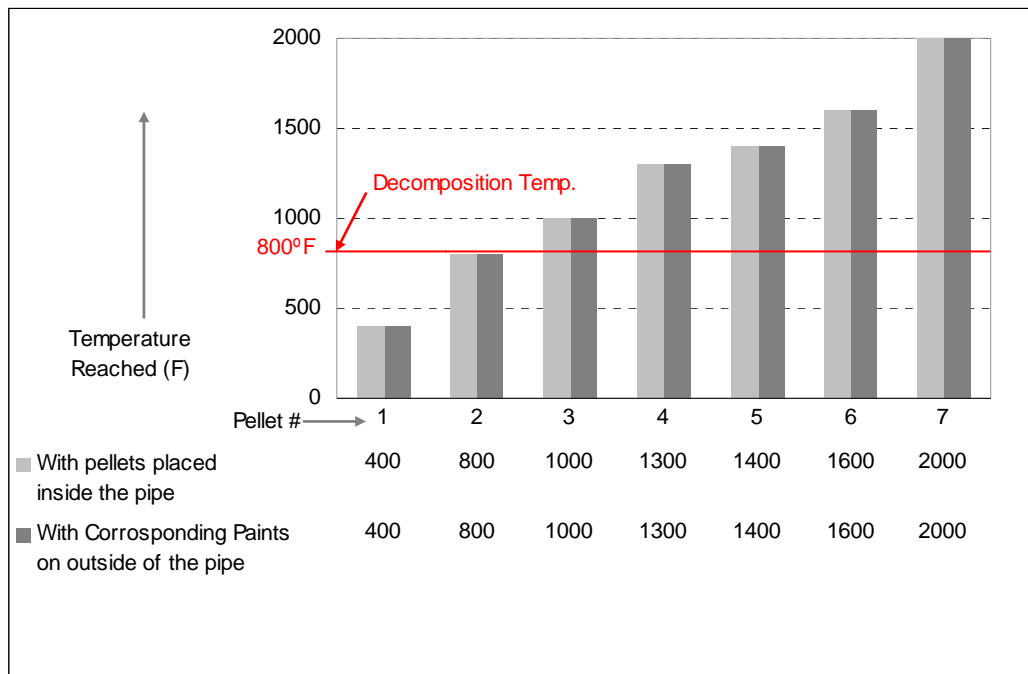
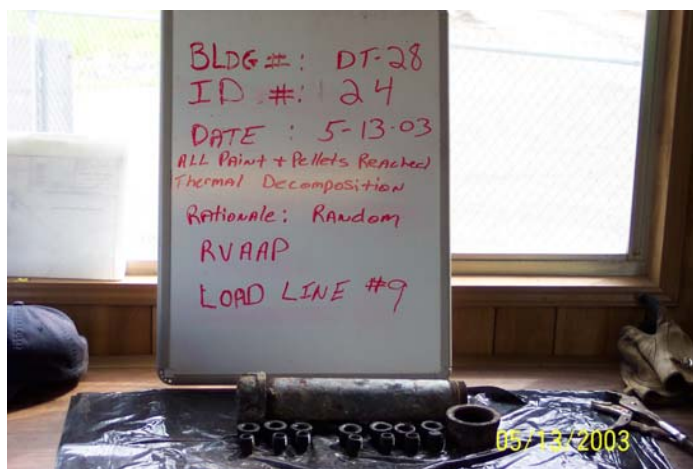
Thermal Decomposition and 5X Certification of Load Lines 6, 9 and Wet Storage Igloos 1, 1A, 2, & 2A

Field ID # 24

Bldg. /Ramp: **DT-28**

Rationale for Placing Indicating Devices: Random

Max. Temperature Reached With Outside Paint: 2000° F
With Inside Pallets: 2000° F





Thermal Decomposition and 5X Certification of Load Lines 6, 9 and Wet Storage Igloos 1, 1A, 2, & 2A

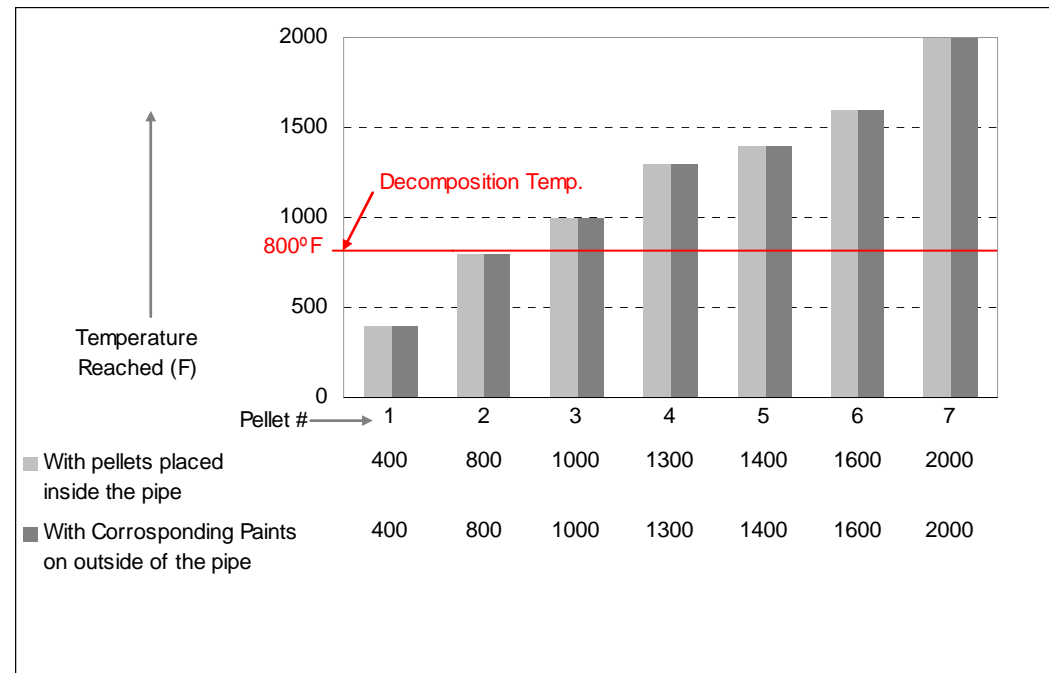
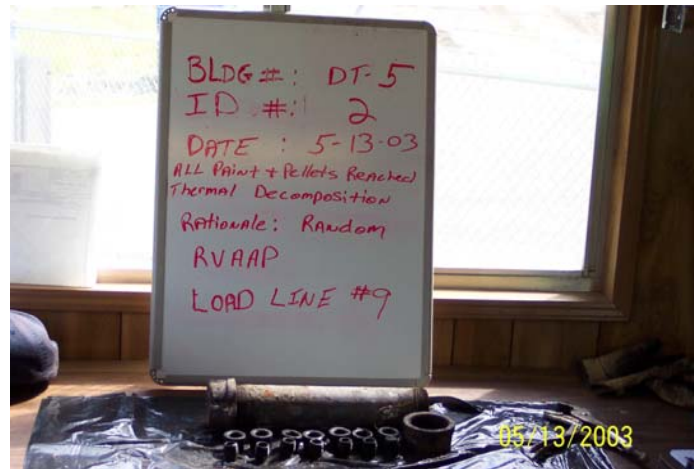
Field ID # 2

Bldg. /Ramp: **DT-5**



Rationale for Placing Indicating Devices: Random

Max. Temperature Reached With Outside Paint: 2000° F
With Inside Pallets: 2000° F





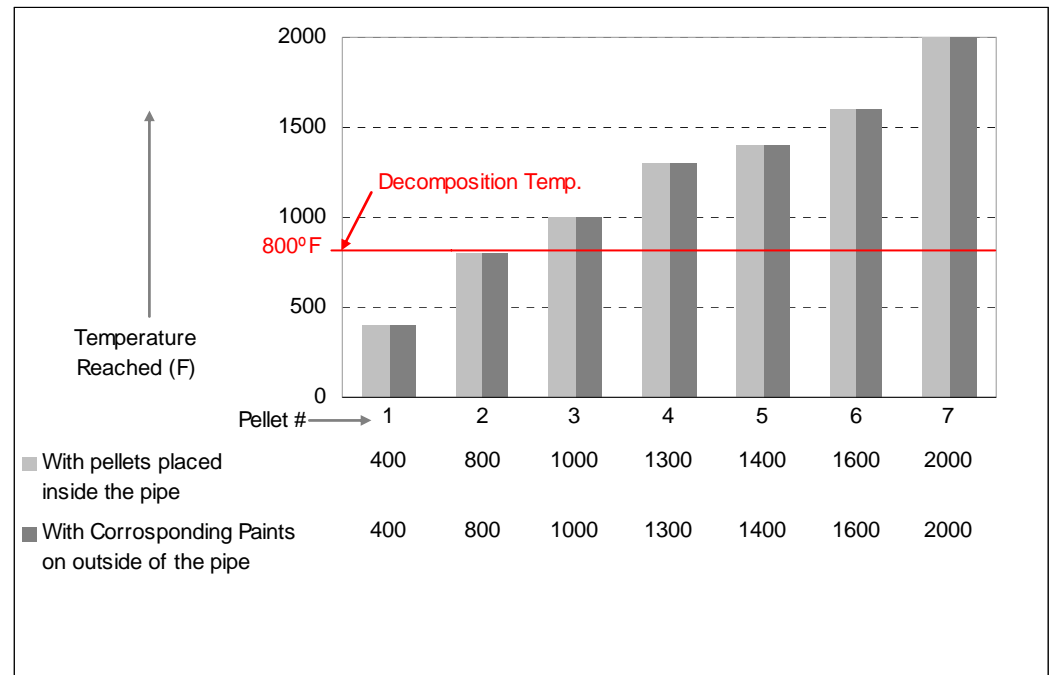
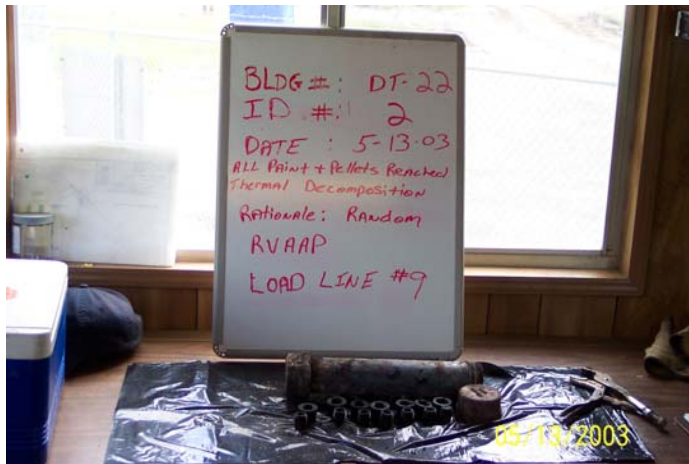
Thermal Decomposition and 5X Certification of Load Lines 6, 9 and Wet Storage Igloos 1, 1A, 2, & 2A

Field ID # 2

Bldg. /Ramp: **DT-22**

Rationale for Placing Indicating Devices: Random

Max. Temperature Reached With Outside Paint: 2000° F
With Inside Pellets: 2000° F

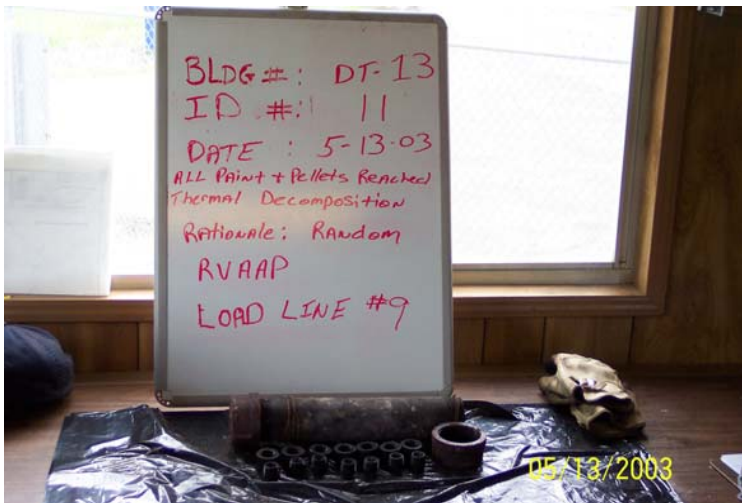




Thermal Decomposition and 5X Certification of Load Lines 6, 9 and Wet Storage Igloos 1, 1A, 2, & 2A

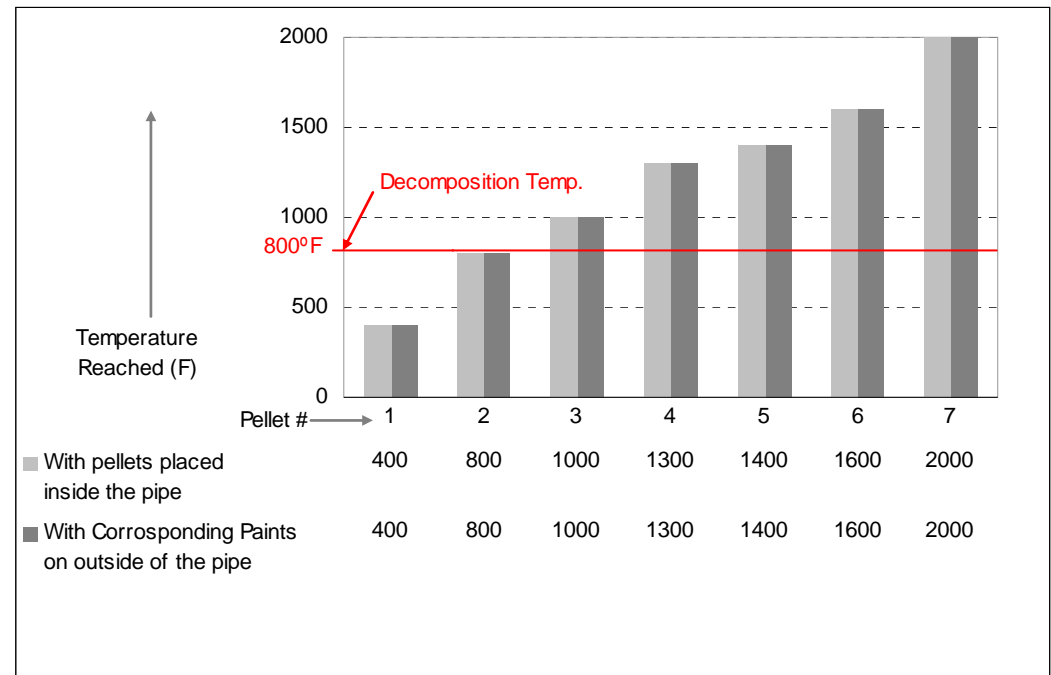
Field ID # 11

Bldg. /Ramp: **DT-13**



Rationale for Placing Indicating Devices: Random

Max. Temperature Reached With Outside Paint: 2000° F
With Inside Pallets: 2000° F

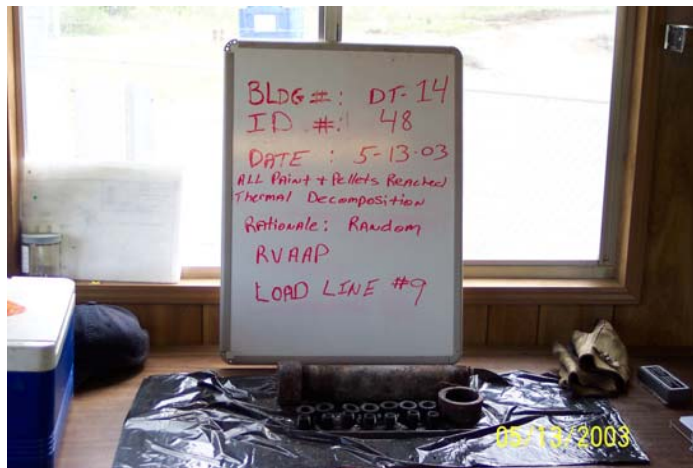
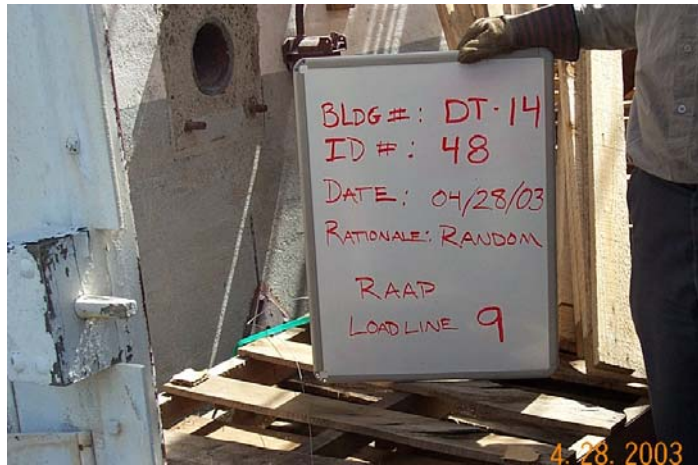




Thermal Decomposition and 5X Certification of Load Lines 6, 9 and Wet Storage Igloos 1, 1A, 2, & 2A

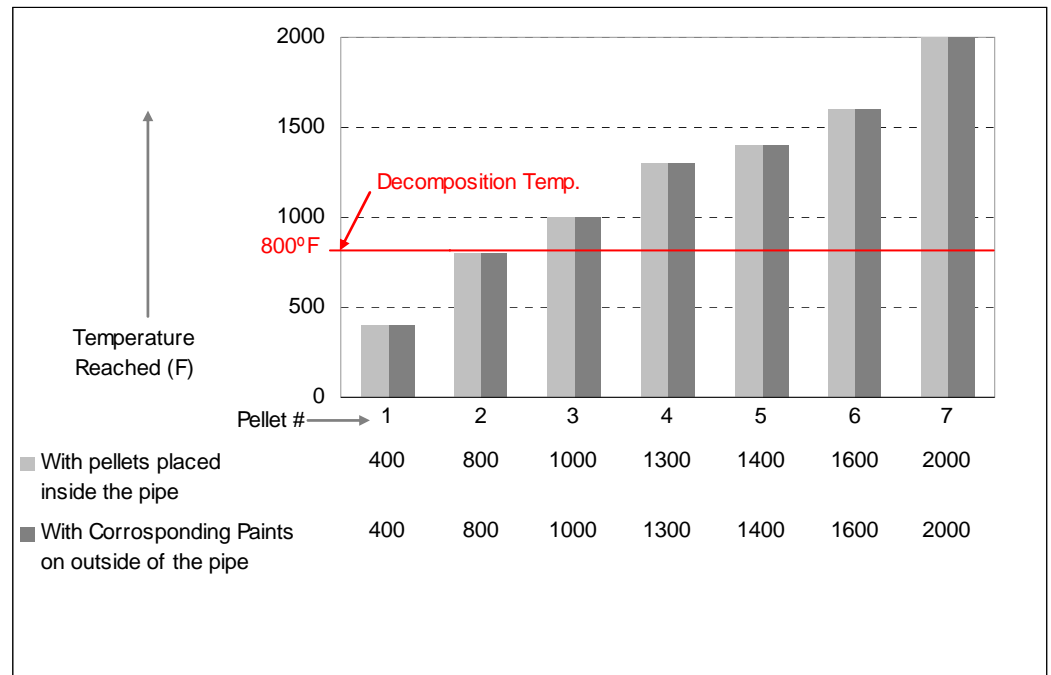
Field ID # 48

Bldg. /Ramp: **DT-14**



Rationale for Placing Indicating Devices: Random

Max. Temperature Reached With Outside Paint: 2000° F
With Inside Pellets: 2000° F





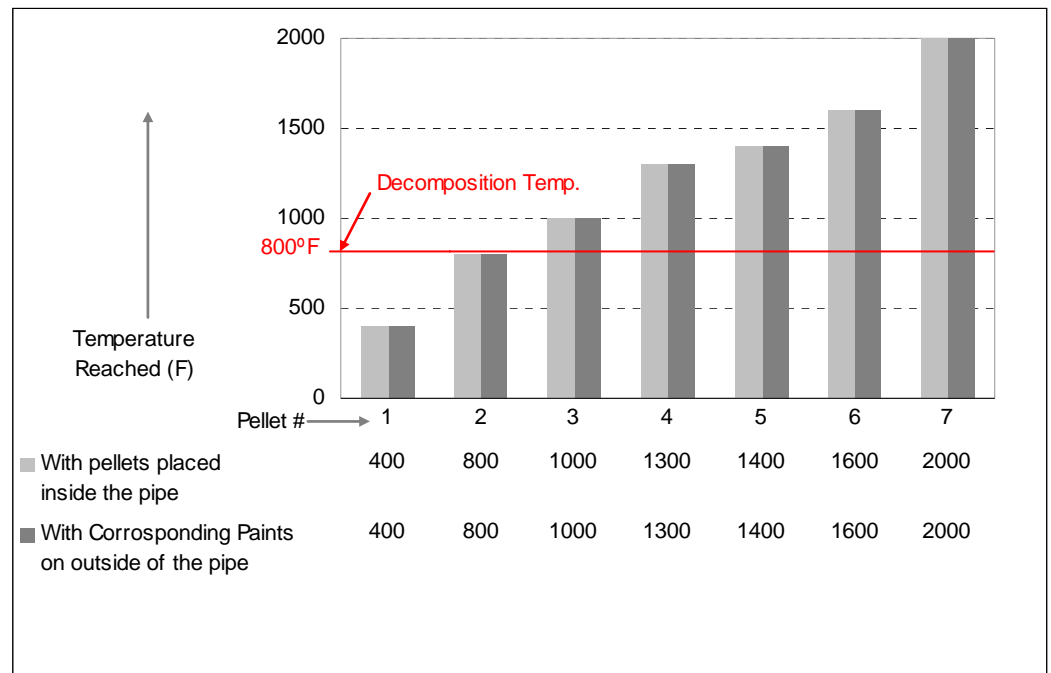
Thermal Decomposition and 5X Certification of Load Lines 6, 9 and Wet Storage Igloos 1, 1A, 2, & 2A

Field ID # 2

Bldg. /Ramp: **DT-16**

Rationale for Placing Indicating Devices: Random

Max. Temperature Reached With Outside Paint: 2000° F
With Inside Pallets: 2000° F





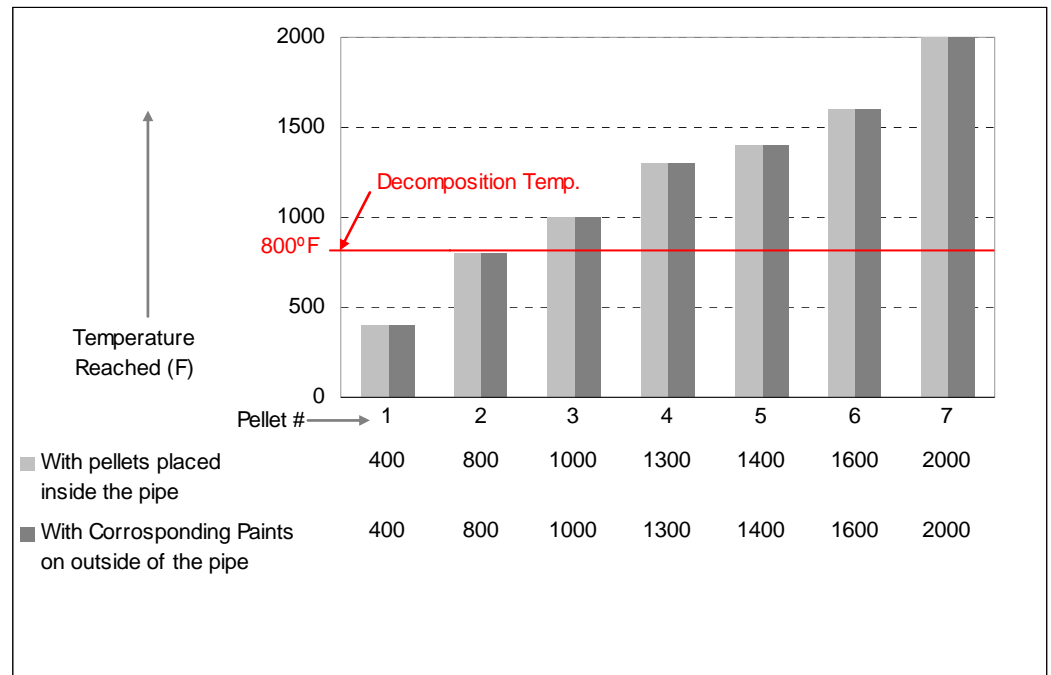
Thermal Decomposition and 5X Certification of Load Lines 6, 9 and Wet Storage Igloos 1, 1A, 2, & 2A

Field ID # 2

Bldg. /Ramp: **DT-20**

Rationale for Placing Indicating Devices: Random

Max. Temperature Reached With Outside Paint: 2000° F
With Inside Pellets: 2000° F





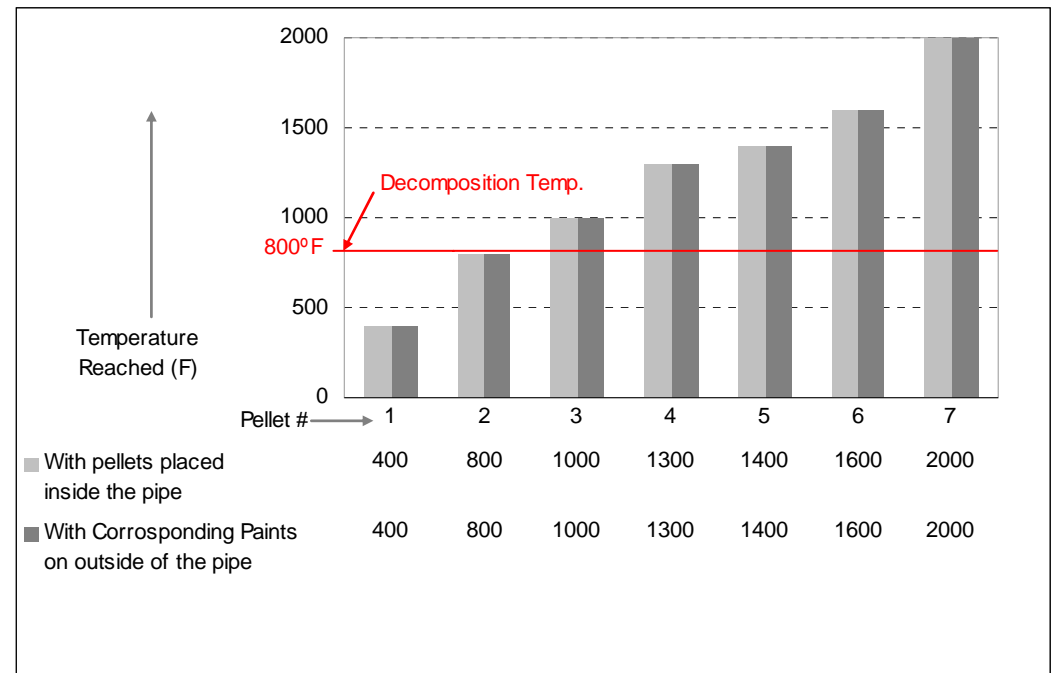
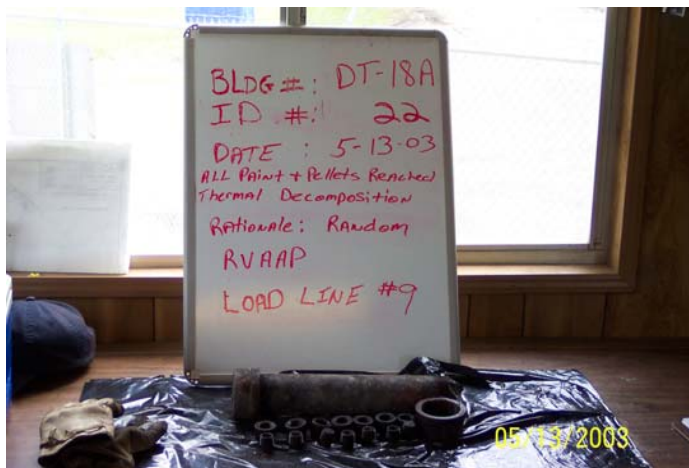
Thermal Decomposition and 5X Certification of Load Lines 6, 9 and Wet Storage Igloos 1, 1A, 2, & 2A

Field ID # 22

Bldg. /Ramp: **DT-18**

Rationale for Placing Indicating Devices: Random

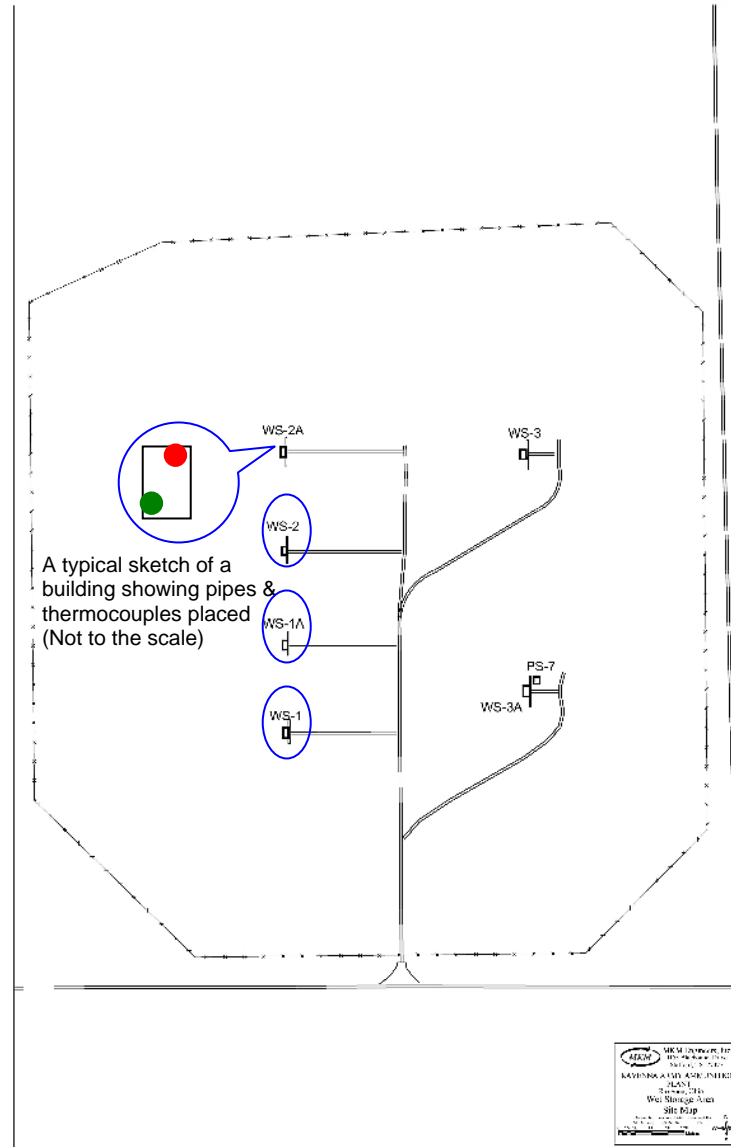
Max. Temperature Reached With Outside Paint: 2000° F
With Inside Pellets: 2000° F





Thermal Decomposition and 5X Certification of Load Lines 6, 9 and Wet Storage Igloos 1, 1A, 2, & 2A

Temperature Monitoring Locations – Wet Storage





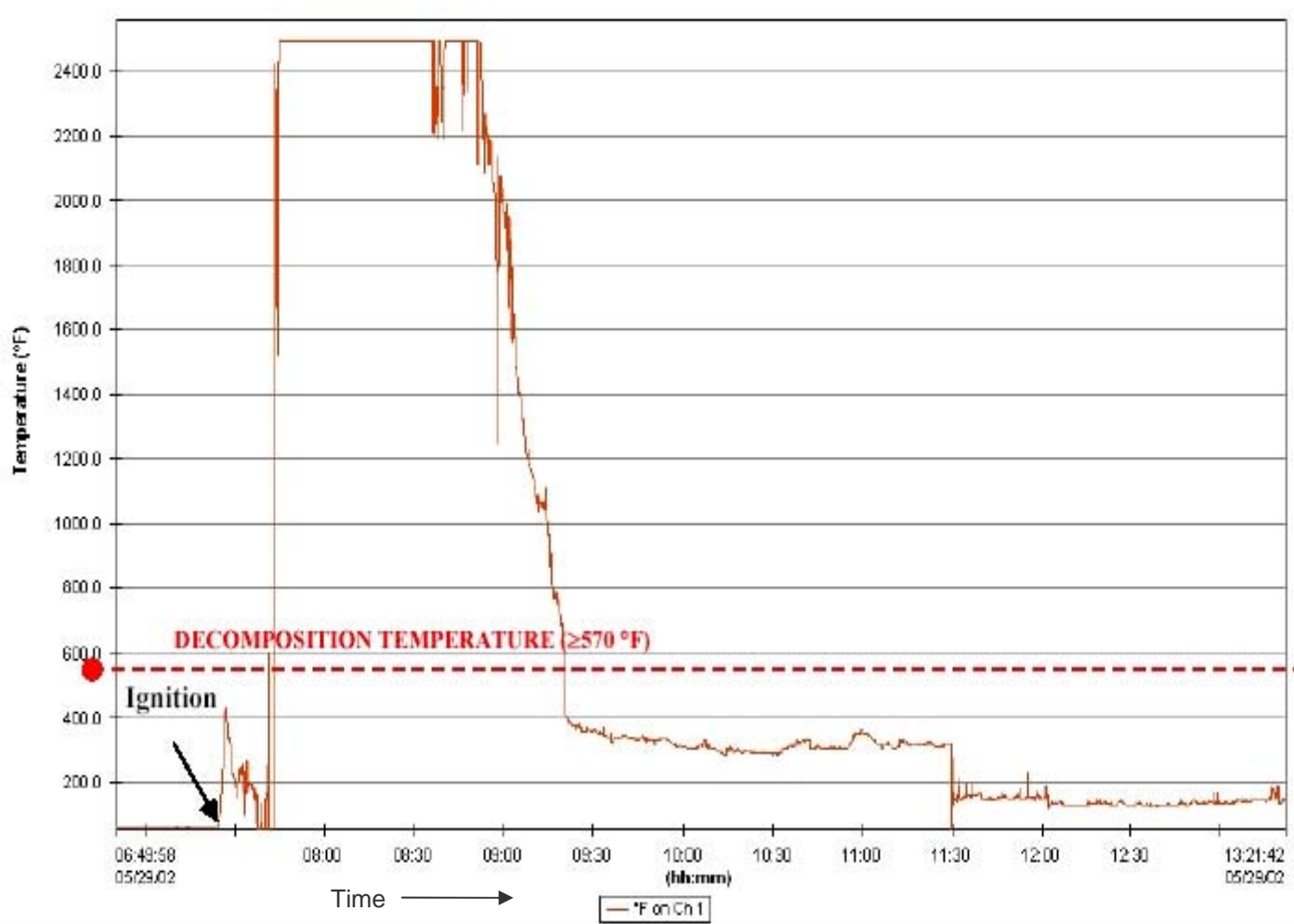
Wet Storage Thermocouple Data Charts



Thermal Decomposition and 5X Certification of Load Lines 6, 9 and Wet Storage Igloos 1, 1A, 2, & 2A

Data Logger # 1

Bldg. /Igloo: WS-1A



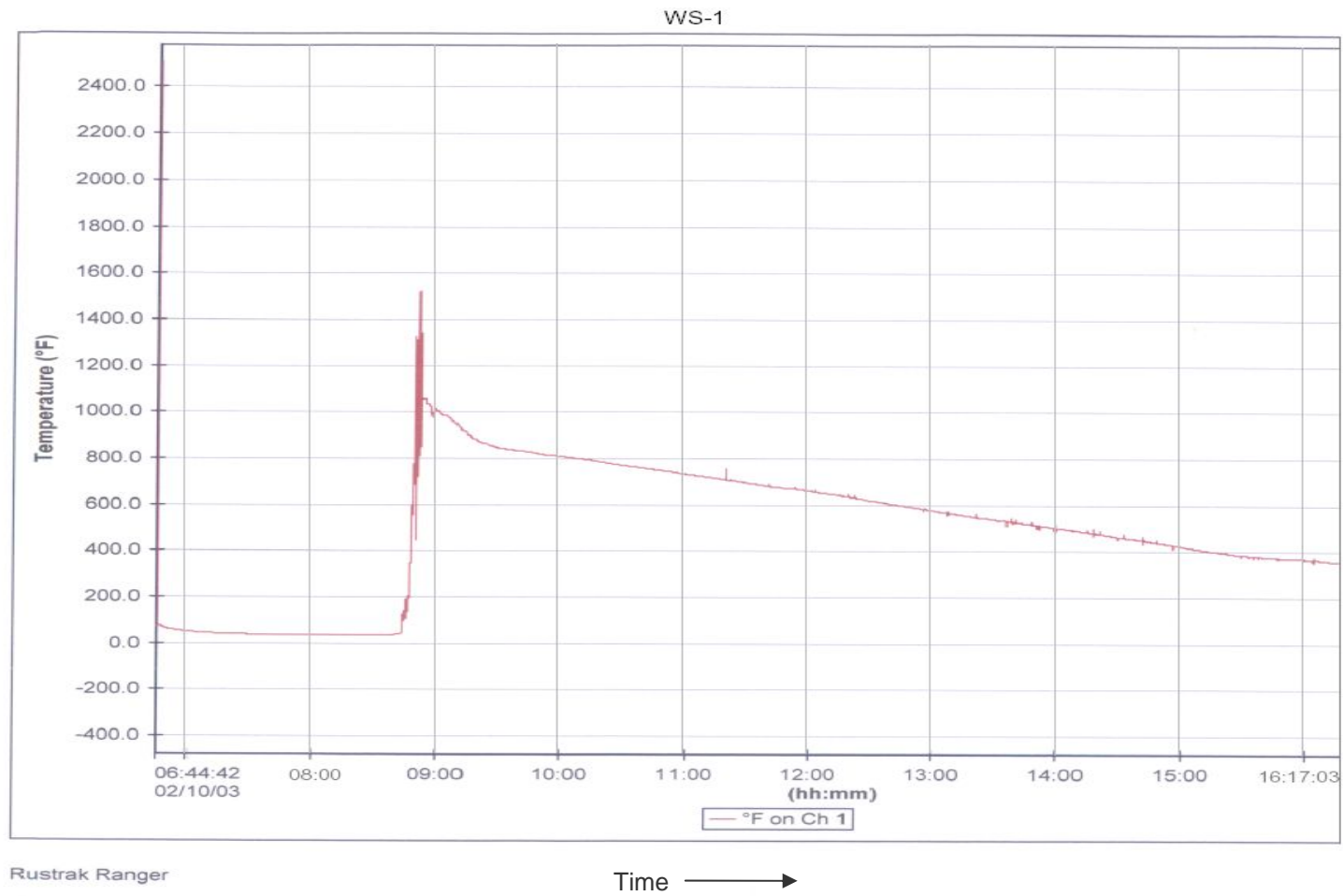
Rationale for Placing Thermocouple in WS-1A: Cracks in the Floor



Thermal Decomposition and 5X Certification of Load Lines 6, 9 and Wet Storage Igloos 1, 1A, 2, & 2A

Data Logger # 1

Bldg. /Igloo: **WS-1**



Rationale for Placing Thermocouple in WS-1: [Cracks in the Floor](#)



Wet Storage Temperature Indicating Pallets/Paint Results

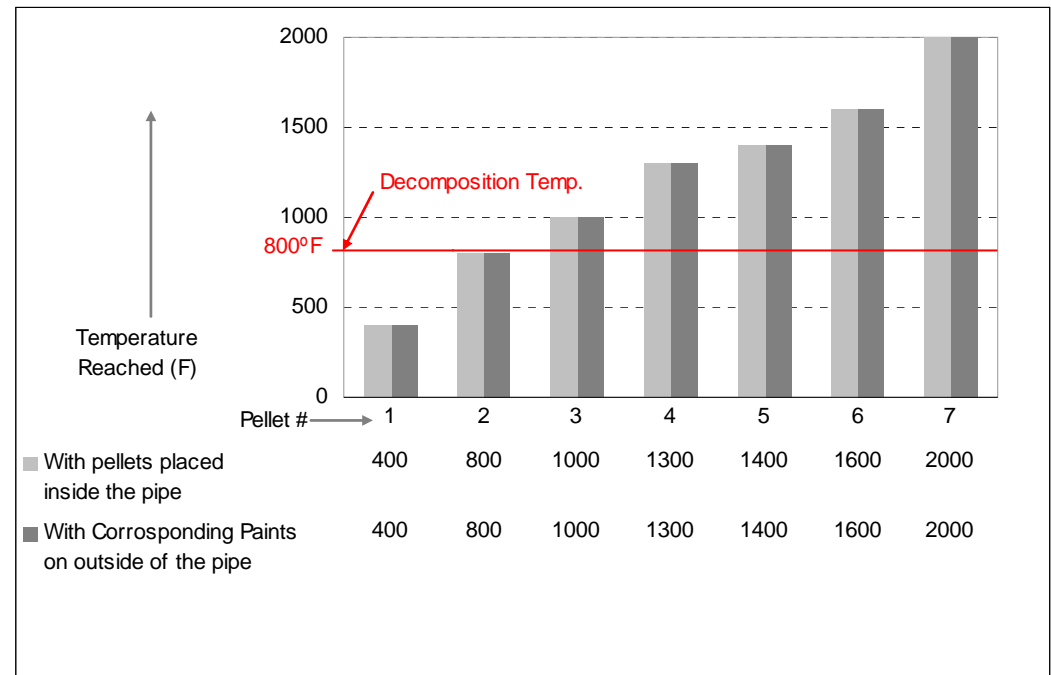


Thermal Decomposition and 5X Certification of Load Lines 6, 9 and Wet Storage Igloos 1, 1A, 2, & 2A

Bldg. /Ramp: **WS-1**

Rationale for Placing Indicating Devices: Random

Max. Temperature Reached With Outside Paint: 2000° F
With Inside Pellets: 2000° F





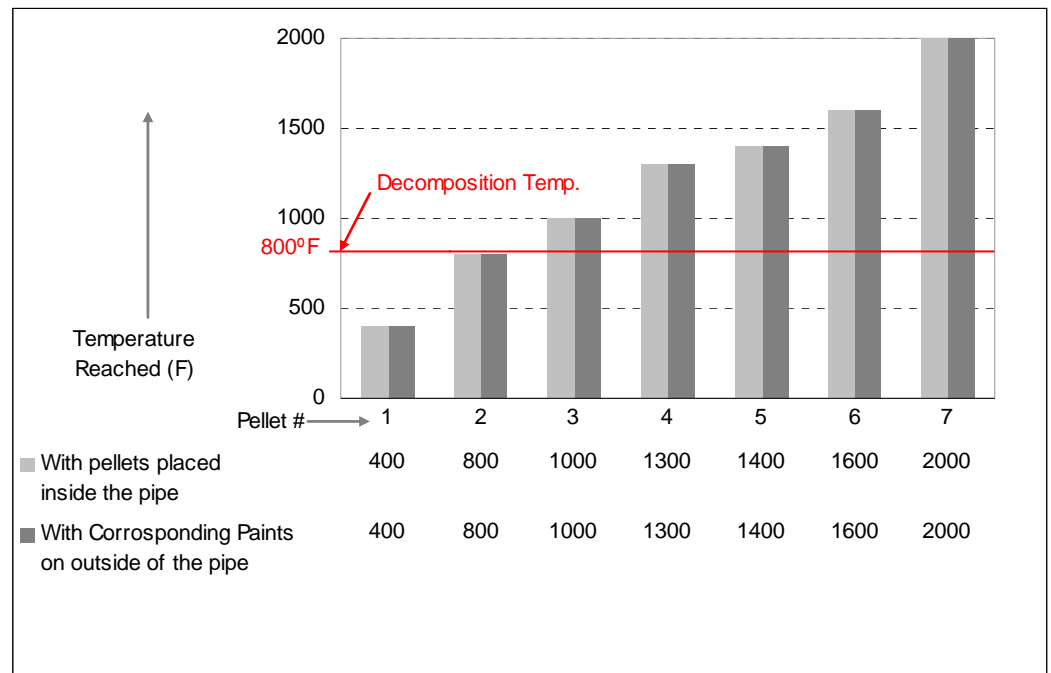
Thermal Decomposition and 5X Certification of Load Lines 6, 9 and Wet Storage Igloos 1, 1A, 2, & 2A

Bldg. /Ramp: **WS-1A**

Rationale for Placing Indicating Devices: Random



Max. Temperature Reached With Outside Paint: 2000° F
With Inside Pellets: 2000° F



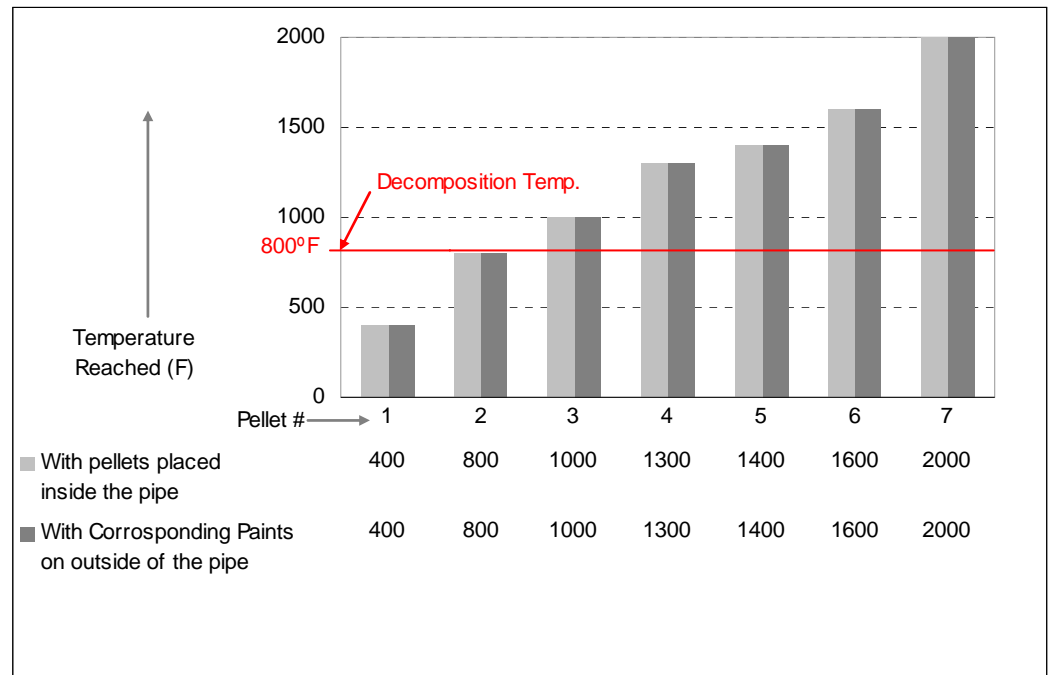


Thermal Decomposition and 5X Certification of Load Lines 6, 9 and Wet Storage Igloos 1, 1A, 2, & 2A

Bldg. /Ramp: **WS-2**

Rationale for Placing Indicating Devices: Random

Max. Temperature Reached With Outside Paint: 2000° F
With Inside Pallets: 2000° F





Thermal Decomposition and 5X Certification of Load Lines 6, 9 and Wet Storage Igloos 1, 1A, 2, & 2A

Bldg. /Ramp: **WS-2A**

Rationale for Placing Indicating Devices: Random



Max. Temperature Reached With Outside Paint: 2000° F
With Inside Pallets: 2000° F

No Picture Available

